

Product datasheet for **AM26032SU-N**

pan Actin (pan alpha / gamma 2) Mouse Monoclonal Antibody [Clone ID: HHF35]

Product data:

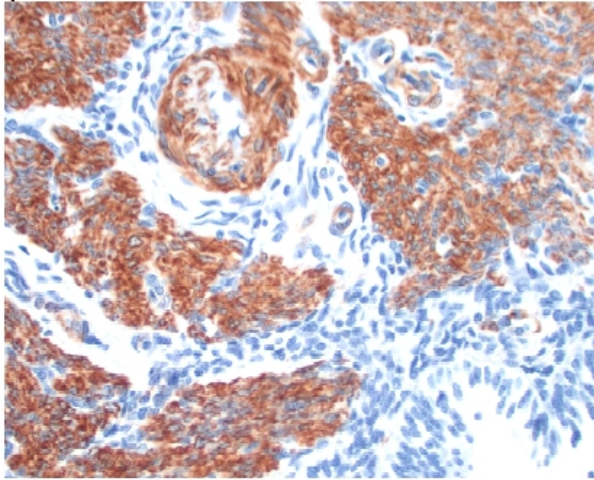
| | |
|-----------------------|--|
| Product Type: | Primary Antibodies |
| Clone Name: | HHF35 |
| Applications: | IHC, WB |
| Recommended Dilution: | Western Blot. Immunohistochemistry on Frozen Sections. Immunohistochemistry on Formalin-Fixed, Paraffin-Embedded Sections: 1/100 Pretreatment of deparaffinized tissue with heat-induced epitope retrieval is recommended. Use Polymer anti Mouse/Rabbit IgG as a detection system. <i>Positive Control:</i> Skeletal muscle. |
| Reactivity: | Canine, Chicken, Feline, Human, Mouse, Primate, Rabbit, Rat |
| Host: | Mouse |
| Isotype: | IgG1 |
| Clonality: | Monoclonal |
| Immunogen: | SDS extract of Human myocardium. |
| Specificity: | This antibody reacts with Actin from tissue extracts of uterus, ileum, aorta, diaphragm, heart, and smooth muscle cells. It recognizes the alpha Actin from skeletal, cardiac, and smooth muscle and the gamma Actin from smooth muscle sources. It stains tumors of smooth muscle (leiomyomas and leiomyosarcomas) as well as skeletal muscle (rhabdomyomas and rhabdomyosarcomas). Cellular Localization: Cytoplasmic. |
| Formulation: | State: Supernatant State: Liquid Tissue Culture Supernatant with 0.2% BSA and 15mM Sodium Azide. |
| Conjugation: | Unconjugated |
| Storage: | Store the antibody undiluted at 2-8°C. |
| Stability: | Shelf life: one year from despatch. |



[View online »](#)

Background:

Actin is a highly conserved ubiquitous globular protein (G-actin) that polymerizes to form fibrous F-actin microfilaments. In higher eucaryotes several actin isoforms have been identified, that fall into three classes. Alpha actin is a structural component of the contractile apparatus of muscle cells or muscle-derived cells. Beta actin and gamma actin play roles in regulation of cell motility in other cell types. Specific subcellular structures such as stress fibers, focal adhesions, filopodia etc., are formed by involvement of actin cytoskeleton.

Product images:

Formalin-Fixed, Paraffin-Embedded Human uterus stained with Actin antibody Cat.-No. AM26032SU-N using peroxidase conjugate and DAB chromogen. Note the cytoplasmic staining of smooth muscle fibers.