

Product datasheet for **AM26025HR-N**

Human IgG (Fc heavy chain specific) Mouse Monoclonal Antibody [Clone ID: EM-07]

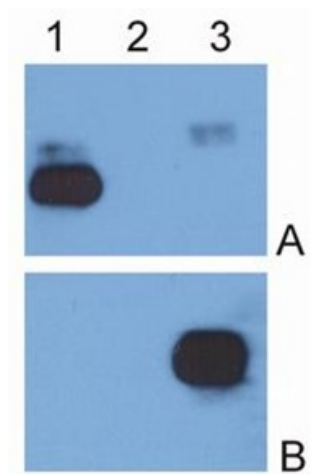
Product data:

Product Type:	Secondary Antibodies
Product Name:	Human IgG (Fc heavy chain specific) Mouse Monoclonal Antibody [Clone ID: EM-07]
Clone Name:	EM-07
Applications:	ELISA, WB
Recommended Dilution:	ELISA: 0.1-0.5 µg/ml. Western blot.
Reactivity:	Human
Host:	Mouse
Immunogen:	Fusion protein of Human IgG Fc fragment
Isotype:	IgG1
Formulation:	PBS Label: HRP State: Liquid purified IgG fraction Stabilizer: 1% (w/v) high-grade BSA (Protease free) Preservative: 0.01% (w/v) Thimerosal Label: Conjugated with Horseradish Peroxidase of high specific activity and RZ=3
Concentration:	lot specific
Conjugation:	HRP
Storage:	Store undiluted at 2-8°C. DO NOT FREEZE! This product is photosensitive and should be protected from light.



[View online »](#)

Product images:



IgG κ light chain (1), IgG λ light chain (2) and IgG Fc fragment (3) purified from human serum were analysed by Western blotting with MEM-09 antibody against IgG κ light chain (A) and EM-07 antibody against IgG Fc fragment (B).