

Product datasheet for **AM26021PU-N**

BRG1 (SMARCA4) (C-term) Mouse Monoclonal Antibody [Clone ID: BRG-01]

Product data:

Product Type:	Primary Antibodies
Clone Name:	BRG-01
Applications:	IHC, WB
Recommended Dilution:	Western blot: 10 µg/ml <i>Positive control:</i> HEK293 cells. This clone has been described to work in Immunohistochemistry on Paraffin Sections .
Reactivity:	Human
Host:	Mouse
Isotype:	IgG2a
Clonality:	Monoclonal
Immunogen:	Bacterially produced GST-fused protein representing 242 C-terminal amino acids of human Brg1
Specificity:	The antibody <i>BRG-01</i> recognizes an epitope within C-terminal part of Human Brg1, a 205 kDa catalytic subunit of SWI2/SNF2-family chromatin-remodeling complexes.
Formulation:	PBS, pH~7.4 State: Aff - Purified State: Liquid purified Ig fraction (> 95% pure by SDS-PAGE) Preservative: 15 mM Sodium Azide
Concentration:	lot specific
Purification:	Affinity Chromatography on Protein A
Conjugation:	Unconjugated
Storage:	Store undiluted at 2-8°C for one month or (in aliquots) at -20°C for longer. Avoid repeated freezing and thawing.
Stability:	Shelf life: one year from despatch.
Gene Name:	SWI/SNF related, matrix associated, actin dependent regulator of chromatin, subfamily a, member 4
Database Link:	Entrez Gene 6597 Human P51532



[View online »](#)

Background:

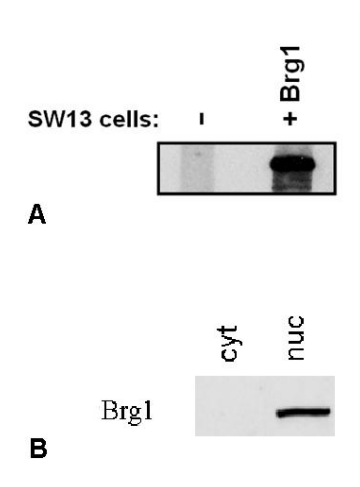
Brg1 (Brahma-related gene 1) is an ATPase subunit of SWI2/SNF2-like chromatin-remodeling complexes that enable access of regulatory and effector proteins in transcription, DNA repair and DNA replication. Although Brg1-containing complexes are not essential for general cell survival, they participate in transcriptional regulation of several hundred genes including those involved in interferon and stress response, immune cells differentiation, neurogenesis, cell cycle etc. and is absolutely necessary for mouse embryogenesis. Brg1 is also involved in cell growth arrest, senescence and tumour suppression.

Synonyms:

SNF2B, SNF2L4, SNF2-beta, BRG-1 protein, Brahma protein homolog 1

Protein Families:

Druggable Genome, Transcription Factors

Product images:

Immunostaining of Brg1 by BRG-01 antibody. A - Brg1-negative SW13 cells were transfected with Brg1-expression plasmid and analysed by Western blotting for Brg1 expression. B - HEK293 cytoplasmic (cyt) and nuclear (nuc) lysates were analysed by Western blotting for Brg1 presence.