

Product datasheet for **AM26005AC-N**

CD36 Mouse Monoclonal Antibody [Clone ID: CB38 (NL07)]

Product data:

| | |
|-----------------------|--|
| Product Type: | Primary Antibodies |
| Clone Name: | CB38 (NL07) |
| Applications: | FC |
| Recommended Dilution: | Flow cytometry: 10 µl reagent / 100 µl of whole blood or 10 ⁶ cells in a suspension. The content of a vial (1 ml) is sufficient for 100 tests. |
| Reactivity: | Human |
| Host: | Mouse |
| Isotype: | IgM |
| Clonality: | Monoclonal |
| Immunogen: | Living human myeloid cells |
| Specificity: | This antibody detects human CD36. |
| Formulation: | PBS Label: APC State: Liquid purified Ig fraction Stabilizer: 0.2% (w/v) high-grade protease free Bovine Serum Albumin (BSA) Preservative: 15 mM sodium azide Label: Conjugated with cross-linked Allophycocyanin (APC) under optimum conditions. The conjugate is purified by size-exclusion chromatography and adjusted for direct use. |
| Conjugation: | APC |
| Storage: | Store undiluted at 2-8°C. DO NOT FREEZE! This products is photosensitive and should be protected from light. |
| Stability: | Shelf life: one year from despatch. |
| Gene Name: | CD36 molecule |
| Database Link: | Entrez Gene 948 Human P16671 |



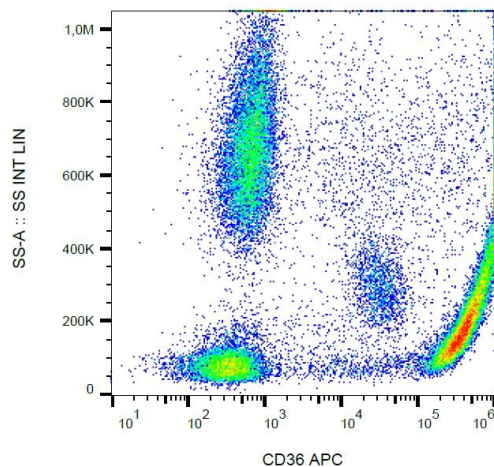
[View online »](#)

Background:

CD36 (fatty acid translocase, FAT) is an 85-113 kDa ditopic glycosylated protein that belongs to the class B family of scavenger receptors. CD36 is expressed by most resting marginal zone B cells but not by follicular and B1 B cells, and it is rapidly induced on Follicular B cells in vitro upon TLR and CD40 stimulation. CD36 does not affect the development of B cells, but modulates both primary and secondary antibody response. Similarly to glucose transporter GLUT4, CD36 is translocated from intracellular pools to the plasma membrane following cell stimulation by insulin. In mouse, CD36 is responsible for gustatory perception of long-chain fatty acids.

Synonyms:

Glycoprotein IIIb, PAS IV, PAS-4, Thrombospondin receptor, GP3B, GP4

Product images:

Surface staining of CD36 in human peripheral blood with anti-CD36 (CB38) APC.