

Product datasheet for **AM21055PU-N**

Estrogen Receptor 1 (ESR1) (B region) Mouse Monoclonal Antibody [Clone ID: ER-B10]

Product data:

Product Type:	Primary Antibodies
Clone Name:	ER-B10
Applications:	IHC
Recommended Dilution:	Immunohistochemistry on Frozen Sections: 1/400. Immunohistochemistry on Paraffin Sections: 1/100. Microwave pretreatment for antigen retrieval is recommended. Suggested Positive Control: Human uterus or brain (hypothalamus) sections, Estrogen receptors are widely expressed in different tissue types.
Reactivity:	Human
Host:	Mouse
Isotype:	IgM
Clonality:	Monoclonal
Immunogen:	Peptide R151 to L165 from Human ER-alpha. The antigen is Estrogen Receptor alpha epitope is located in the B region.
Specificity:	This Monoclonal antibody <i>ER-B10</i> recognizes an epitope in the B region of the Human Estrogen Receptor alpha. Does not react with Chicken Tissue. Antigen Distribution: The antigen has been described in endometrium, breast cancer cells, ovarian stroma cells, and the hypothalamus. In males, ER-alpha protein is found in the epithelium of the efferent ducts.
Formulation:	State: Ascites State: Liquid Undiluted Ascites Preservative: 0.01% Kathon as a preservative
Conjugation:	Unconjugated
Storage:	Store undiluted at 2-8°C for one month or (in aliquots) at -20°C for longer. Avoid repeated freezing and thawing.
Stability:	Shelf life: one year from despatch.
Gene Name:	estrogen receptor 1



[View online »](#)

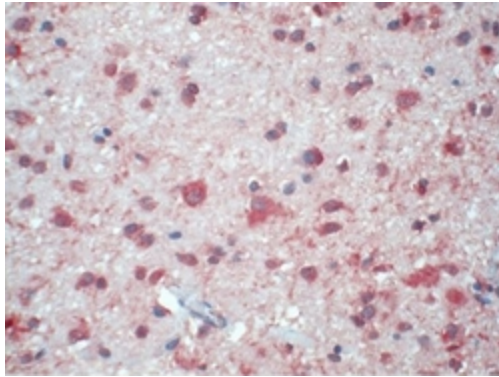
Database Link: [Entrez Gene 2099 Human P03372](#)

Background: The two different forms of the estrogen receptor, usually referred to as α and β , can form hormone-activated dimers, and, since the two forms are coexpressed in many cell types, the receptors may form ER α ($\alpha\alpha$) or ER β ($\beta\beta$) homodimers or ER $\alpha\beta$ ($\alpha\beta$) heterodimers. Estrogen receptor alpha and beta show significant overall sequence homology, and both are composed of five domains (A-F domains listed from the N- to C-terminus).

Synonyms: ER alpha, Estradiol receptor, ESR1, ESR, NR3A1

Protein Families: Druggable Genome, Nuclear Hormone Receptor, Transcription Factors

Product images:



AM21055PU-N Estrogen receptor alpha antibody staining of Paraffin Human Hypothalamus Section (Clone ER-B10).