

Product datasheet for **AM21026PU-N**

TUBA3D Mouse Monoclonal Antibody [Clone ID: 3F10-2F2]

Product data:

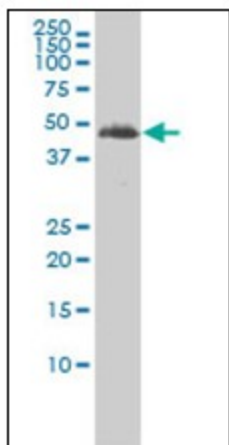
Product Type:	Primary Antibodies
Clone Name:	3F10-2F2
Applications:	ELISA, IF, IHC, WB
Recommended Dilution:	ELISA. Immunofluorescence: 10 µg/ml. Immunohistochemistry on Paraffin Sections: 5 µg/ml. Western Blot.
Reactivity:	Human
Host:	Mouse
Isotype:	IgG1
Clonality:	Monoclonal
Immunogen:	Recombinant protein, TUBA2 (AAH11721, 1 a.a. ~ 419 a.a) full length recombinant protein with GST tag. MW of the GST tag alone is 26 KDa.
Specificity:	This antibody reacts to Tubulin, Alpha 3c/3d (TUBA3C).
Formulation:	PBS, pH 7.2 State: Liquid purified Ig fraction
Concentration:	lot specific
Purification:	Protein A Chromatography
Conjugation:	Unconjugated
Storage:	Store the antibody at -20°C. Avoid repeated freezing and thawing.
Stability:	Shelf life: one year from despatch.
Gene Name:	tubulin alpha 3d
Database Link:	Entrez Gene 7278 Human Entrez Gene 113457 Human Q13748
Synonyms:	TUBA3D, Tubulin alpha-3C/D chain, Alpha-tubulin 3C/D, Tubulin alpha-2 chain, Alpha-tubulin 2
Protein Families:	Druggable Genome, Stem cell - Pluripotency



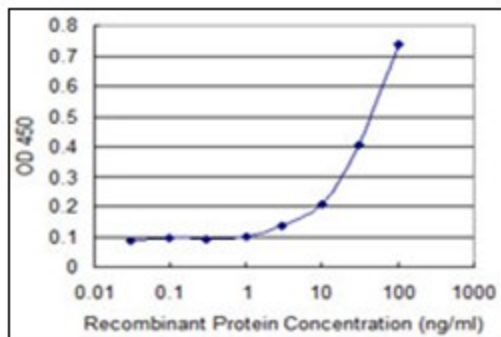
[View online »](#)

Protein Pathways: Gap junction, Pathogenic Escherichia coli infection

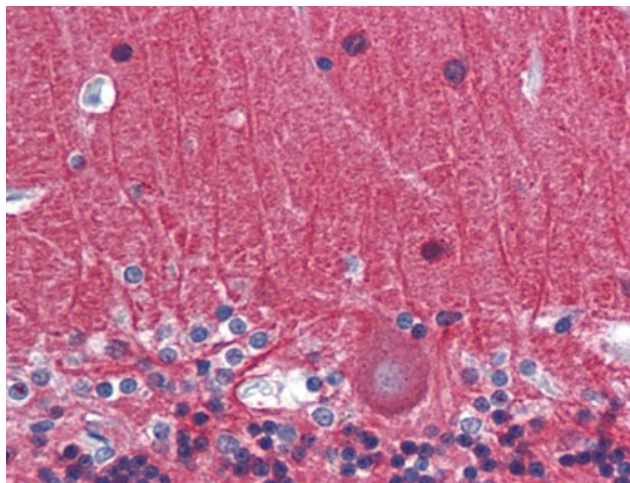
Product images:



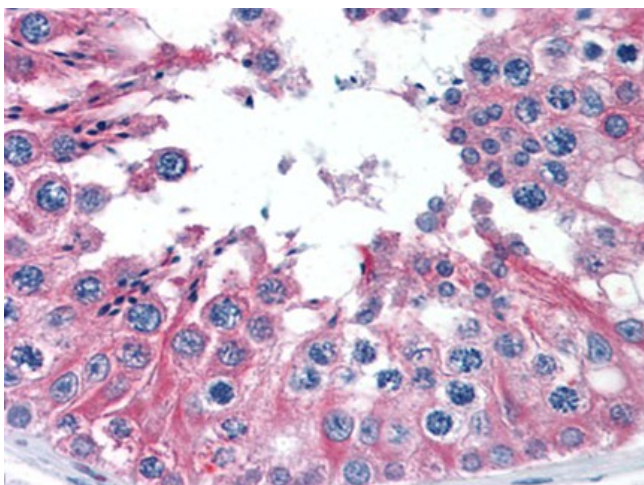
TUBA3C/3D monoclonal antibody, clone 3F10-2F2
Western Blot analysis of TUBA2 expression in Jurkat.



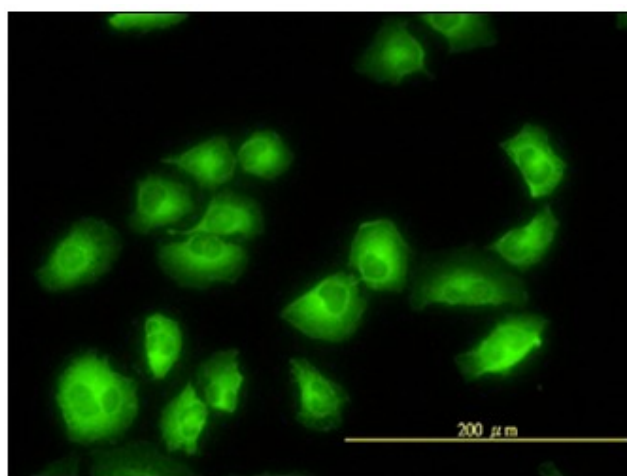
Detection limit for recombinant GST tagged TUBA2 is approximately 0.03 ng/ml as a capture antibody.



Human Brain, Cerebellum: Formalin-Fixed, Paraffin-Embedded (FFPE)



Human Testis: Formalin-Fixed, Paraffin-Embedded (FFPE)



Immunofluorescence of monoclonal antibody to TUBA2 on HeLa cell (antibody concentration 10 ug/ml).