

## Product datasheet for **AM21025PU-N**

### alpha Tubulin (TUBA4A) Mouse Monoclonal Antibody [Clone ID: 2E11]

#### Product data:

Product Type:	Primary Antibodies
Clone Name:	2E11
Applications:	ELISA, IF, IHC, RNAi, WB
Recommended Dilution:	<b>ELISA.</b> <b>Immunofluorescence:</b> 10 µg/ml. <b>Immunohistochemistry on Paraffin Sections:</b> 5 µg/ml. <b>RNAi.</b> <b>Western Blot.</b>
Reactivity:	Human
Host:	Mouse
Isotype:	IgG2b
Clonality:	Monoclonal
Immunogen:	TUBA1 (AAH09238, 1 a.a. ~ 449 a.a) full length recombinant protein with GST tag.
Specificity:	This antibody recognizes Human Tubulin alpha-4 chain. Other species not tested.
Formulation:	PBS, pH 7.2 State: Liquid purified Ig fraction from Ascites
Concentration:	lot specific
Purification:	Protein A Chromatography
Conjugation:	Unconjugated
Storage:	Upon receipt, store undiluted (in aliquots) at -20°C. Avoid repeated freezing and thawing.
Stability:	Shelf life: one year from despatch.
Gene Name:	tubulin alpha 4a
Database Link:	<a href="#">Entrez Gene 7277 Human P68366</a>



[View online »](#)

**Background:**

Microtubules of the eukaryotic cytoskeleton perform essential and diverse functions and are composed of a heterodimer of alpha and beta tubulin. The genes encoding these microtubule constituents are part of the tubulin superfamily, which is composed of six distinct families. Genes from the alpha, beta and gamma tubulin families are found in all eukaryotes.

**Synonyms:**

Tubulin alpha-4A chain, Tubulin alpha-1 chain, Alpha-tubulin 1, Tubulin H2-alpha

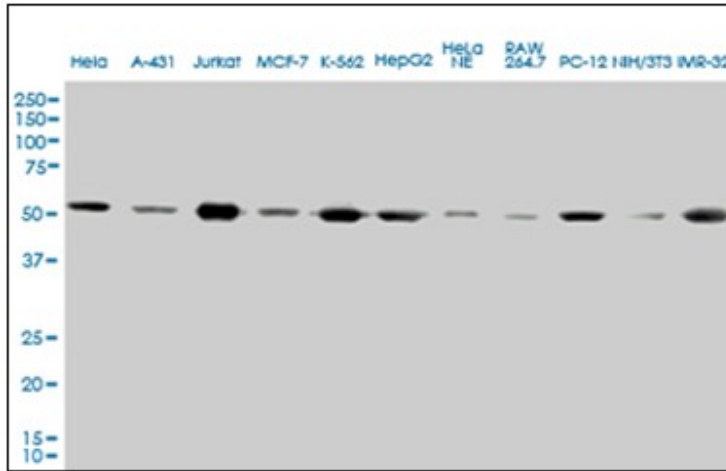
**Protein Families:**

Druggable Genome

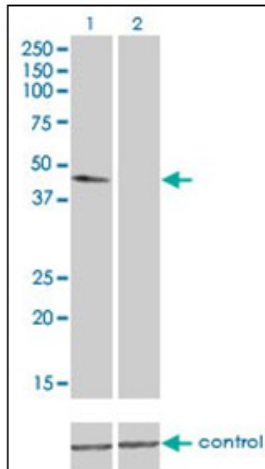
**Protein Pathways:**

Gap junction, Pathogenic Escherichia coli infection

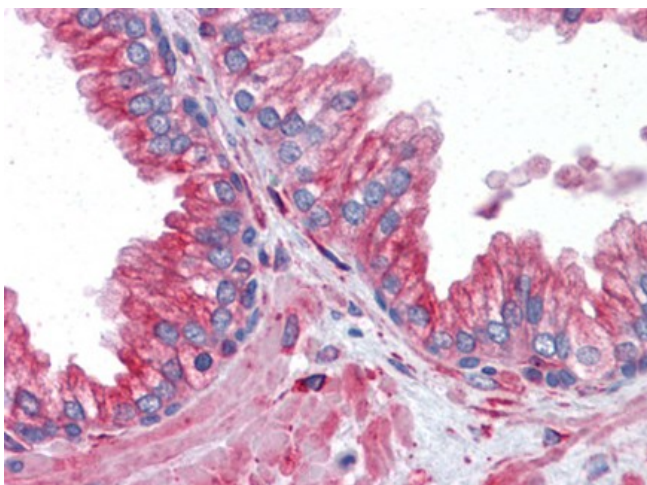
**Product images:**



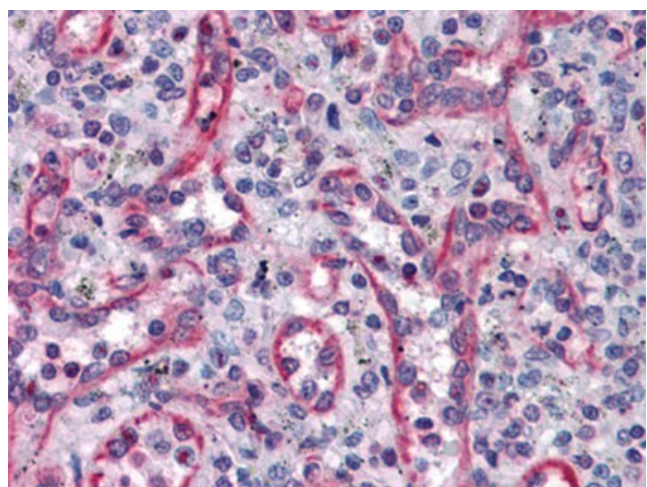
Western Blot analysis of TUBA1 expression in different Cell lines and Human Tissue using TUBA1 monoclonal antibody clone 2E11.



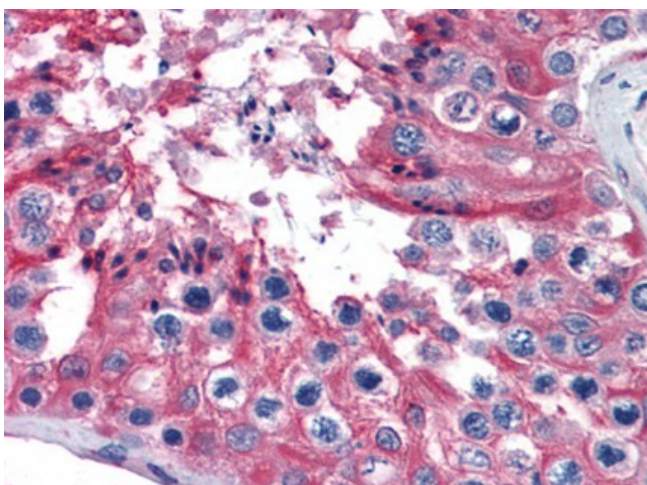
Western blot analysis of TUBA1 over-expressed 293 cell line, cotransfected with TUBA1 Validated Chimera RNAi (Lane 2) or non-transfected control (Lane 1). Blot probed with TUBA1 monoclonal antibody, clone 2E11. GAPDH ( 36.1 kD ) used as specificity



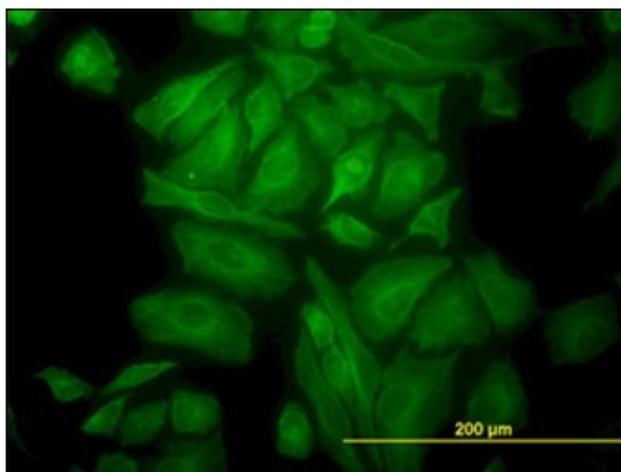
Prostate: Formalin-Fixed, Paraffin-Embedded (FFPE)



Human Spleen: Formalin-Fixed, Paraffin-Embedded (FFPE)



Human Testis: Formalin-Fixed, Paraffin-Embedded (FFPE)



Immunofluorescence of monoclonal antibody to TUBA1 on HeLa cell (antibody concentration 10 ug/ml).