

Product datasheet for **AM21023PU-N**

IBRDC2 (RNF144B) (1-101) Mouse Monoclonal Antibody [Clone ID: 4F1]

Product data:

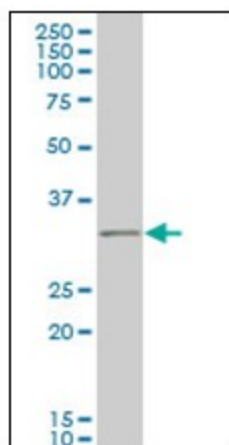
Product Type:	Primary Antibodies
Clone Name:	4F1
Applications:	ELISA, IF, IHC, WB
Recommended Dilution:	ELISA. Immunofluorescence: 10 µg/ml. Immunohistochemistry on Paraffin Sections: 5 µg/ml. Western Blot: 1/500 - 1/1000.
Reactivity:	Human
Host:	Mouse
Isotype:	IgG2a
Clonality:	Monoclonal
Immunogen:	IBRDC2 (NP_877434, 1 a.a. ~ 101 a.a) partial recombinant protein with GST tag. MW of the GST tag alone is 26 KDa.
Specificity:	This antibody reacts to Human Ring Finger Protein 144B (RNF144B).
Formulation:	PBS, pH 7.4 State: Purified State: Liquid purified Ig fraction
Concentration:	lot specific
Purification:	Protein A Chromatography
Conjugation:	Unconjugated
Storage:	Store the antibody undiluted at -20°C. Avoid repeated freezing and thawing.
Stability:	Shelf life: one year from despatch.
Gene Name:	ring finger protein 144B
Database Link:	Entrez Gene 255488 Human Q7Z419
Synonyms:	RING finger protein 144B, IBRDC2, P53RFP



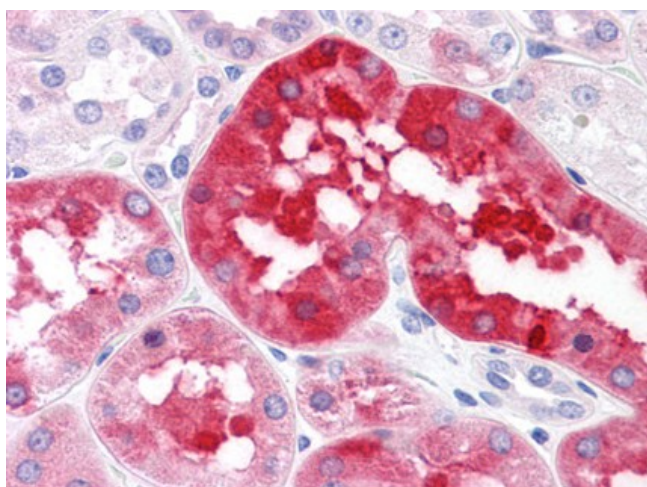
[View online »](#)

Protein Families: Transmembrane

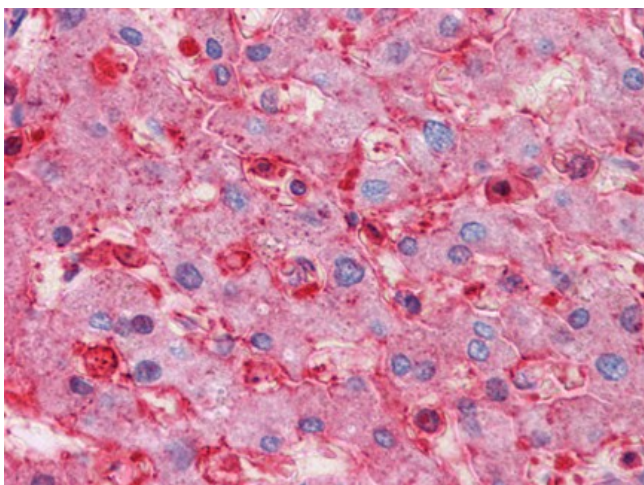
Product images:



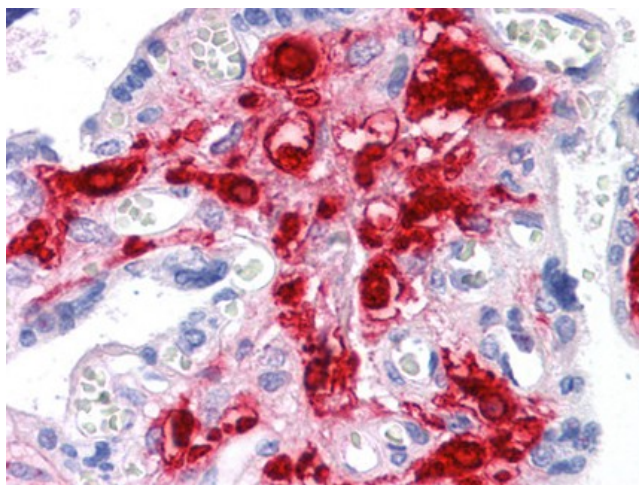
RNF144B monoclonal antibody, clone 4F1
Western Blot analysis of IBRDC2 expression in IMR-32.



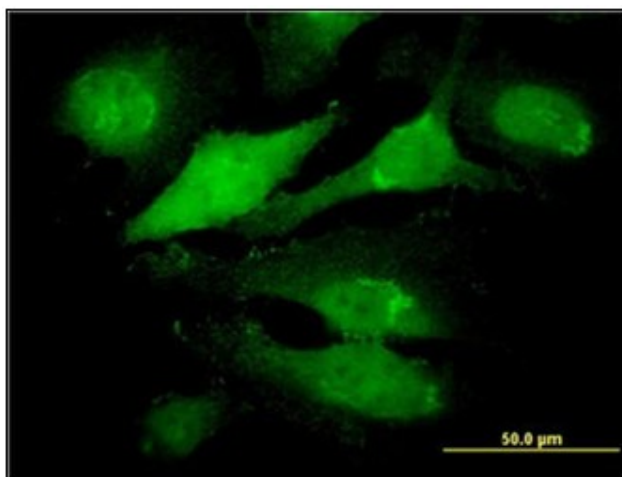
Human Kidney: Formalin-Fixed, Paraffin-Embedded (FFPE)



Human Liver: Formalin-Fixed, Paraffin-Embedded (FFPE)



Human Placenta: Formalin-Fixed, Paraffin-Embedded (FFPE)



Immunofluorescence of monoclonal antibody to IBRDC2 on HeLa cell (antibody concentration 10 ug/ml).