

Product datasheet for **AM21022PU-N**

HIPK1 Mouse Monoclonal Antibody [Clone ID: 1D6]

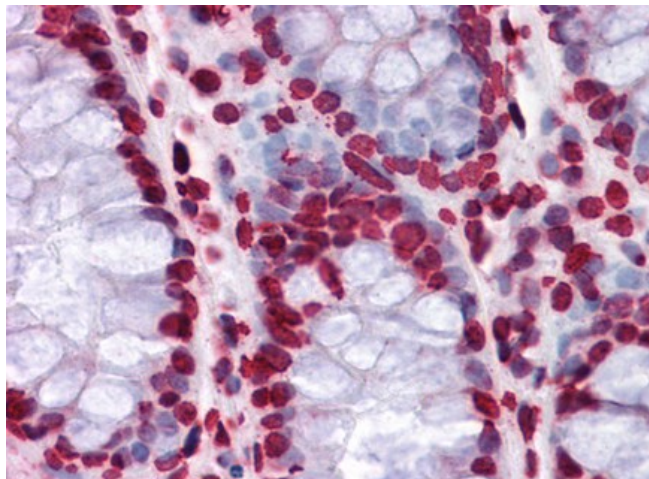
Product data:

| | |
|-----------------------|---|
| Product Type: | Primary Antibodies |
| Clone Name: | 1D6 |
| Applications: | ELISA, IHC |
| Recommended Dilution: | ELISA. Immunohistochemistry on Paraffin Sections: 5 µg/ml. |
| Reactivity: | Human |
| Host: | Mouse |
| Isotype: | IgG2a |
| Clonality: | Monoclonal |
| Immunogen: | Recombinant protein, HIPK1 (AAH28408, 330 a.a. ~ 430 a.a) partial recombinant protein with GST tag. MW of the GST tag alone is 26 KDa. |
| Specificity: | This antibody reacts to Homeodomain-Interacting Protein Kinase 1 (HIPK1). |
| Formulation: | PBS, pH 7.2 State: Liquid purified Ig fraction |
| Purification: | Protein A Chromatography |
| Conjugation: | Unconjugated |
| Storage: | Store the antibody at -20°C. Avoid repeated freezing and thawing. |
| Stability: | Shelf life: one year from despatch. |
| Gene Name: | homeodomain interacting protein kinase 1 |
| Database Link: | Entrez Gene 204851 Human Q86Z02 |
| Background: | HIPK1, a nuclear serine/threonine kinase similar to the MNB/DYRK type protein kinases, has a conserved protein kinase domain that is separated from a domain that interacts with homeoproteins. |
| Synonyms: | KIAA0630 |
| Protein Families: | Druggable Genome, Protein Kinase, Transcription Factors |

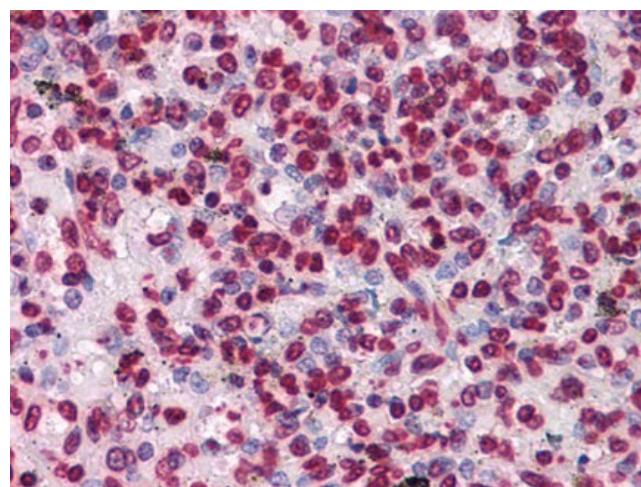


[View online »](#)

Product images:



Human Colon: Formalin-Fixed, Paraffin-Embedded (FFPE)



Human Spleen: Formalin-Fixed, Paraffin-Embedded (FFPE)