

## Product datasheet for **AM21019PU-N**

### **RPL39L Mouse Monoclonal Antibody [Clone ID: 4A8-1B6]**

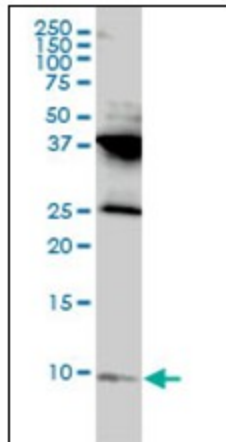
#### **Product data:**

Product Type:	Primary Antibodies
Clone Name:	4A8-1B6
Applications:	ELISA, IHC, WB
Recommended Dilution:	<b>ELISA.</b> <b>Immunohistochemistry on Paraffin Sections:</b> 5 µg/ml. <b>Western Blot.</b>
Reactivity:	Human
Host:	Mouse
Isotype:	IgG1
Clonality:	Monoclonal
Immunogen:	Recombinant protein, RPL39L (AAH12328, 1 a.a. ~ 52 a.a) full length recombinant protein with GST tag. MW of the GST tag alone is 26 KDa.
Specificity:	This antibody reacts to Ribosomal Protein L39 (RPL39L).
Formulation:	PBS, pH 7.2 State: Liquid purified Ig fraction
Concentration:	lot specific
Purification:	Protein A Chromatography
Conjugation:	Unconjugated
Storage:	Store the antibody at -20°C. Avoid repeated freezing and thawing.
Stability:	Shelf life: one year from despatch.
Gene Name:	ribosomal protein L39 like
Database Link:	<a href="#">Entrez Gene 116832 Human Q96EH5</a>
Synonyms:	L39-2; OTTHUMP00000209938; OTTHUMP00000209940; RPL39L1

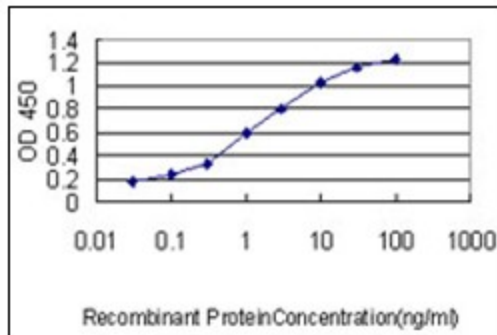


[View online »](#)

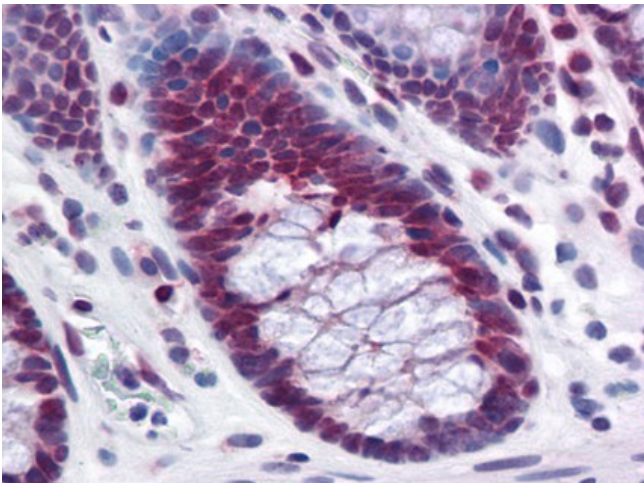
Product images:



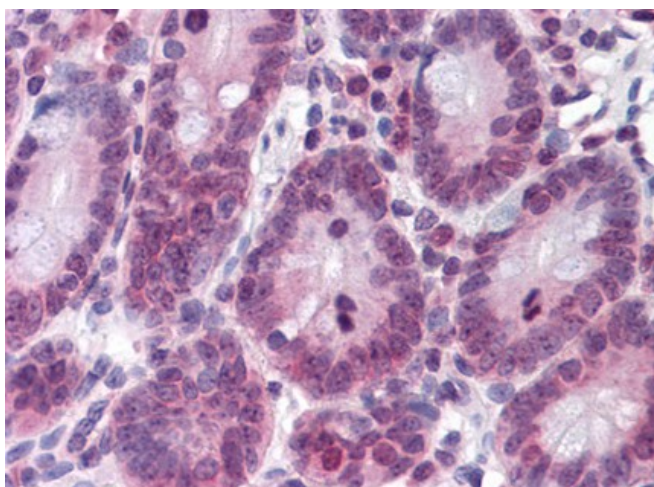
RPL39L monoclonal antibody, clone 4A8-1B6  
Western Blot analysis of RPL39L expression in HL-60.



Detection limit for recombinant GST tagged RPL39L is approximately 0.1 ng/ml as a capture antibody.



Human Colon: Formalin-Fixed, Paraffin-Embedded (FFPE)



Human Small Intestine: Formalin-Fixed, Paraffin-Embedded (FFPE)