

## Product datasheet for **AM21016PU-N**

### Epithelial Stromal Interaction 1 (EPSTI1) Mouse Monoclonal Antibody [Clone ID: 2A8]

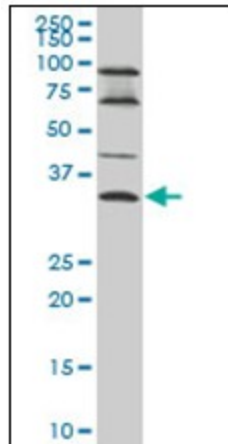
#### Product data:

Product Type:	Primary Antibodies
Clone Name:	2A8
Applications:	ELISA, IHC, WB
Recommended Dilution:	<b>ELISA.</b> <b>Immunohistochemistry on Paraffin Sections:</b> 5 µg/ml. <b>Western Blot.</b>
Reactivity:	Human
Host:	Mouse
Isotype:	IgG1
Clonality:	Monoclonal
Immunogen:	Recombinant protein, EPSTI1 (NP_001002264, 1 a.a. ~ 101 a.a) partial recombinant protein with GST tag. MW of the GST tag alone is 26 KDa.
Specificity:	This antibody reacts to Epithelial-Stromal Interaction Protein 1 (EPSTI1).
Formulation:	PBS, pH 7.2 State: Liquid purified Ig fraction
Purification:	Protein A Chromatography
Conjugation:	Unconjugated
Storage:	Store the antibody at -20°C. Avoid repeated freezing and thawing.
Stability:	Shelf life: one year from despatch.
Gene Name:	epithelial stromal interaction 1 (breast)
Database Link:	<a href="#">Entrez Gene 94240 Human Q96J88</a>
Synonyms:	BRESI1; MGC29634
Protein Families:	Transmembrane

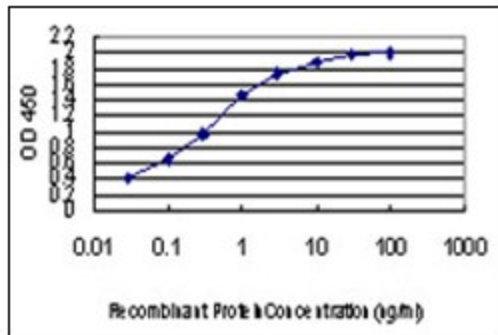


[View online »](#)

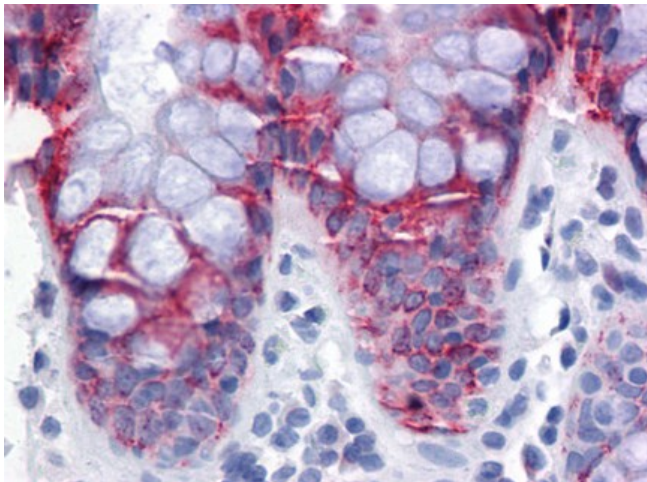
Product images:



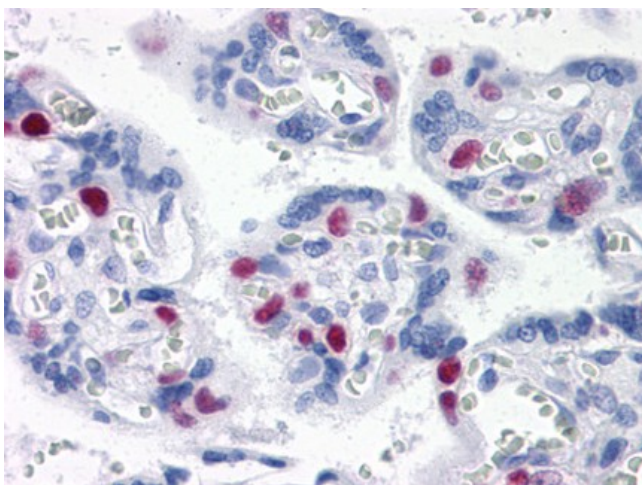
EPSTI1 monoclonal antibody, clone 2A8 Western Blot analysis of EPSTI1 expression in A-431.



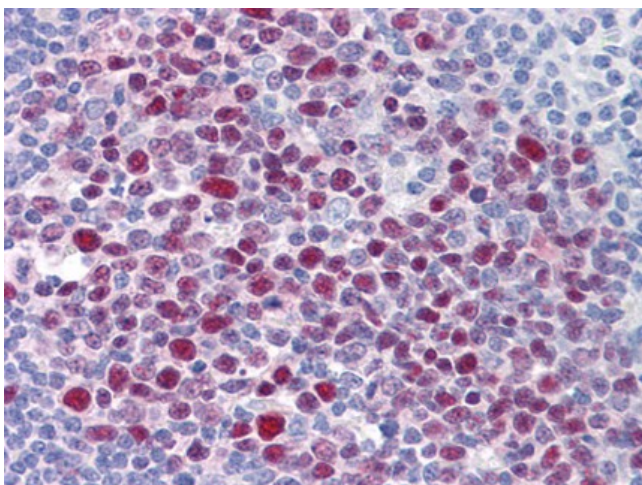
Detection limit for recombinant GST tagged EPSTI1 is approximately 0.03 ng/ml as a capture antibody.



Human Colon: Formalin-Fixed, Paraffin-Embedded (FFPE)



Human Placenta: Formalin-Fixed, Paraffin-Embedded (FFPE)



Human Tonsil: Formalin-Fixed, Paraffin-Embedded (FFPE)