

## Product datasheet for **AM21015PU-N**

### WDR20 (1-570) Mouse Monoclonal Antibody [Clone ID: 2A6]

#### Product data:

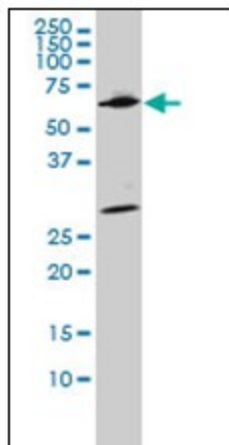
Product Type:	Primary Antibodies
Clone Name:	2A6
Applications:	ELISA, IF, IHC, WB
Recommended Dilution:	<b>ELISA.</b> <b>Immunofluorescence:</b> 10 µg/ml. <b>Immunohistochemistry on Paraffin Sections:</b> 5 µg/ml. <b>Western Blot.</b>
Reactivity:	Human
Host:	Mouse
Isotype:	IgG1
Clonality:	Monoclonal
Immunogen:	WDR20 (AAH28387, 1 a.a. ~ 570 a.a) full length recombinant protein with GST tag
Specificity:	This antibody reacts to full length Repeat-Containing Protein 20 (WDR20).
Formulation:	PBS, pH 7.4 State: Purified State: Liquid purified Ig fraction
Concentration:	lot specific
Purification:	Protein A Chromatography
Conjugation:	Unconjugated
Storage:	Upon receipt, store undiluted (in aliquots) at -20°C. Avoid repeated freezing and thawing.
Stability:	Shelf life: one year from despatch.
Gene Name:	WD repeat domain 20
Database Link:	<a href="#">Entrez Gene 91833 Human</a> <a href="#">Q8TBZ3</a>
Background:	WDR20 encodes a WD repeat-containing protein that functions to preserve and regulate the activity of the USP12-UAF1 deubiquitinating enzyme complex. Multiple alternatively spliced transcript variants have been found for this gene.



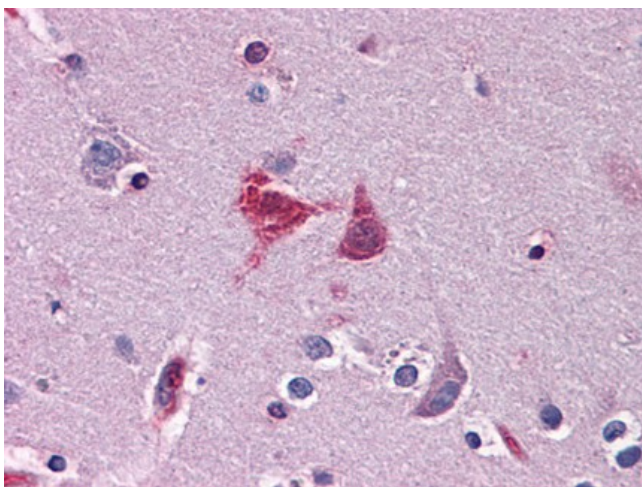
[View online »](#)

Synonyms: DMR; FLJ33659; MGC33177; MGC33183

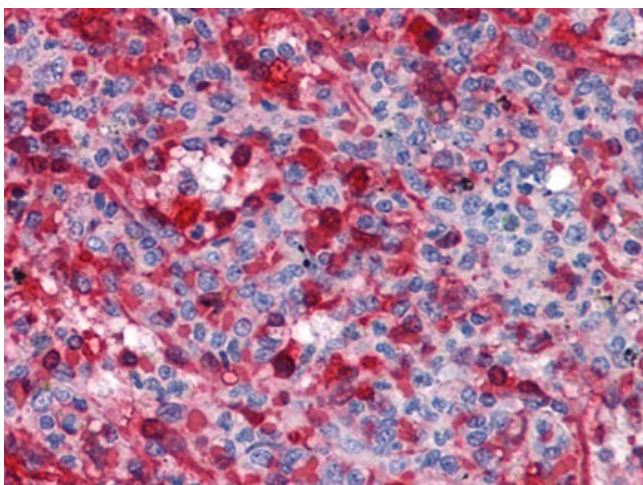
### Product images:



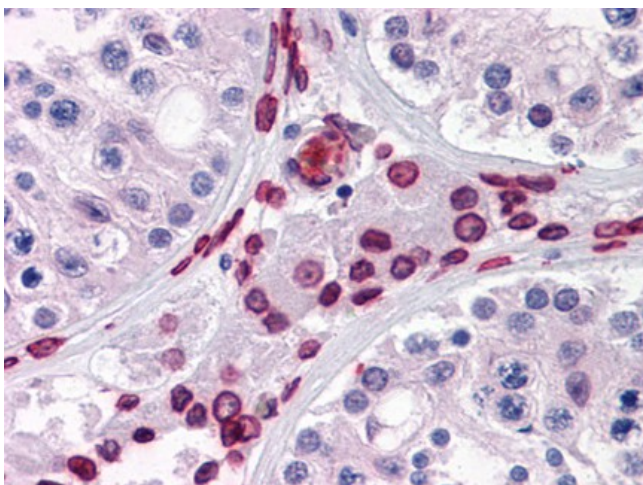
WDR20 monoclonal antibody, clone 2A6 Western Blot analysis of WDR20 expression in HeLa NE.



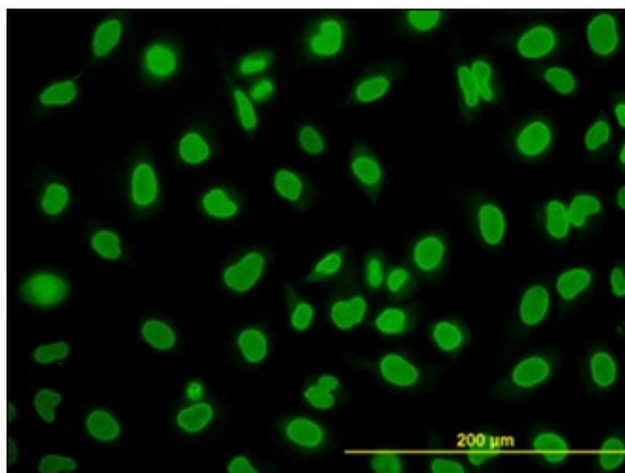
Human Brain, Cortex: Formalin-Fixed, Paraffin-Embedded (FFPE)



Human Spleen: Formalin-Fixed, Paraffin-Embedded (FFPE)



Human Testis: Formalin-Fixed, Paraffin-Embedded (FFPE)



Immunofluorescence of monoclonal antibody to WDR20 on HeLa cell (antibody concentration 10 ug/ml).