

## Product datasheet for **AM21014PU-N**

### SPSB2 Mouse Monoclonal Antibody [Clone ID: 1E6]

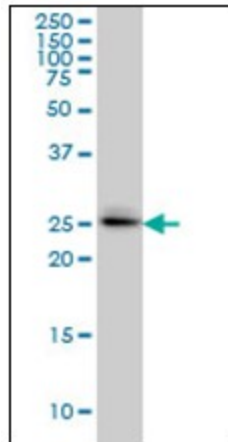
#### Product data:

Product Type:	Primary Antibodies
Clone Name:	1E6
Applications:	ELISA, IHC, WB
Recommended Dilution:	<b>ELISA.</b> <b>Immunohistochemistry on Paraffin Sections:</b> 5 µg/ml. <b>Western Blot.</b>
Reactivity:	Human
Host:	Mouse
Isotype:	IgG1
Clonality:	Monoclonal
Immunogen:	Recombinant protein, GRCC9 (AAH02983, 1 a.a. ~ 91 a.a) partial recombinant protein with GST tag. MW of the GST tag alone is 26 KDa.
Specificity:	This antibody reacts to SplA/ryanodine Receptor Domain And SOCS Box Containing 2 (SPSB2).
Formulation:	PBS, pH 7.2 State: Liquid purified Ig fraction
Concentration:	lot specific
Purification:	Protein A Chromatography
Conjugation:	Unconjugated
Storage:	Store the antibody at -20°C. Avoid repeated freezing and thawing.
Stability:	Shelf life: one year from despatch.
Gene Name:	splA/ryanodine receptor domain and SOCS box containing 2
Database Link:	<a href="#">Entrez Gene 84727 Human Q99619</a>
Synonyms:	SSB2, SSB-2
Protein Families:	Druggable Genome

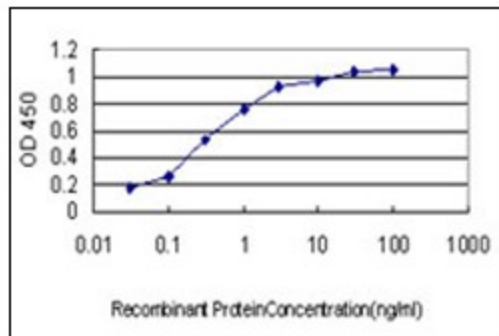


[View online »](#)

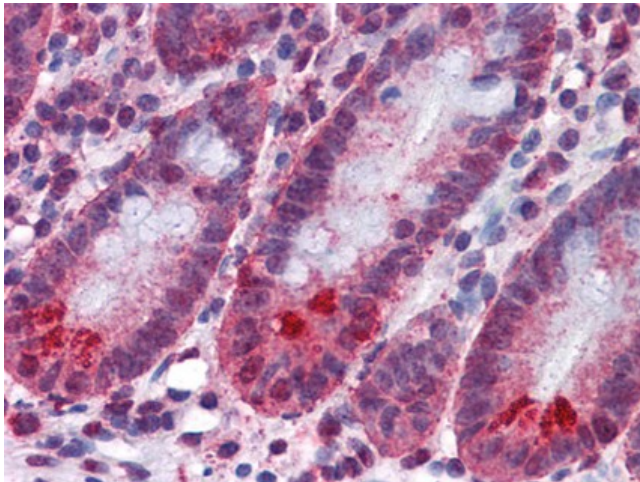
Product images:



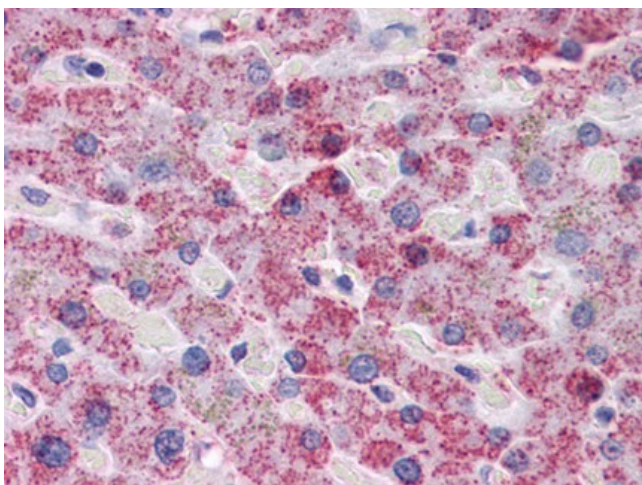
GRCC9 monoclonal antibody, clone 1E6 Western Blot analysis of SPSB2 expression in A-549.



Detection limit for recombinant GST tagged SPSB2 is approximately 0.03 ng/ml as a capture antibody.



Human Small Intestine: Formalin-Fixed, Paraffin-Embedded (FFPE)



Human Liver: Formalin-Fixed, Paraffin-Embedded (FFPE)