

## Product datasheet for **AM21005PU-N**

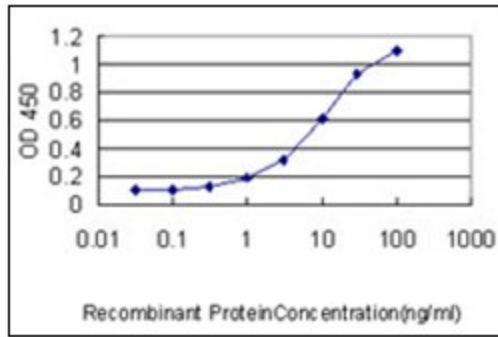
### SLC44A2 Mouse Monoclonal Antibody [Clone ID: 3D11]

#### Product data:

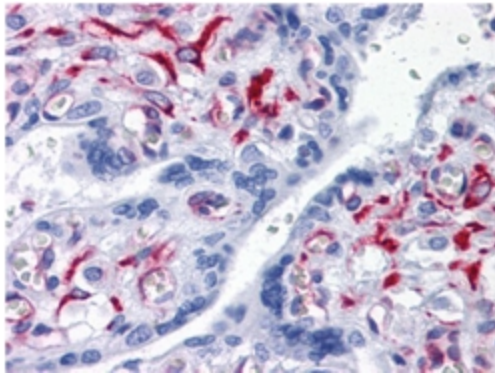
Product Type:	Primary Antibodies
Clone Name:	3D11
Applications:	ELISA, IHC, WB
Recommended Dilution:	<b>ELISA.</b> <b>Immunohistochemistry on Paraffin Sections:</b> 10 µg/ml. <b>Western Blot.</b>
Reactivity:	Human
Host:	Mouse
Isotype:	IgG1
Clonality:	Monoclonal
Immunogen:	CTL2 (AAH40556, 123 a.a. ~ 231 a.a) partial recombinant protein with GST tag.
Specificity:	This antibody recognizes Human Choline Transporter-Like Protein (CTL2) (SLC44A2). Other species not tested.
Formulation:	PBS, pH 7.2 State: Liquid purified Ig fraction
Concentration:	lot specific
Purification:	Protein A Chromatography
Conjugation:	Unconjugated
Storage:	Store (in aliquots) at -20°C. Avoid repeated freezing and thawing.
Stability:	Shelf life: one year from despatch.
Gene Name:	solute carrier family 44 member 2
Database Link:	<a href="#">Entrez Gene 57153 Human Q8IWA5</a>
Synonyms:	Choline transporter-like protein 2
Protein Families:	Transmembrane



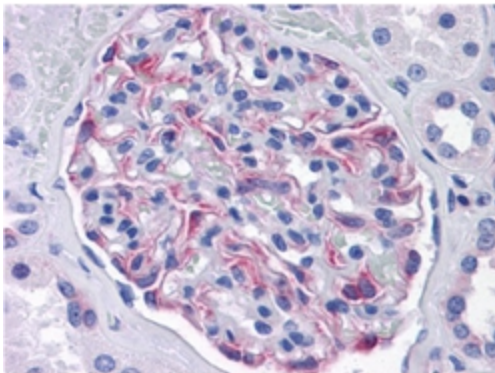
[View online »](#)

**Product images:**

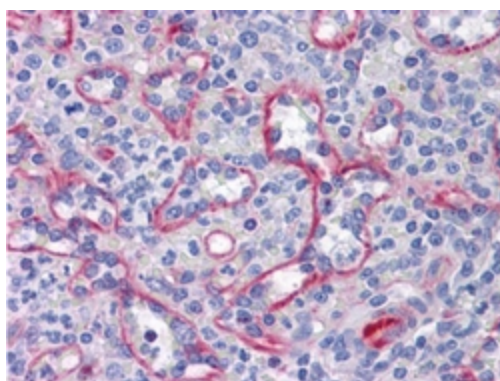
Detection limit for recombinant GST tagged SLC44A2 is approximately 0.3 ng/ml as a capture antibody.



Formalin-Fixed, Paraffin-Embedded Human Placenta stained with SLC44A2 / CTL2 antibody using heat-induced antigen retrieval.



Formalin-Fixed, Paraffin-Embedded Human Kidney stained with SLC44A2 / CTL2 antibody using heat-induced antigen retrieval.



Formalin-Fixed, Paraffin-Embedded Human Spleen stained with SLC44A2 / CTL2 antibody using heat-induced antigen retrieval.