

Product datasheet for **AM21004PU-N**

AKR1B10 Mouse Monoclonal Antibody [Clone ID: 1A6]

Product data:

Product Type:	Primary Antibodies
Clone Name:	1A6
Applications:	ELISA, IF, IHC, WB
Recommended Dilution:	ELISA. Immunofluorescence: 10 µg/ml. Immunohistochemistry on Paraffin Sections: 5 µg/ml. Western Blot.
Reactivity:	Human
Host:	Mouse
Isotype:	IgG2a
Clonality:	Monoclonal
Immunogen:	Recombinant protein, AKR1B10 (NP_064695, 76 a.a. ~ 144 a.a) partial recombinant protein with GST tag.
Specificity:	This antibody recognizes Aldo-Keto Reductase Family 1, Member B10 (Aldose Reductase) (AKR1B10).
Formulation:	PBS, pH 7.2 State: Purified State: Liquid purified Ig fraction
Concentration:	lot specific
Purification:	Protein A Chromatography
Conjugation:	Unconjugated
Storage:	Store the antibody (in aliquots) at -20°C. Avoid repeated freezing and thawing.
Stability:	Shelf life: one year from despatch.
Gene Name:	aldo-keto reductase family 1, member B10 (aldose reductase)
Database Link:	Entrez Gene 57016 Human O60218
Synonyms:	AKR1B11, Aldose reductase-like, ARL-1

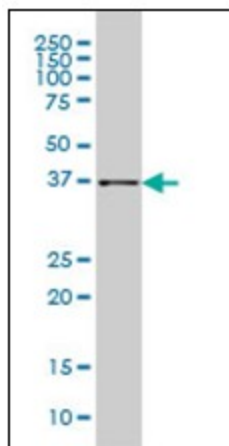


[View online »](#)

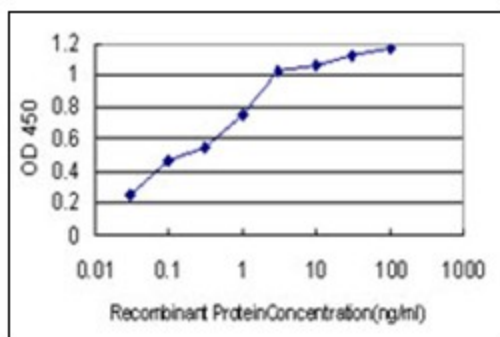
Protein Families: Druggable Genome

Protein Pathways: Butanoate metabolism, Fructose and mannose metabolism, Linoleic acid metabolism, Metabolic pathways

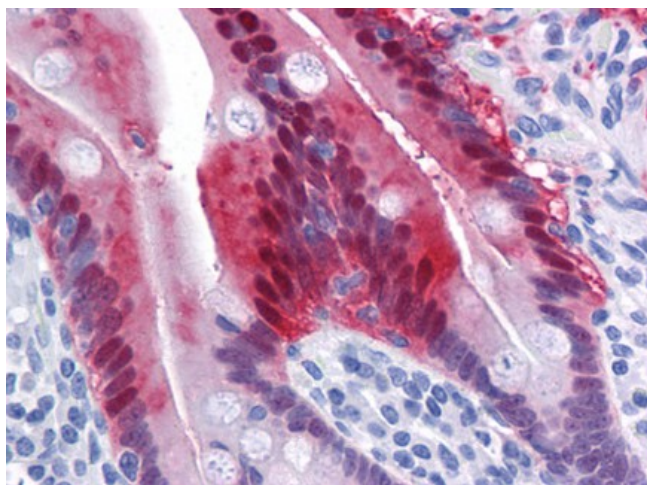
Product images:



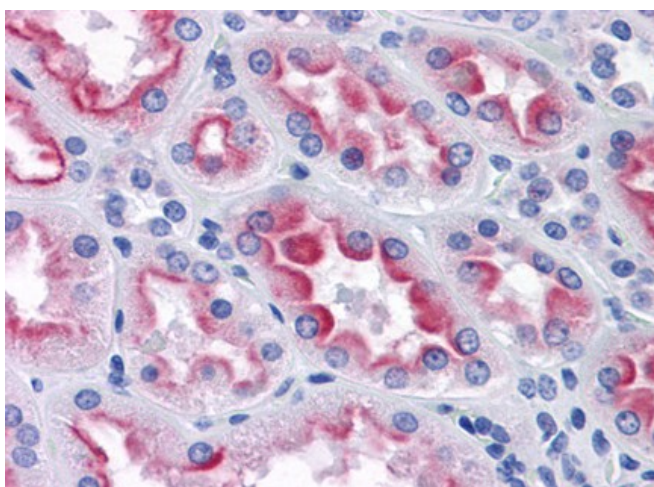
AKR1B10 monoclonal antibody, clone 1A6
Western Blot analysis of AKR1B10 expression in HepG2.



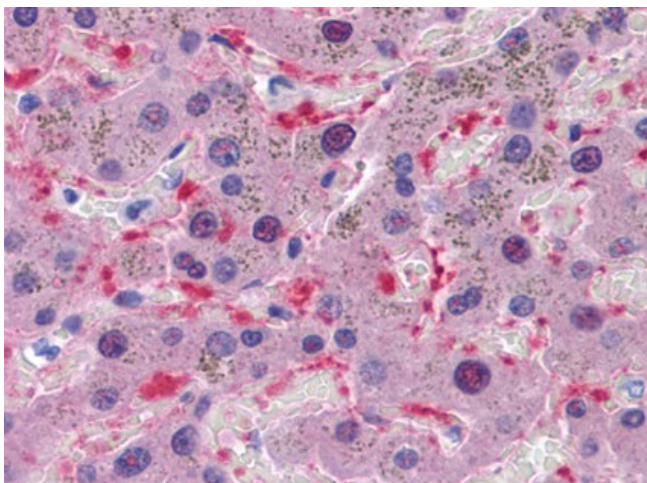
Detection limit for recombinant GST tagged AKR1B10 is approximately 0.03 ng/ml as a capture antibody.



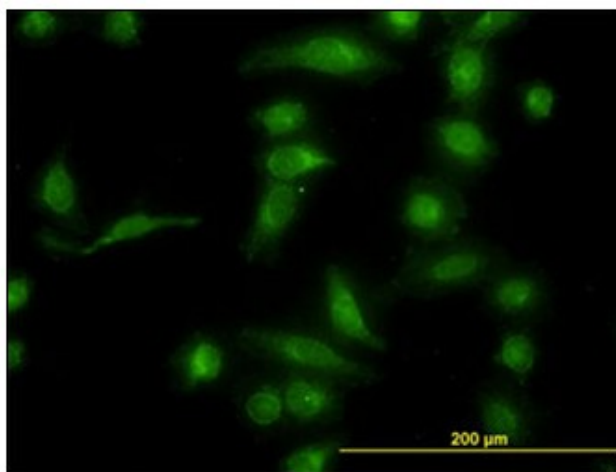
Human Small Intestine: Formalin-Fixed, Paraffin-Embedded (FFPE)



Human Kidney: Formalin-Fixed, Paraffin-Embedded (FFPE)



Human Liver: Formalin-Fixed, Paraffin-Embedded (FFPE)



Immunofluorescence of monoclonal antibody to AKR1B10 on HeLa cell (antibody concentration 10 ug/ml).