

## Product datasheet for **AM21002PU-N**

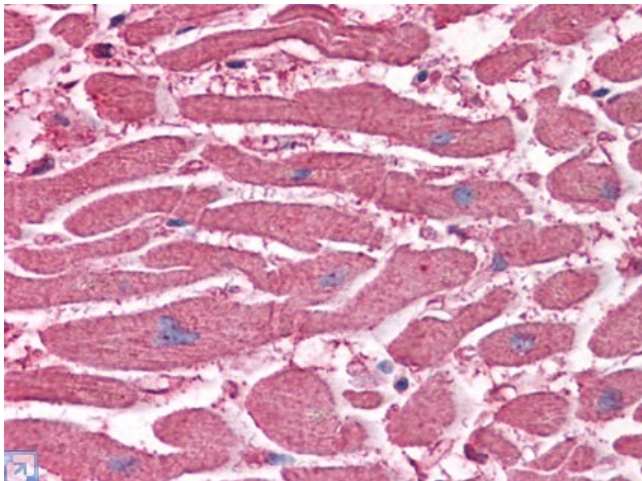
### **C20orf31 (EDEM2) Mouse Monoclonal Antibody [Clone ID: 2E4]**

#### **Product data:**

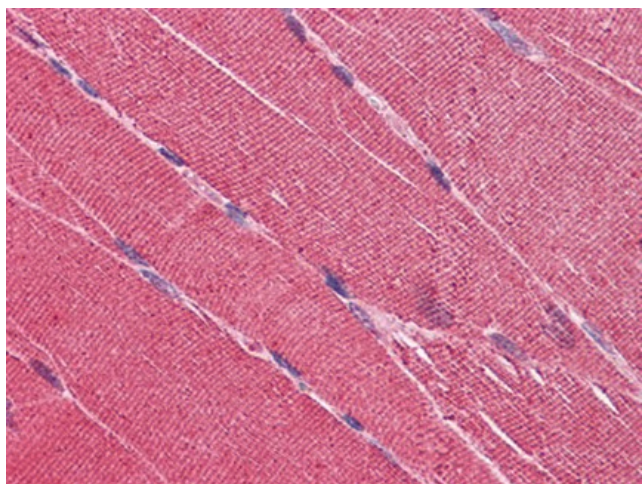
Product Type:	Primary Antibodies
Clone Name:	2E4
Applications:	ELISA, IHC, WB
Recommended Dilution:	<b>ELISA.</b> <b>Immunohistochemistry on Paraffin Sections:</b> 2.5 µg/ml. <b>Western Blot.</b>
Reactivity:	Human
Host:	Mouse
Isotype:	IgG1
Clonality:	Monoclonal
Immunogen:	Recombinant protein, C20orf31 (NP_060687, 479 a.a. ~ 579 a.a) partial recombinant protein with GST tag. MW of the GST tag alone is 26 KDa.
Specificity:	This antibody reacts to ER Degradation Enhancer, Mannosidase Alpha-like 2 (EDEM2).
Formulation:	PBS, pH 7.2 State: Liquid purified Ig fraction
Concentration:	lot specific
Purification:	Protein A Chromatography
Conjugation:	Unconjugated
Storage:	Store the antibody at -20°C. Avoid repeated freezing and thawing.
Stability:	Shelf life: one year from despatch.
Gene Name:	ER degradation enhancing alpha-mannosidase like protein 2
Database Link:	<a href="#">Entrez Gene 55741 Human Q9BV94</a>
Synonyms:	C20orf31, C20orf49
Protein Families:	Secreted Protein



[View online »](#)

**Product images:**

Human Heart: Formalin-Fixed, Paraffin-Embedded (FFPE)



Human Skeletal Muscle: Formalin-Fixed, Paraffin-Embedded (FFPE)