

Product datasheet for **AM20999PU-N**

ATP6V1D Mouse Monoclonal Antibody [Clone ID: 3G4]

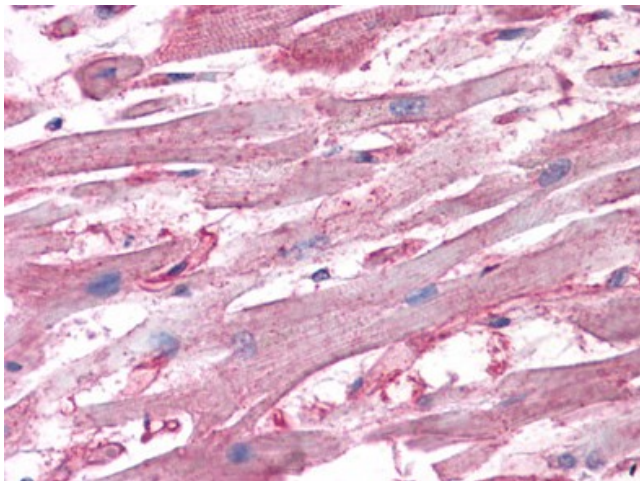
Product data:

Product Type:	Primary Antibodies
Clone Name:	3G4
Applications:	ELISA, IHC, WB
Recommended Dilution:	ELISA. Immunohistochemistry on Paraffin Sections: 2.5 µg/ml. Western Blot.
Reactivity:	Human
Host:	Mouse
Isotype:	IgG2a
Clonality:	Monoclonal
Immunogen:	Recombinant protein, ATP6V1D (NP_057078, 69 a.a. ~ 169 a.a) partial recombinant protein with GST tag. MW of the GST tag alone is 26 KDa.
Specificity:	This antibody reacts to Cysteine-rich Motor Neuron 1 (CRIM1).
Formulation:	PBS, pH 7.2 State: Liquid purified Ig fraction
Concentration:	lot specific
Purification:	Protein A Chromatography
Conjugation:	Unconjugated
Storage:	Store the antibody at -20°C. Avoid repeated freezing and thawing.
Stability:	Shelf life: one year from despatch.
Gene Name:	ATPase H ⁺ transporting V1 subunit D
Database Link:	Entrez Gene 51382 Human Q9Y5K8
Synonyms:	V-ATPase subunit D, ATP6M, VATD
Protein Pathways:	Epithelial cell signaling in Helicobacter pylori infection, Metabolic pathways, Oxidative phosphorylation, Vibrio cholerae infection

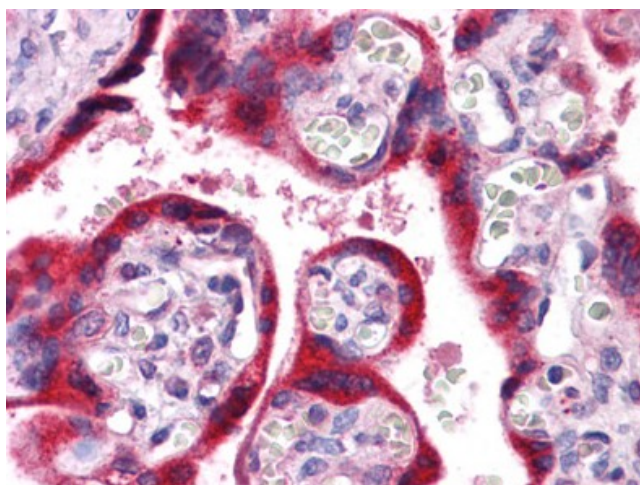


[View online »](#)

Product images:



Human Heart: Formalin-Fixed, Paraffin-Embedded (FFPE)



Human Placenta: Formalin-Fixed, Paraffin-Embedded (FFPE)