

## Product datasheet for **AM20998PU-N**

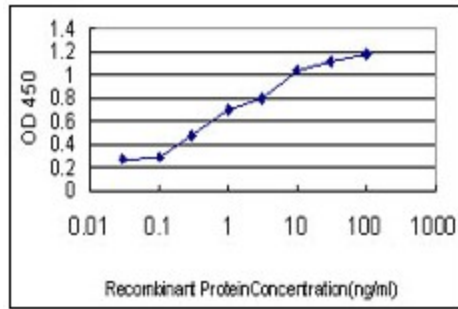
### CRIM1 Mouse Monoclonal Antibody [Clone ID: 6E4]

#### Product data:

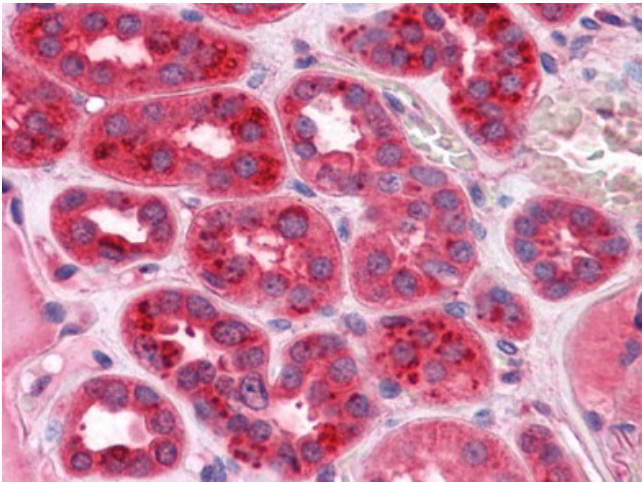
Product Type:	Primary Antibodies
Clone Name:	6E4
Applications:	ELISA, IHC, WB
Recommended Dilution:	<b>ELISA.</b> <b>Immunohistochemistry on Paraffin Sections:</b> 2.5 µg/ml. <b>Western Blot.</b>
Reactivity:	Human
Host:	Mouse
Isotype:	IgG2a
Clonality:	Monoclonal
Immunogen:	Recombinant protein, CRIM1 (NP_057525, 36 a.a. ~ 146 a.a) partial recombinant protein with GST tag. MW of the GST tag alone is 26 KDa.
Specificity:	This antibody reacts to Cysteine-rich Motor Neuron 1 (CRIM1).
Formulation:	PBS, pH 7.2 State: Liquid purified Ig fraction
Concentration:	lot specific
Purification:	Protein A Chromatography
Conjugation:	Unconjugated
Storage:	Store the antibody at -20°C. Avoid repeated freezing and thawing.
Stability:	Shelf life: one year from despatch.
Gene Name:	cysteine rich transmembrane BMP regulator 1 (chordin-like)
Database Link:	<a href="#">Entrez Gene 51232 Human</a> <a href="#">Q9NZV1</a>
Synonyms:	Cysteine-rich motor neuron 1 protein, CRIM-1, S52
Protein Families:	Druggable Genome, Secreted Protein, Transmembrane



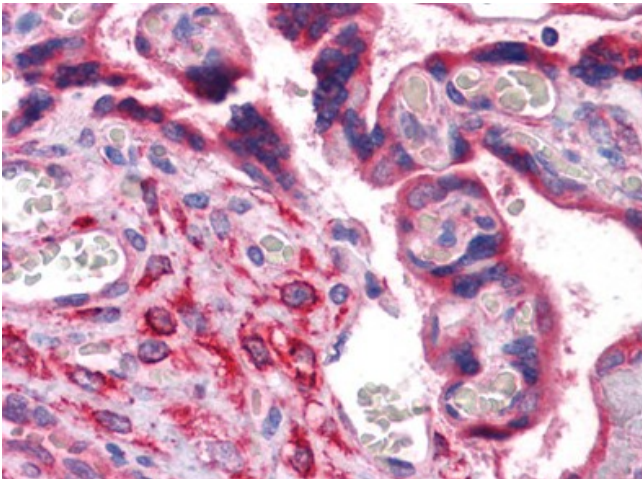
[View online »](#)

**Product images:**

Detection limit for recombinant GST tagged CRIM1 is approximately 0.03 ng/ml as a capture antibody.



Human Kidney: Formalin-Fixed, Paraffin-Embedded (FFPE)



Human Placenta: Formalin-Fixed, Paraffin-Embedded (FFPE)