

## Product datasheet for **AM20997PU-N**

### **Bif (SH3GLB1) Mouse Monoclonal Antibody [Clone ID: 1B3-A5]**

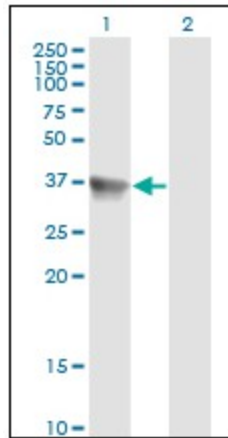
#### **Product data:**

Product Type:	Primary Antibodies
Clone Name:	1B3-A5
Applications:	ELISA, IHC, WB
Recommended Dilution:	<b>ELISA.</b> <b>Immunohistochemistry on Paraffin Sections:</b> 2.5 µg/ml. <b>Western Blot.</b>
Reactivity:	Human
Host:	Mouse
Isotype:	IgG1
Clonality:	Monoclonal
Immunogen:	Recombinant protein, SH3GLB1 (AAH07455, 1 a.a. ~ 366 a.a) full length recombinant protein with GST tag. MW of the GST tag alone is 26 KDa.
Specificity:	This antibody reacts to SH3-domain, GRB2-like, Endophilin B1 (BIF1) (SH3GLB1).
Formulation:	PBS, pH 7.2 State: Liquid purified Ig fraction
Concentration:	lot specific
Purification:	Protein A Chromatography
Conjugation:	Unconjugated
Storage:	Store the antibody at -20°C. Avoid repeated freezing and thawing.
Stability:	Shelf life: one year from despatch.
Gene Name:	SH3 domain containing GRB2 like endophilin B1
Database Link:	<a href="#">Entrez Gene 51100 Human Q9Y371</a>
Synonyms:	SH3GLB1, KIAA0491, BIF1, Bif-1
Protein Pathways:	Endocytosis

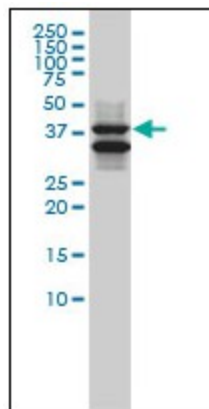


[View online »](#)

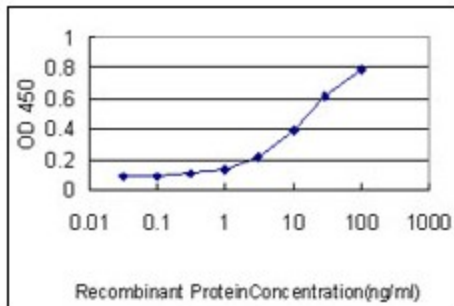
Product images:



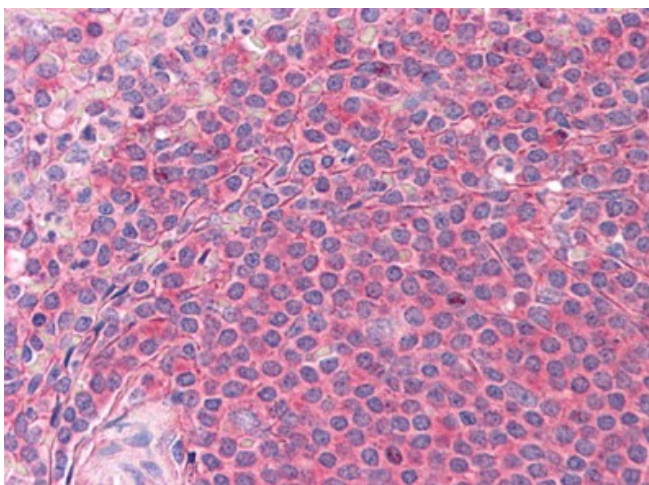
Western Blot analysis of SH3GLB1 expression in transfected 293T cell line by SH3GLB1 monoclonal antibody, clone 1B3-A5.



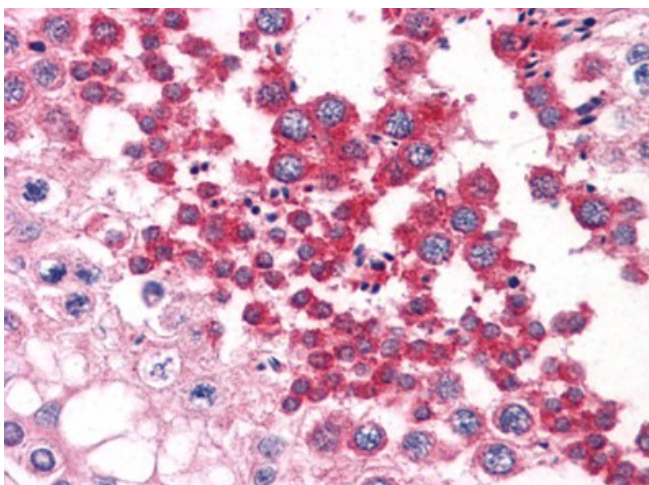
SH3GLB1 monoclonal antibody, clone 1B3-A5  
Western Blot analysis of SH3GLB1 expression in K-562.



Detection limit for recombinant GST tagged SH3GLB1 is approximately 0.3 ng/ml as a capture antibody.



Human Spleen: Formalin-Fixed, Paraffin-Embedded (FFPE)



Human Testis: Formalin-Fixed, Paraffin-Embedded (FFPE)