

## Product datasheet for **AM20996PU-N**

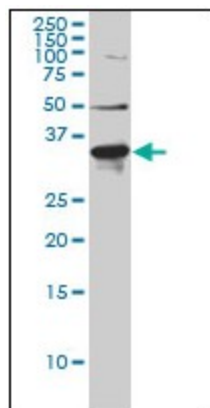
### ARH (LDLRAP1) Mouse Monoclonal Antibody [Clone ID: 4G4-D5]

#### Product data:

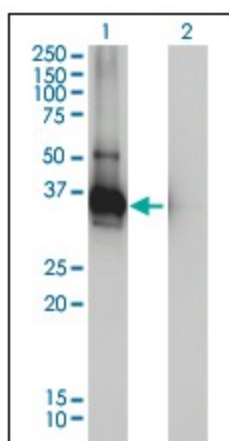
|                       |   |
|-----------------------|---|
| Product Type:         | Primary Antibodies  |
| Clone Name:           | 4G4-D5  |
| Applications:         | ELISA, IF, IHC, WB  |
| Recommended Dilution: | <b>ELISA.</b><br><b>Immunofluorescence:</b> 10 µg/ml.<br><b>Immunohistochemistry on Paraffin Sections:</b> 5 µg/ml.<br><b>Western Blot.</b> |
| Reactivity:           | Human   |
| Host:                 | Mouse   |
| Isotype:              | IgG1  |
| Clonality:            | Monoclonal  |
| Immunogen:            | Recombinant protein, LDLRAP1 (AAH29770, 1 a.a. ~ 264 a.a) full length recombinant protein with GST tag. MW of the GST tag alone is 26 KDa.  |
| Specificity:          | This antibody reacts to Low Density Lipoprotein Receptor Adaptor Protein 1 (LDLRAP1).   |
| Formulation:          | PBS, pH 7.2<br>State: Liquid purified Ig fraction   |
| Purification:         | Protein A Chromatography  |
| Conjugation:          | Unconjugated  |
| Storage:              | Store the antibody at -20°C.<br>Avoid repeated freezing and thawing.  |
| Stability:            | Shelf life: one year from despatch.   |
| Gene Name:            | low density lipoprotein receptor adaptor protein 1  |
| Database Link:        | <a href="#">Entrez Gene 26119 Human Q5SW96</a>  |
| Synonyms:             | LDLRAP1, ARH  |
| Protein Families:     | Druggable Genome  |
| Protein Pathways:     | Endocytosis   |



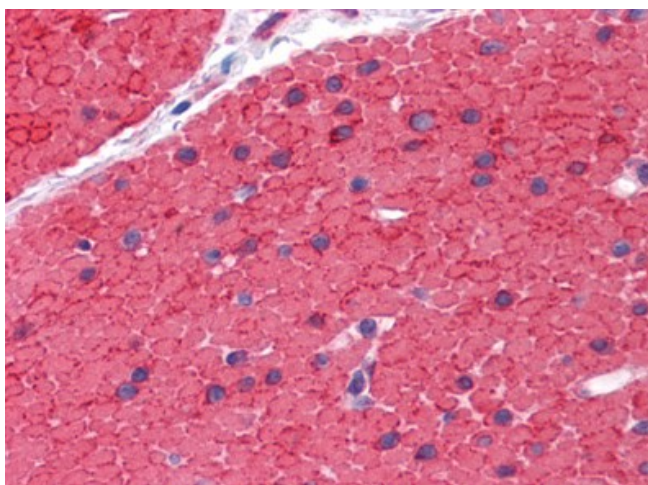
[View online »](#)

**Product images:**


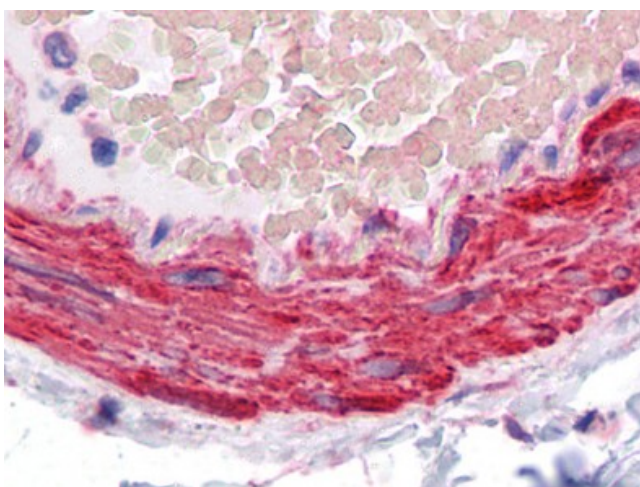
LDLRAP1 monoclonal antibody, clone 4G4-D5  
Western Blot analysis of LDLRAP1 expression in Hela NE.



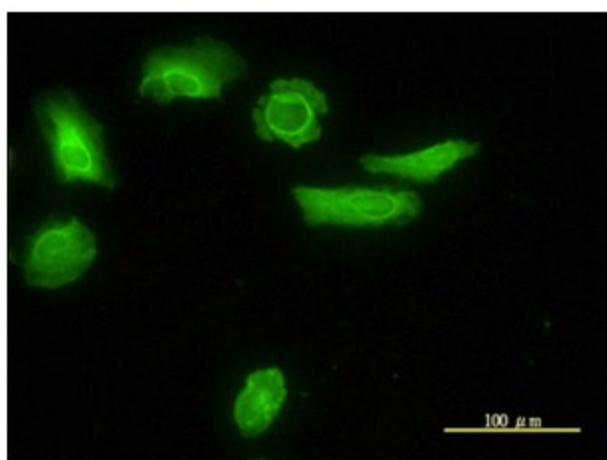
Western Blot analysis of LDLRAP1 expression in transfected 293T cell line by LDLRAP1 monoclonal antibody, clone 4G4-D5.



Human Small Intestine, muscularis propria:  
Formalin-Fixed, Paraffin-Embedded (FFPE)



Human Vessel: Formalin-Fixed, Paraffin-Embedded (FFPE)



Immunofluorescence of monoclonal antibody to LDLRAP1 on HeLa cell (antibody concentration 10 ug/ml).