

Product datasheet for **AM20994PU-N**

TDP43 (TARDBP) (1-261) Mouse Monoclonal Antibody [Clone ID: 2E2-D3]

Product data:

Product Type:	Primary Antibodies
Clone Name:	2E2-D3
Applications:	ELISA, IF, IHC, RNAi, WB
Recommended Dilution:	ELISA. Immunofluorescence: 10 µg/ml. Immunohistochemistry on Paraffin Sections: 5 µg/ml. RNAi. Western Blot.
Reactivity:	Human
Host:	Mouse
Isotype:	IgG1
Clonality:	Monoclonal
Immunogen:	TARDBP (AAH01487, 1 a.a. ~ 261 a.a) full length recombinant protein with GST tag
Specificity:	This antibody reacts to TAR DNA-binding Protein-43 (TARDBP) at aa 1-261.
Formulation:	PBS, pH 7.4 State: Purified State: Liquid purified Ig fraction
Concentration:	lot specific
Purification:	Protein A Chromatography
Conjugation:	Unconjugated
Storage:	Upon receipt, store undiluted (in aliquots) at -20°C. Avoid repeated freezing and thawing.
Stability:	Shelf life: one year from despatch.
Gene Name:	TAR DNA binding protein
Database Link:	Entrez Gene 23435 Human Q13148



[View online »](#)

Background:

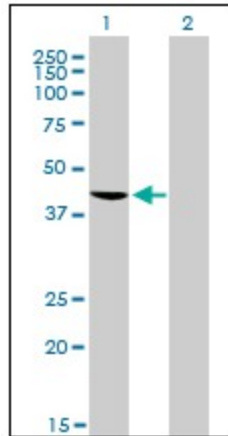
DNA and RNA-binding protein which regulates transcription and splicing. Involved in the regulation of CFTR splicing. It promotes CFTR exon 9 skipping by binding to the UG repeated motifs in the polymorphic region near the 3'-splice site of this exon. The resulting aberrant splicing is associated with pathological features typical of cystic fibrosis. May also be involved in microRNA biogenesis, apoptosis and cell division.

Synonyms:

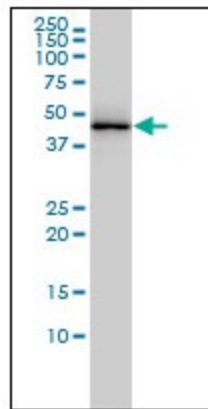
TDP43, TDP-43

Protein Families:

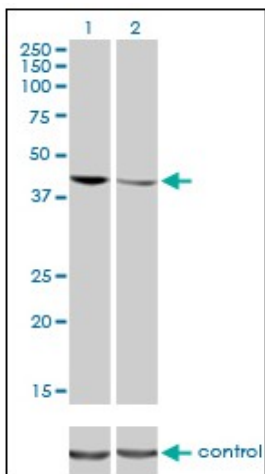
Transcription Factors

Product images:


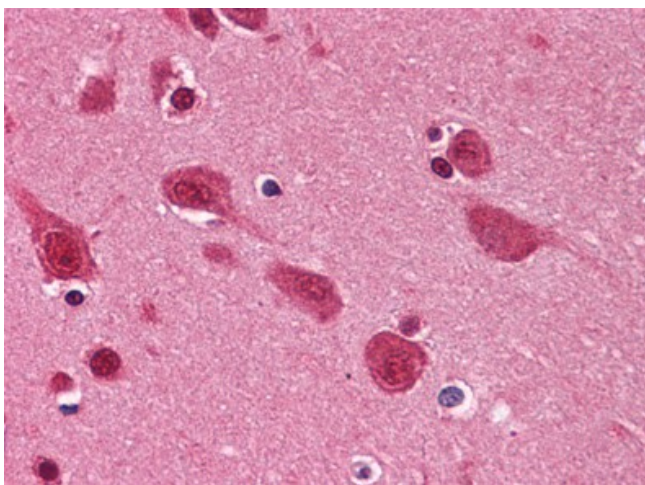
Western Blot analysis of TARDBP expression in transfected 293T cell line by TARDBP monoclonal antibody clone 2E2-D3.



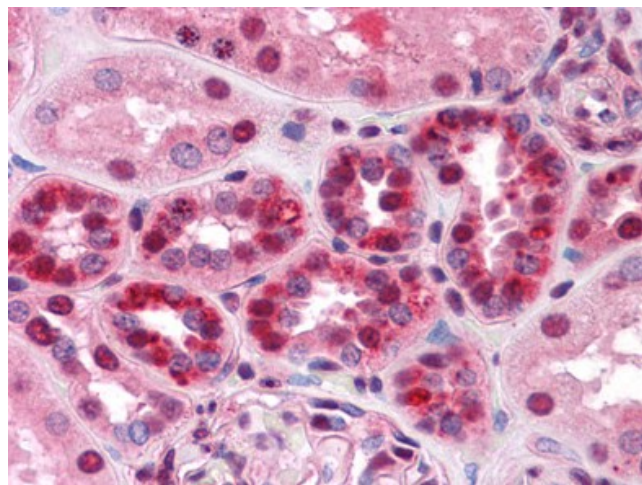
TARDBP monoclonal antibody clone 2E2-D3
Western Blot analysis of TARDBP expression in A-431.



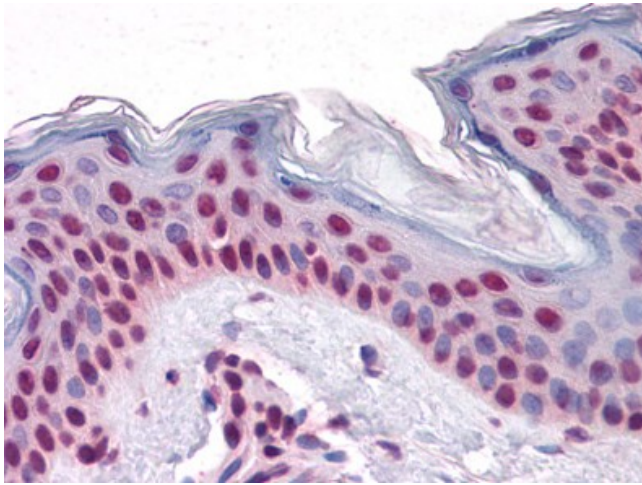
Western blot analysis of TARDBP over-expressed 293 cell line, cotransfected with TARDBP Validated Chimera RNAi (Lane 2) or non-transfected control (Lane 1). Blot probed with TARDBP monoclonal antibody clone 2E2-D3.



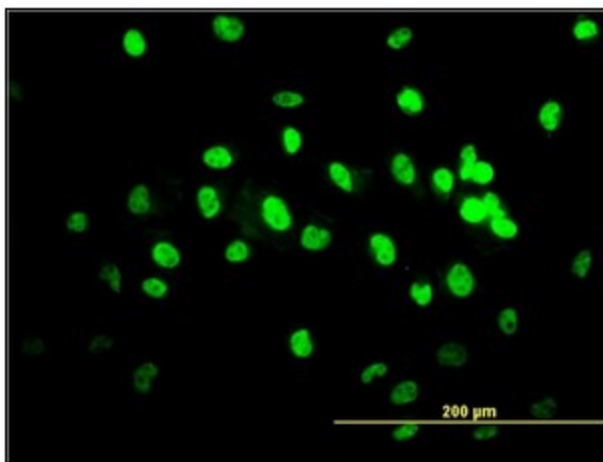
Human Brain, Cortex: Formalin-Fixed, Paraffin-Embedded (FFPE)



Human Kidney: Formalin-Fixed, Paraffin-Embedded (FFPE)



Human Skin: Formalin-Fixed, Paraffin-Embedded (FFPE)



Immunofluorescence of monoclonal antibody to TARDBP on HeLa cell (antibody concentration 10 ug/ml).