

Product datasheet for **AM20992PU-N**

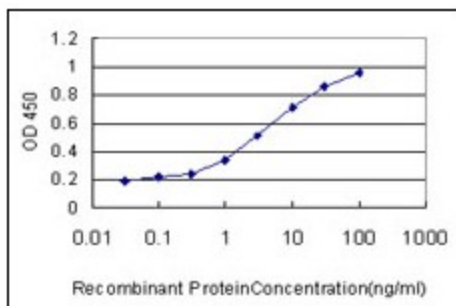
ARHGEF14 (MCF2L) Mouse Monoclonal Antibody [Clone ID: 1D11]

Product data:

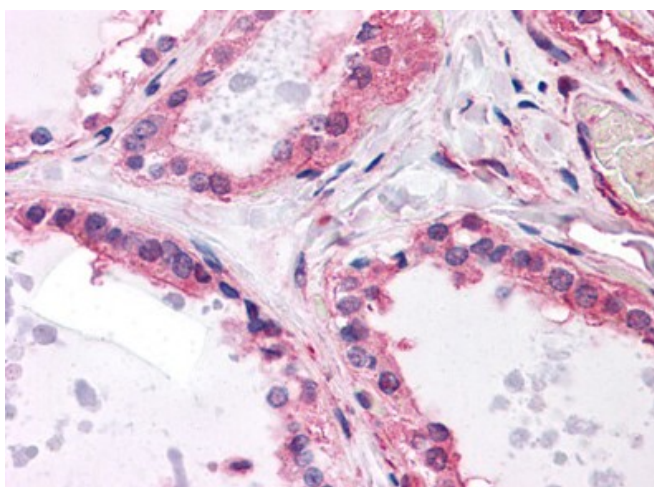
Product Type:	Primary Antibodies
Clone Name:	1D11
Applications:	ELISA, IHC, WB
Recommended Dilution:	ELISA. Immunohistochemistry on Paraffin Sections: 5 µg/ml. Western Blot.
Reactivity:	Human
Host:	Mouse
Isotype:	IgG1
Clonality:	Monoclonal
Immunogen:	Recombinant protein, MCF2L (AAH20208, 220 a.a. ~ 320 a.a) partial recombinant protein with GST tag. MW of the GST tag alone is 26 KDa.
Specificity:	This antibody reacts to MCF.2 Cell Line Derived Transforming Sequence-like (MCF2L).
Formulation:	PBS, pH 7.2 State: Liquid purified Ig fraction
Concentration:	lot specific
Purification:	Protein A Chromatography
Conjugation:	Unconjugated
Storage:	Store the antibody at -20°C. Avoid repeated freezing and thawing.
Stability:	Shelf life: one year from despatch.
Gene Name:	MCF.2 cell line derived transforming sequence like
Database Link:	Entrez Gene 23263 Human O15068
Synonyms:	KIAA0362, DBL's big sister



[View online »](#)

Product images:

Detection limit for recombinant GST tagged MCF2L is approximately 0.03 ng/ml as a capture antibody.



Human Thyroid: Formalin-Fixed, Paraffin-Embedded (FFPE)