

Product datasheet for **AM20991PU-N**

KPI2 (LMTK2) Mouse Monoclonal Antibody [Clone ID: 3G1]

Product data:

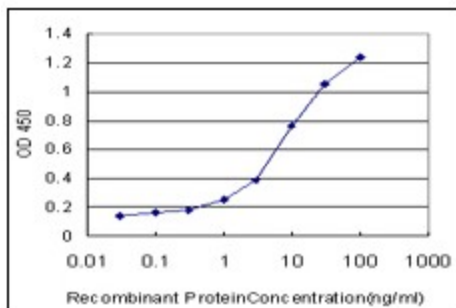
Product Type:	Primary Antibodies
Clone Name:	3G1
Applications:	ELISA, IHC, WB
Recommended Dilution:	ELISA. Immunohistochemistry on Paraffin Sections: 5 µg/ml. Western Blot.
Reactivity:	Human
Host:	Mouse
Isotype:	IgG2b
Clonality:	Monoclonal
Immunogen:	LMTK2 antibody was raised against IMTK2 (NP_055731, 1181 a.a. ~ 1280 a.a) partial recombinant protein with GST tag. MW of the GST tag alone is 26 KDa.
Specificity:	This antibody reacts to Protein Kinase KIAA1079 (LMTK2).
Formulation:	PBS, pH 7.4 State: Liquid purified Ig fraction
Concentration:	lot specific
Purification:	Protein A Chromatography
Conjugation:	Unconjugated
Storage:	Upon receipt, store undiluted (in aliquots) at -20°C. Avoid repeated freezing and thawing.
Stability:	Shelf life: one year from despatch.
Gene Name:	lemur tyrosine kinase 2
Database Link:	Entrez Gene 22853 Human Q8IWU2
Synonyms:	LMTK2, AATYK2, BREK, KIAA1079, KPI2, LMR2, Serine/threonine-protein kinase LMTK2, EC=2.7.11.1, Lemur tyrosine kinase 2, Brain-enriched kinase, CDK5/p35-regulated kinase, CPRK



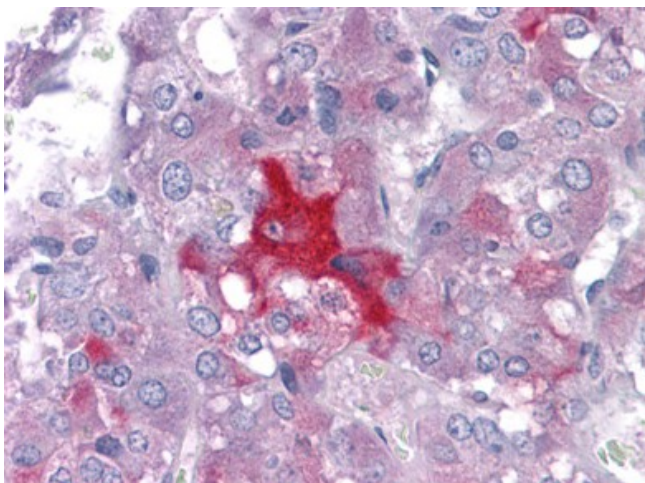
[View online »](#)

Protein Families: Druggable Genome, Protein Kinase, Transmembrane

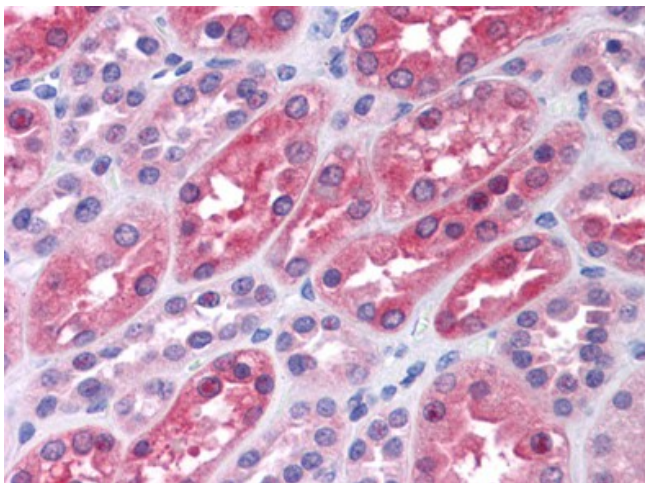
Product images:



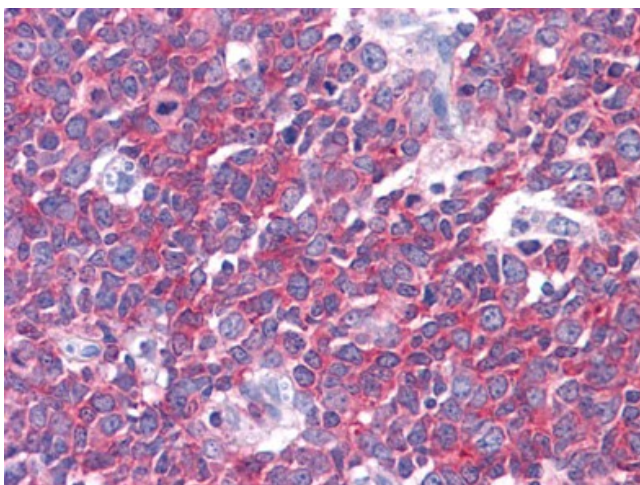
Detection limit for recombinant GST tagged LMTK2 is approximately 0.1 ng/ml as a capture antibody.



Human Adrena: Formalin-Fixed, Paraffin-Embedded (FFPE)



Human Kidney: Formalin-Fixed, Paraffin-Embedded (FFPE)



Human Tonsil: Formalin-Fixed, Paraffin-Embedded (FFPE)