

Product datasheet for **AM20987PU-N**

LST1 Mouse Monoclonal Antibody [Clone ID: LST1/02]

Product data:

Product Type:	Primary Antibodies
Clone Name:	LST1/02
Applications:	IF, IHC, IP, WB
Recommended Dilution:	Immunocytochemistry. Immunohistochemistry on Paraffin Sections: 10 µg/ml. Immunoprecipitation. Western Blot.
Reactivity:	Human
Host:	Mouse
Isotype:	IgG1
Clonality:	Monoclonal
Immunogen:	Synthetic peptide - KLH conjugated, Peptide corresponding to amino acids SSEGPDLRGRDKRGT of human LST1.
Specificity:	This antibody reacts with an extracellular epitope of LST1, an approximately 6-11 kD protein expressed as various transmembrane or soluble forms. LST1 is found predominantly on monocytes and dendritic cells. It migrates on SDS PAGE gels as approximately 25-28 kD molecule.
Formulation:	PBS, 15 mM sodium azide, pH 7.4 State: Liquid purified Ig fraction
Concentration:	lot specific
Purification:	Protein A Chromatography
Conjugation:	Unconjugated
Storage:	Store the antibody undiluted at 2-8°C for one month or (in aliquots) at -20°C for longer. Avoid repeated freezing and thawing.
Stability:	Shelf life: one year from despatch.
Gene Name:	leukocyte specific transcript 1
Database Link:	Entrez Gene 7940 Human O00453

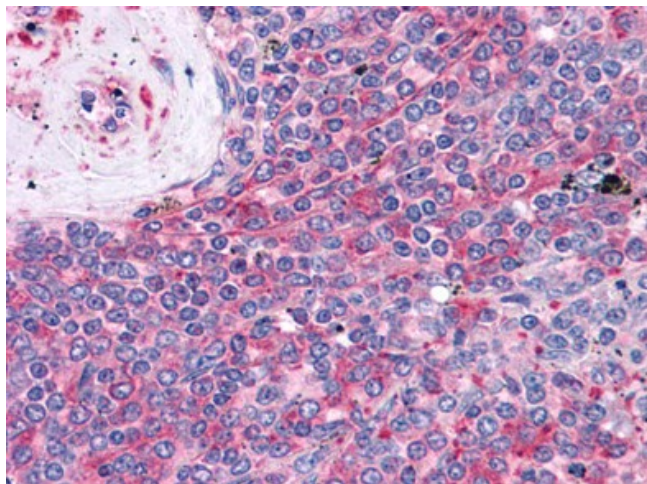


[View online »](#)

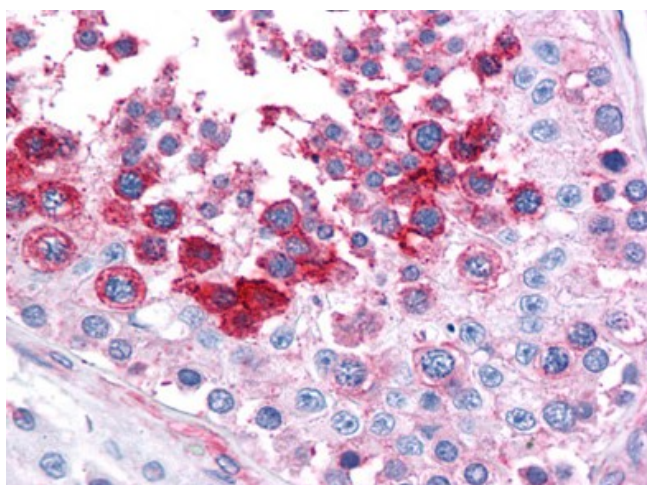
Synonyms: B144; D6S49E; LST-1; MGC119006; MGC119007

Protein Families: Transmembrane

Product images:



Human Spleen: Formalin-Fixed, Paraffin-Embedded (FFPE)



Human Testis: Formalin-Fixed, Paraffin-Embedded (FFPE)