

## Product datasheet for **AM20985PU-N**

### GMEB1 Mouse Monoclonal Antibody [Clone ID: 2A8]

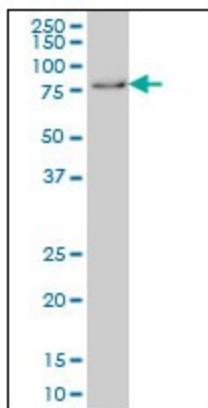
#### Product data:

Product Type:	Primary Antibodies
Clone Name:	2A8
Applications:	ELISA, IF, IHC, WB
Recommended Dilution:	<b>ELISA.</b> <b>Immunofluorescence:</b> 10 µg/ml. <b>Immunohistochemistry on Paraffin Sections:</b> 5 µg/ml. <b>Western Blot.</b>
Reactivity:	Human
Host:	Mouse
Isotype:	IgG2a
Clonality:	Monoclonal
Immunogen:	Recombinant protein, GMEB1 (NP_077808, 467 a.a. ~ 564 a.a) partial recombinant protein with GST tag. MW of the GST tag alone is 26 KDa.
Specificity:	This antibody reacts to Glucocorticoid Modulatory Element Binding Protein 1 (GMEB1).
Formulation:	PBS, pH 7.2 State: Liquid purified Ig fraction
Purification:	Protein A Chromatography
Conjugation:	Unconjugated
Storage:	Store the antibody at -20°C. Avoid repeated freezing and thawing.
Stability:	Shelf life: one year from despatch.
Gene Name:	glucocorticoid modulatory element binding protein 1
Database Link:	<a href="#">Entrez Gene 10691 Human Q9Y692</a>
Synonyms:	p96PIF, PIF-p96, GMEB-1
Protein Families:	Druggable Genome, Transcription Factors

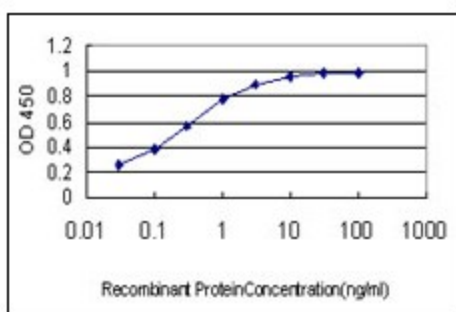


[View online »](#)

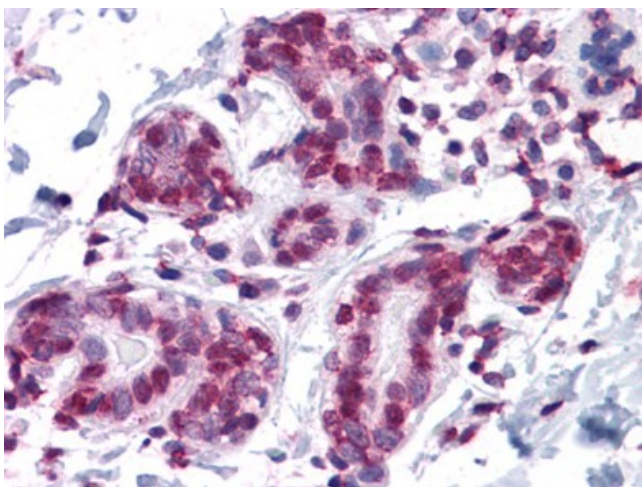
Product images:



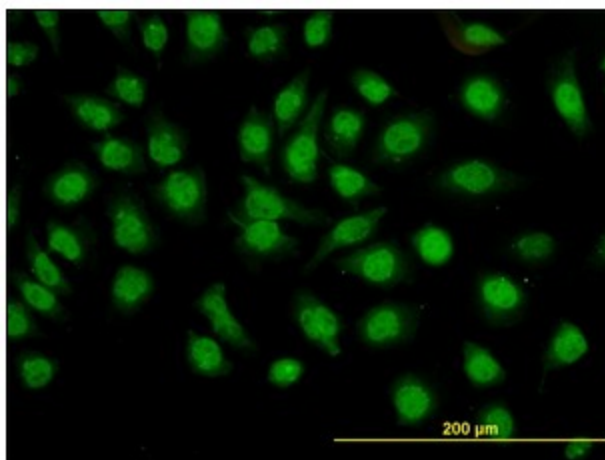
GMEB1 monoclonal antibody clone 2A8 Western Blot analysis of GMEB1 expression in HeLa NE.



Detection limit for recombinant GST tagged GMEB1 is approximately 0.03 ng/ml as a capture antibody.



Human Breast: Formalin-Fixed, Paraffin-Embedded (FFPE)



Immunofluorescence of monoclonal antibody to GMEB1 on HeLa cell (antibody concentration 10 ug/ml).