

Product datasheet for **AM20980PU-N**

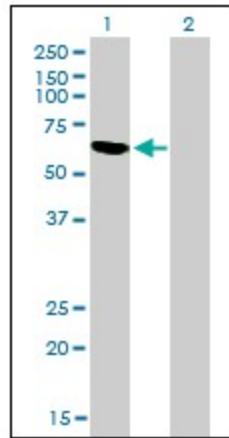
RBM5 Mouse Monoclonal Antibody [Clone ID: 2B6]

Product data:

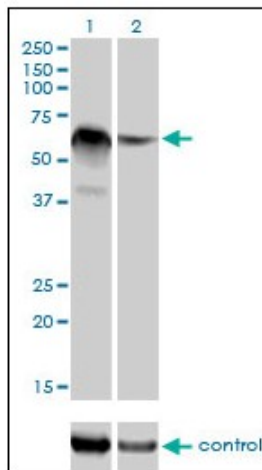
Product Type:	Primary Antibodies
Clone Name:	2B6
Applications:	ELISA, IHC, RNAi, WB
Recommended Dilution:	ELISA. Immunohistochemistry on Paraffin Sections: 5 µg/ml. RNAi. Western Blot: 1/500 - 1/1000.
Reactivity:	Human
Host:	Mouse
Isotype:	IgG2a
Clonality:	Monoclonal
Immunogen:	Recombinant protein, RBM5 (AAH02957, 75 a.a. ~ 184 a.a) partial recombinant protein with GST tag. MW of the GST tag alone is 26 KDa.
Specificity:	This antibody reacts to Putative Tumor Suppressor Luca15 (RBM5).
Formulation:	PBS, pH 7.2 State: Liquid purified Ig fraction
Concentration:	lot specific
Purification:	Protein A Chromatography
Conjugation:	Unconjugated
Storage:	Store the antibody at -20°C. Avoid repeated freezing and thawing.
Stability:	Shelf life: one year from despatch.
Gene Name:	RNA binding motif protein 5
Database Link:	Entrez Gene 10181 Human P52756
Synonyms:	RNA-binding protein 5, NY-REN-9
Protein Families:	Druggable Genome



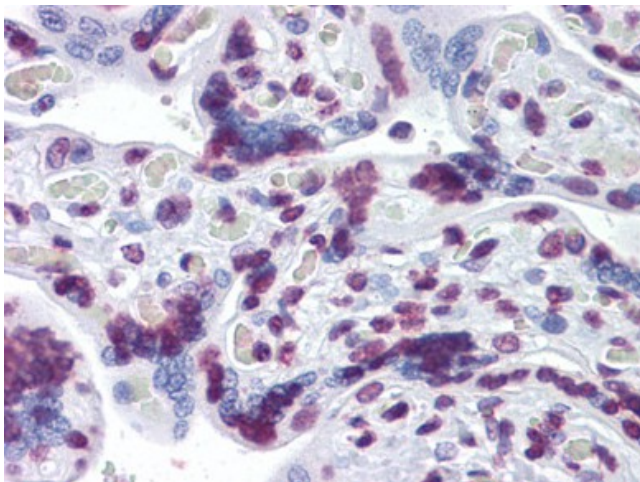
[View online »](#)

Product images:


Western Blot analysis of RBM5 expression in transfected 293T cell line by RBM5 monoclonal antibody clone 2B6.



Western blot analysis of RBM5 over-expressed 293 cell line, cotransfected with RBM5 Validated Chimera RNAi (Lane 2) or non-transfected control (Lane 1). Blot probed with RBM5 monoclonal antibody clone 2B6.



Human Placenta: Formalin-Fixed, Paraffin-Embedded (FFPE)

