

## Product datasheet for **AM20979PU-N**

### **G3BP (G3BP1) Mouse Monoclonal Antibody [Clone ID: 2F3]**

#### **Product data:**

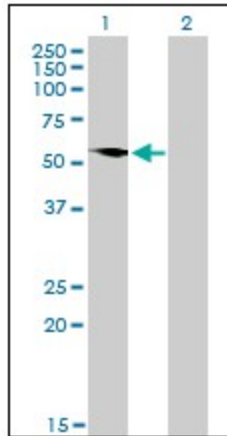
|                       |   |
|-----------------------|---|
| Product Type:         | Primary Antibodies  |
| Clone Name:           | 2F3   |
| Applications:         | ELISA, IF, IHC, RNAi, WB  |
| Recommended Dilution: | <b>ELISA.</b><br><b>Immunofluorescence:</b> 10 µg/ml.<br><b>Immunohistochemistry on Paraffin Sections:</b> 5 µg/ml.<br><b>RNAi.</b><br><b>Western Blot.</b> |
| Reactivity:           | Human   |
| Host:                 | Mouse   |
| Isotype:              | IgG1  |
| Clonality:            | Monoclonal  |
| Immunogen:            | Recombinant protein, G3BP (AAH06997, 214 a.a. ~ 303 a.a) partial recombinant protein with GST tag. MW of the GST tag alone is 26 KDa.                       |
| Specificity:          | This antibody reacts to GAP SH3 Binding Protein (G3BP1).  |
| Formulation:          | PBS, pH 7.2<br>State: Liquid purified Ig fraction   |
| Concentration:        | lot specific  |
| Purification:         | Protein A Chromatography  |
| Conjugation:          | Unconjugated  |
| Storage:              | Store the antibody at -20°C.<br>Avoid repeated freezing and thawing.  |
| Stability:            | Shelf life: one year from despatch.   |
| Gene Name:            | G3BP stress granule assembly factor 1   |
| Database Link:        | <a href="#">Entrez Gene 10146 Human Q13283</a>  |
| Synonyms:             | G3BP-1, hDH VIII  |



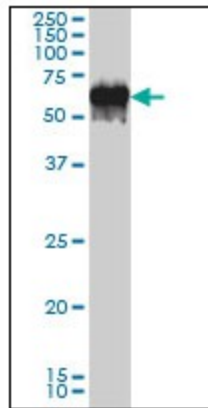
[View online »](#)

Protein Families: Druggable Genome

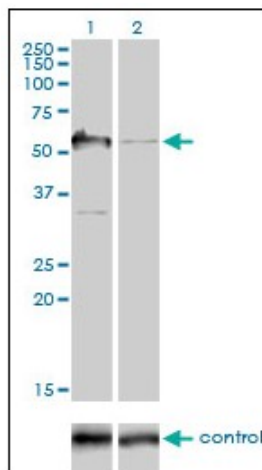
**Product images:**



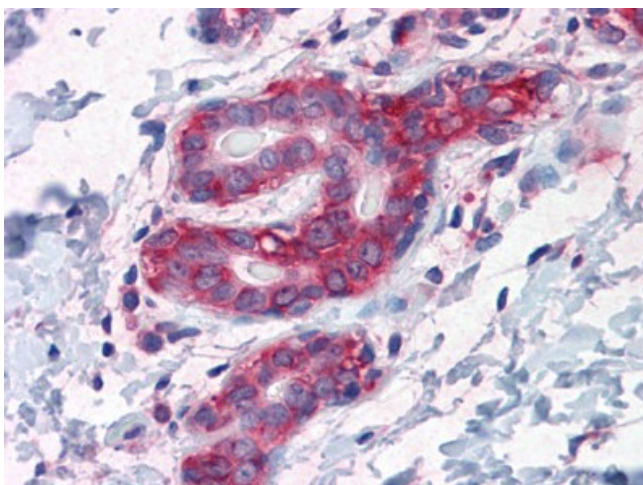
Western Blot analysis of G3BP expression in transfected 293T cell line by G3BP monoclonal antibody clone 2F3.



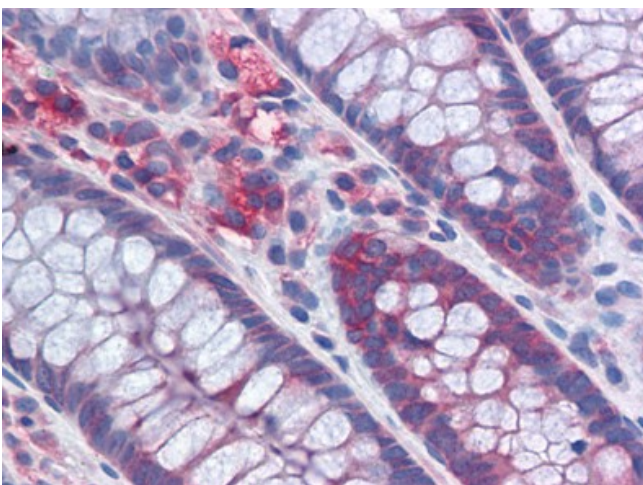
G3BP monoclonal antibody clone 2F3 Western Blot analysis of G3BP expression in A-431.



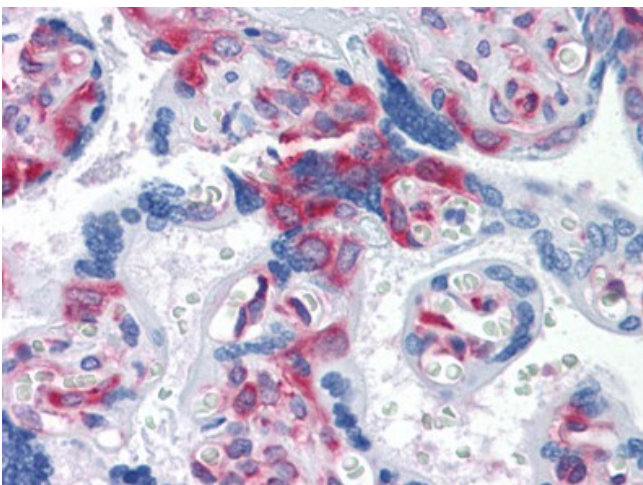
Western blot analysis of G3BP over-expressed 293 cell line, cotransfected with G3BP Validated Chimera RNAi (Lane 2) or non-transfected control (Lane 1). Blot probed with G3BP monoclonal antibody clone 2F3



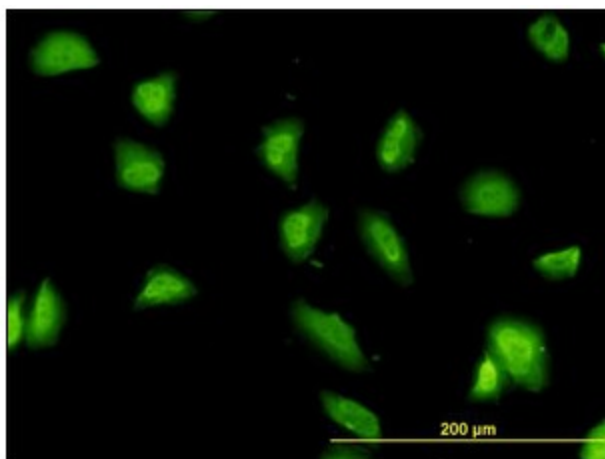
Human Breast: Formalin-Fixed, Paraffin-Embedded (FFPE)



Human Colon: Formalin-Fixed, Paraffin-Embedded (FFPE)



Human Placenta: Formalin-Fixed, Paraffin-Embedded (FFPE)



Immunofluorescence of monoclonal antibody to G3BP on HeLa cell (antibody concentration 10 ug/ml).