

Product datasheet for **AM20975PU-N**

NR1D1 Mouse Monoclonal Antibody [Clone ID: 4F6]

Product data:

Product Type:	Primary Antibodies
Clone Name:	4F6
Applications:	ELISA, IF, IHC, RNAi, WB
Recommended Dilution:	ELISA. Immunofluorescence: 10 µg/ml. Immunohistochemistry on Paraffin Sections: 5 µg/ml. RNAi. Western Blot.
Reactivity:	Human, Mouse
Host:	Mouse
Isotype:	IgG1
Clonality:	Monoclonal
Immunogen:	Recombinant protein, NR1D1 (AAH56148, 1 a.a. ~ 615 a.a) full length recombinant protein with GST tag. MW of the GST tag alone is 26 KDa.
Specificity:	This antibody recognizes Nuclear Receptor Rev-Erba Alpha (NR1D1).
Formulation:	PBS, pH 7.2 State: Liquid purified Ig fraction
Concentration:	lot specific
Purification:	Protein A Chromatography
Conjugation:	Unconjugated
Storage:	Store undiluted at 2-8°C for one month or (in aliquots) at -20°C for longer. Avoid repeated freezing and thawing.
Stability:	Shelf life: one year from despatch.
Gene Name:	nuclear receptor subfamily 1 group D member 1
Database Link:	Entrez Gene 217166 Mouse Entrez Gene 9572 Human P20393



[View online »](#)

Background:

Rev-erbA alpha, a NR1 Thyroid Hormone-Like Receptor, is encoded by the same genomic locus as, but transcribed from the opposite strand of, Thyroid Hormone Receptor Alpha (TR Alpha). Rev-erbA alpha is a target of Nuclear Receptor ROR Alpha (Delerive et al. 2002), and a transcription regulator that has been shown to affect myocyte differentiation, adipogenesis, and lipoprotein metabolism. Recently Rev-erbA alpha has been shown to affect circadian rhythms by regulating cyclic Bmal1 transcription (Preitner et al. 2002, Ueda et al. 2002). Mice lacking Rev-erbA alpha show abnormal postnatal cerebellar development.

Synonyms:

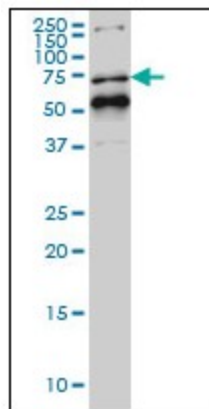
EAR1, HREV, THRAL

Protein Families:

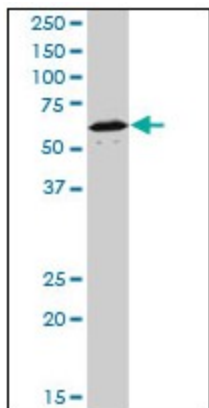
Druggable Genome, Nuclear Hormone Receptor, Transcription Factors

Protein Pathways:

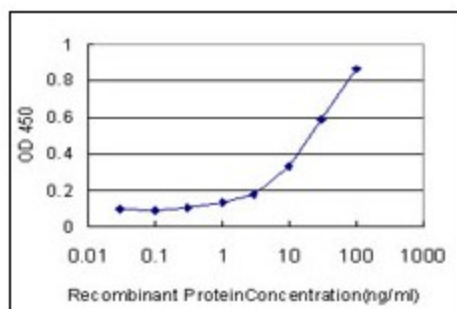
Circadian rhythm - mammal

Product images:

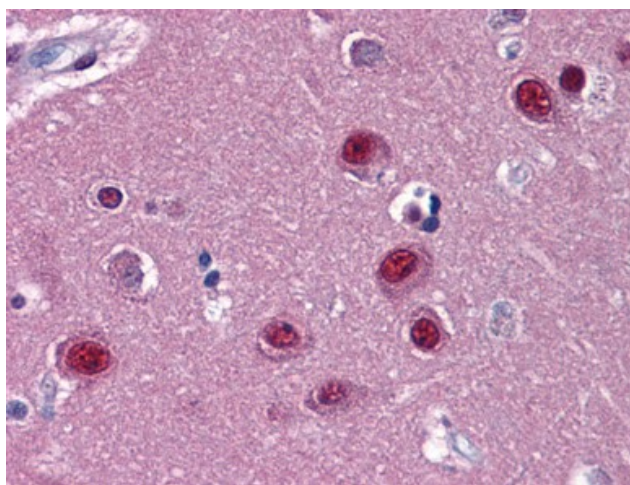
NR1D1 monoclonal antibody clone 4F6 Western Blot analysis of NR1D1 expression in HeLa NE.



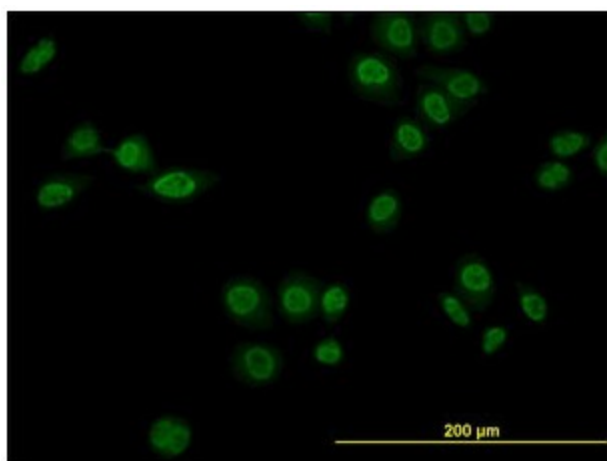
NR1D1 monoclonal antibody, clone 4F6. Western Blot analysis of NR1D1 expression in NIH/3T3.



Detection limit for recombinant GST tagged NR1D1 is approximately 1 ng/ml as a capture antibody.



Human Brain, Cortex: Formalin-Fixed, Paraffin-Embedded (FFPE)



Immunofluorescence of monoclonal antibody to NR1D1 on HeLa cell (antibody concentration 10 ug/ml).