

## Product datasheet for **AM20972PU-N**

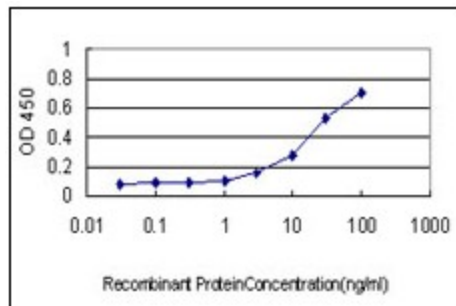
### Cytohesin 1 (CYTH1) Mouse Monoclonal Antibody [Clone ID: 1D6]

#### Product data:

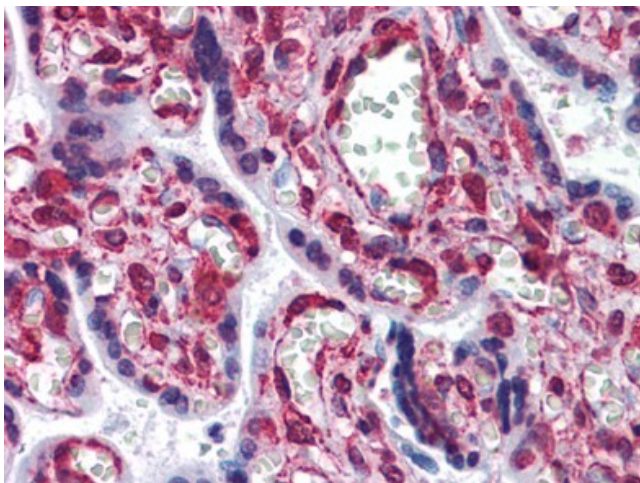
Product Type:	Primary Antibodies
Clone Name:	1D6
Applications:	ELISA, IF, IHC, WB
Recommended Dilution:	<b>ELISA.</b> <b>Immunofluorescence:</b> 10 µg/ml. <b>Immunohistochemistry on Paraffin Sections:</b> 5 µg/ml. <b>Western Blot:</b> 1/500 - 1/1000.
Reactivity:	Human
Host:	Mouse
Isotype:	IgG1
Clonality:	Monoclonal
Immunogen:	Recombinant protein, PSCD1 (AAH50452, 1 a.a. ~ 399 a.a) full length recombinant protein with GST tag. MW of the GST tag alone is 26 KDa.
Specificity:	This antibody reacts to Cytohesin 1 (CYTH1).
Formulation:	PBS, pH 7.2 State: Liquid purified Ig fraction
Purification:	Protein A Chromatography
Conjugation:	Unconjugated
Storage:	Store the antibody at -20°C. Avoid repeated freezing and thawing.
Stability:	Shelf life: one year from despatch.
Gene Name:	cytohesin 1
Database Link:	<a href="#">Entrez Gene 9267 Human Q15438</a>
Synonyms:	CYTH1, D17S811E, PSCD1, SEC7 homolog B2-1



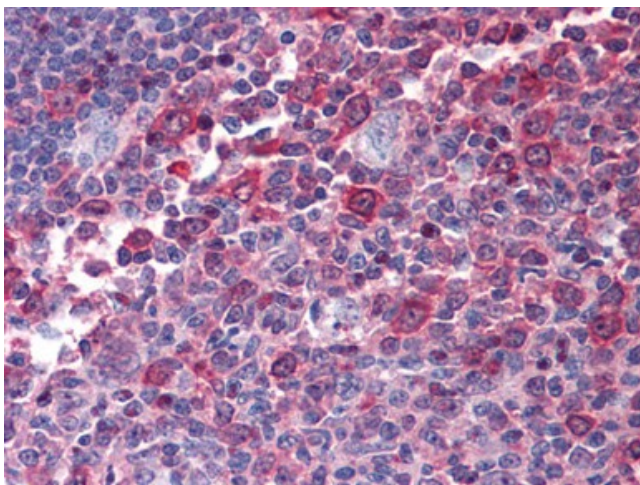
[View online »](#)

**Product images:**

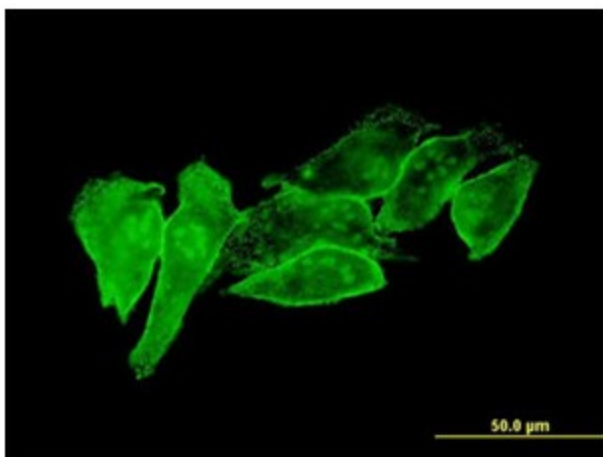
Detection limit for recombinant GST tagged PSCD1 is approximately 1 ng/ml as a capture antibody.



Human Placenta: Formalin-Fixed, Paraffin-Embedded (FFPE)



Human Tonsil: Formalin-Fixed, Paraffin-Embedded (FFPE)



Immunofluorescence of monoclonal antibody to PSCD1 on HeLa cell (antibody concentration 10 ug/ml).