

## Product datasheet for **AM20970PU-N**

### **FAM50A Mouse Monoclonal Antibody [Clone ID: 5F10]**

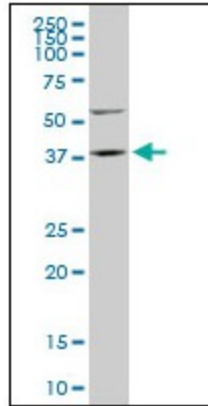
#### **Product data:**

Product Type:	Primary Antibodies
Clone Name:	5F10
Applications:	ELISA, IHC, WB
Recommended Dilution:	<b>ELISA.</b> <b>Immunohistochemistry on Paraffin Sections:</b> 5 µg/ml. <b>Western Blot.</b>
Reactivity:	Human, Rat
Host:	Mouse
Isotype:	IgG2a
Clonality:	Monoclonal
Immunogen:	Recombinant protein, FAM50A (NP_004690, 1 a.a. ~ 89 a.a) partial recombinant protein with GST tag. MW of the GST tag alone is 26 KDa.
Specificity:	This antibody reacts to Family With Sequence Similarity 50A (FAM50A).
Formulation:	PBS, pH 7.2 State: Liquid purified Ig fraction
Purification:	Protein A Chromatography
Conjugation:	Unconjugated
Storage:	Store the antibody at -20°C. Avoid repeated freezing and thawing.
Stability:	Shelf life: one year from despatch.
Gene Name:	family with sequence similarity 50 member A
Database Link:	<a href="#">Entrez Gene 293862 Rat</a> <a href="#">Entrez Gene 9130 Human Q14320</a>
Synonyms:	DXS9928E, HXC26, XAP5

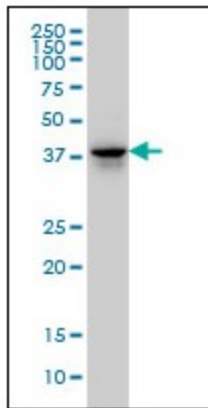


[View online »](#)

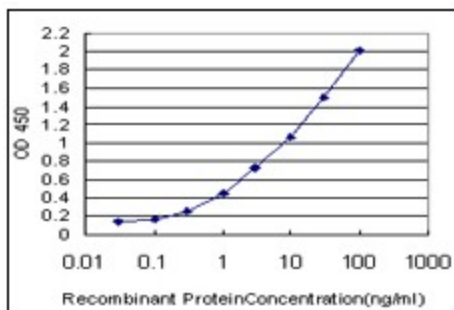
Product images:



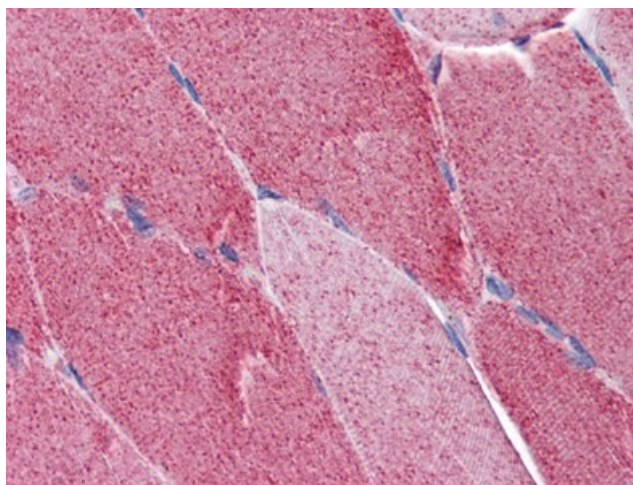
FAM50A monoclonal antibody, clone 5F10.  
Western Blot analysis of FAM50A expression in PC-12.



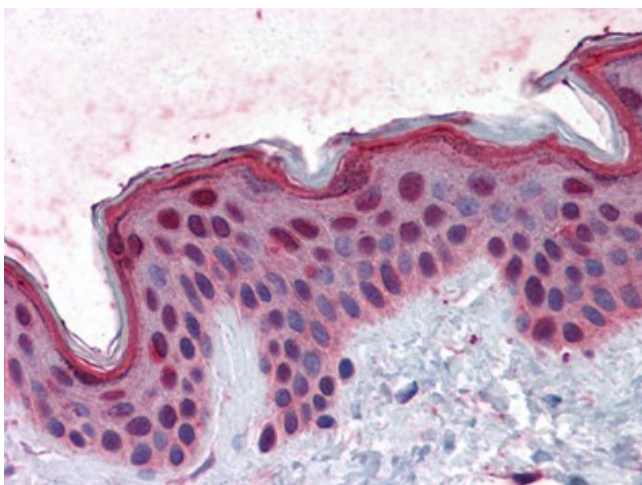
FAM50A monoclonal antibody, clone 5F10  
Western Blot analysis of FAM50A expression in HeLa NE.



Detection limit for recombinant GST tagged FAM50A is approximately 0.1 ng/ml as a capture antibody.



Human Skeletal Muscle: Formalin-Fixed, Paraffin-Embedded (FFPE)



Human Skin: Formalin-Fixed, Paraffin-Embedded (FFPE)