

Product datasheet for **AM20969PU-N**

Claudin 1 (CLDN1) (full length) Mouse Monoclonal Antibody [Clone ID: 1C5-D9]

Product data:

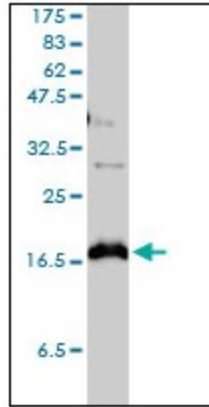
Product Type:	Primary Antibodies
Clone Name:	1C5-D9
Applications:	ELISA, IHC, WB
Recommended Dilution:	ELISA. Immunohistochemistry on Paraffin Sections: 5 µg/ml. Western Blot.
Reactivity:	Human
Host:	Mouse
Isotype:	IgG2a
Clonality:	Monoclonal
Immunogen:	CLDN1 (AAH12471, 1 a.a. ~ 212 a.a) full length recombinant protein with GST tag. MW of the GST tag alone is 26 KDa.
Specificity:	This antibody reacts to Human Claudin 1 (CLDN1).
Formulation:	PBS, pH 7.4 State: Purified State: Liquid purified Ig fraction
Concentration:	lot specific
Purification:	Protein A chromatography
Conjugation:	Unconjugated
Storage:	Store the antibody in aliquots at -20°C. Avoid repeated freezing and thawing.
Stability:	Shelf life: one year from despatch.
Gene Name:	claudin 1
Database Link:	Entrez Gene 9076 Human O95832
Synonyms:	CLD1, SEMP1, PRO944, UNQ481
Protein Families:	Transmembrane



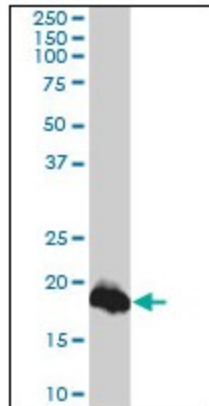
[View online »](#)

Protein Pathways: Cell adhesion molecules (CAMs), Leukocyte transendothelial migration, Pathogenic Escherichia coli infection, Tight junction

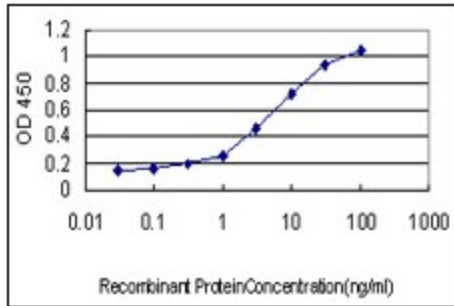
Product images:



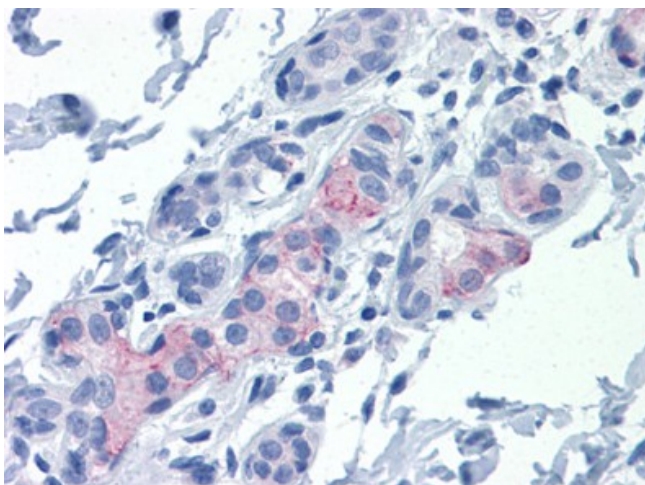
CLDN1 monoclonal antibody, clone 1C5-D9. Western Blot analysis of CLDN1 expression in PRC/PRF/5.



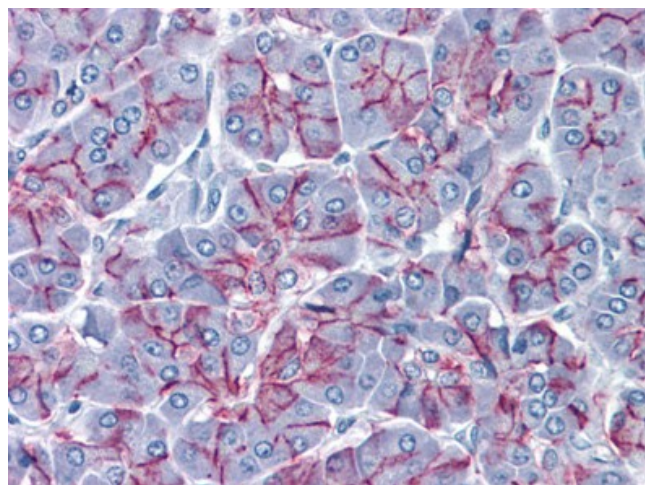
CLDN1 monoclonal antibody, clone 1C5-D9. Western Blot analysis of CLDN1 expression in A-431.



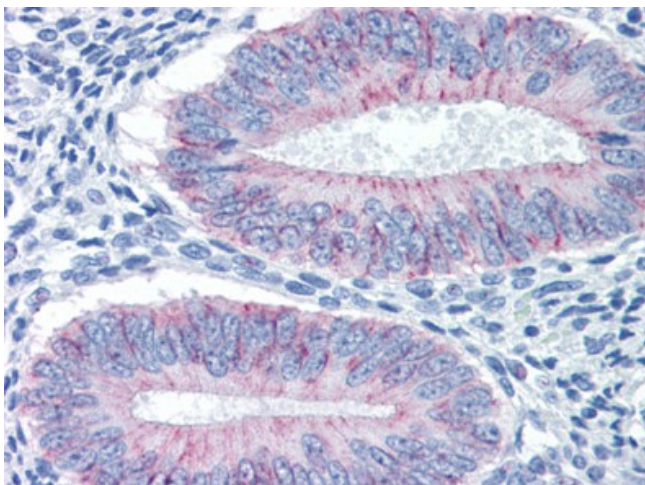
Detection limit for recombinant GST tagged CLDN1 is approximately 0.03 ng/ml as a capture antibody.



Human Breast: Formalin-Fixed, Paraffin-Embedded (FFPE)



Human Pancreas: Formalin-Fixed, Paraffin-Embedded (FFPE)



Human Uterus: Formalin-Fixed, Paraffin-Embedded (FFPE)