

Product datasheet for **AM20968PU-N**

CDKL2 Mouse Monoclonal Antibody [Clone ID: 1F6]

Product data:

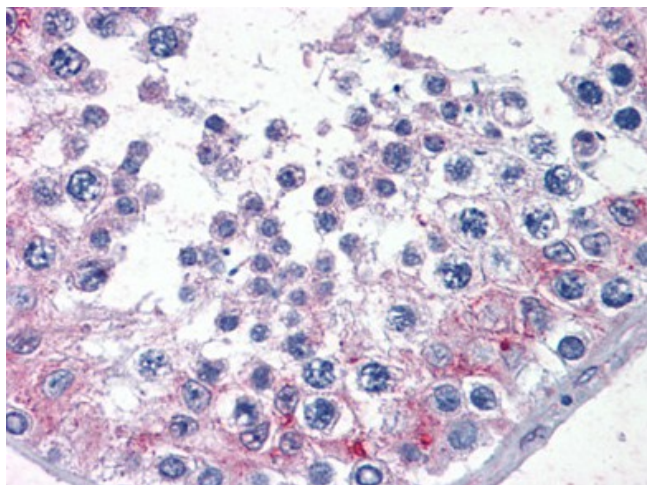
Product Type:	Primary Antibodies
Clone Name:	1F6
Applications:	ELISA, IHC, WB
Recommended Dilution:	ELISA. Immunohistochemistry on Paraffin Sections: 5 µg/ml. Western Blot.
Reactivity:	Human
Host:	Mouse
Isotype:	IgG1
Clonality:	Monoclonal
Immunogen:	Recombinant protein, CDKL2 (NP_003939, 394 a.a. ~ 493 a.a) partial recombinant protein with GST tag. MW of the GST tag alone is 26 KDa.
Specificity:	This antibody reacts to Cyclin-dependent Kinase-like 2 (CDKL2).
Formulation:	PBS, pH 7.2 State: Liquid purified Ig fraction
Purification:	Protein A Chromatography
Conjugation:	Unconjugated
Storage:	Store the antibody at -20°C. Avoid repeated freezing and thawing.
Stability:	Shelf life: one year from despatch.
Gene Name:	cyclin dependent kinase like 2
Database Link:	Entrez Gene 8999 Human Q92772
Background:	CDKL2 belongs to the CDKL subfamily. CDKL2 has been suggested to be important in learning and memory. Multiple variants of CDKL2 are generated by alternative splicing and intraexonal termination, resulting in diverse carboxy-terminal regulatory domains. Two alternative promoters linked to distinct noncoding exons direct the expression of KKIAMRE.
Synonyms:	KKIAMRE



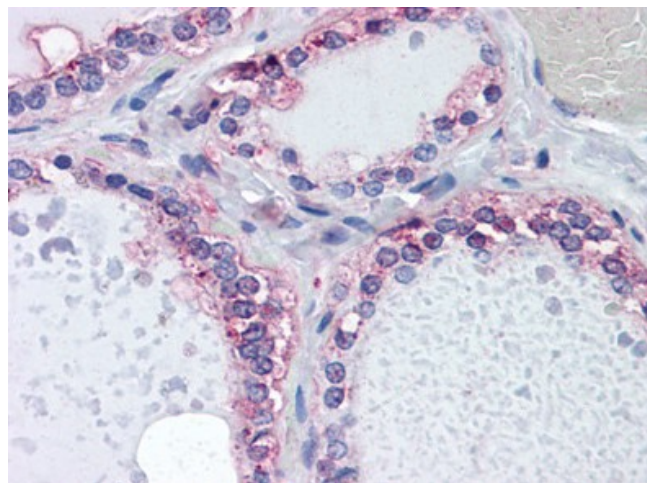
[View online »](#)

Protein Families: Druggable Genome, Protein Kinase

Product images:



Testis: Formalin-Fixed, Paraffin-Embedded (FFPE)



Human Thyroid: Formalin-Fixed, Paraffin-Embedded (FFPE)