

Product datasheet for **AM20966PU-N**

GMP Synthase (GMPS) Mouse Monoclonal Antibody [Clone ID: 1D10]

Product data:

Product Type:	Primary Antibodies
Clone Name:	1D10
Applications:	ELISA, IHC, WB
Recommended Dilution:	ELISA. Immunohistochemistry on Paraffin Sections: 5 µg/ml. Western Blot.
Reactivity:	Human
Host:	Mouse
Isotype:	IgG1
Clonality:	Monoclonal
Immunogen:	Recombinant protein, GMPS (NP_003866, 108 a.a. ~ 216 a.a) partial recombinant protein with GST tag. MW of the GST tag alone is 26 KDa.
Specificity:	This antibody reacts to Gmp Synthase (GMPS).
Formulation:	PBS, pH 7.2 State: Liquid purified Ig fraction
Concentration:	lot specific
Purification:	Protein A Chromatography
Conjugation:	Unconjugated
Storage:	Store the antibody at -20°C. Avoid repeated freezing and thawing.
Stability:	Shelf life: one year from despatch.
Gene Name:	guanine monophosphate synthase
Database Link:	Entrez Gene 8833 Human P49915



[View online »](#)

Background:

In the de novo synthesis of purine nucleotides, IMP is the branch point metabolite at which point the pathway diverges to the synthesis of either guanine or adenine nucleotides. In the guanine nucleotide pathway, there are 2 enzymes involved in converting IMP to GMP, namely IMP dehydrogenase (IMPD1), which catalyzes the oxidation of IMP to XMP, and GMP synthetase, which catalyzes the amination of XMP to GMP.

Synonyms:

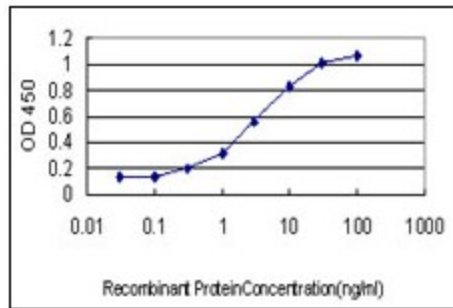
Glutamine amidotransferase

Protein Families:

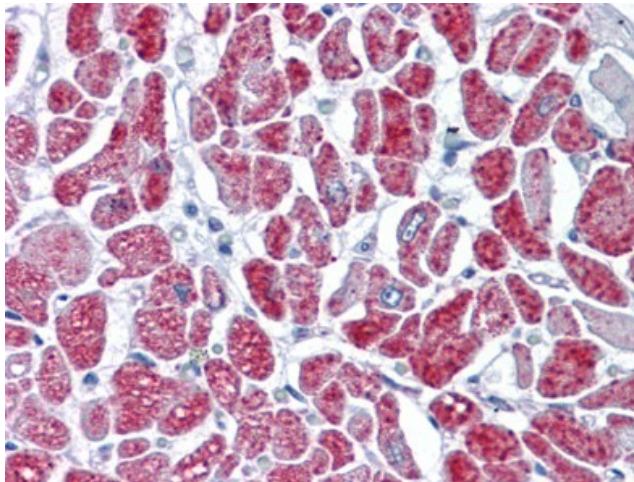
Stem cell - Pluripotency

Protein Pathways:

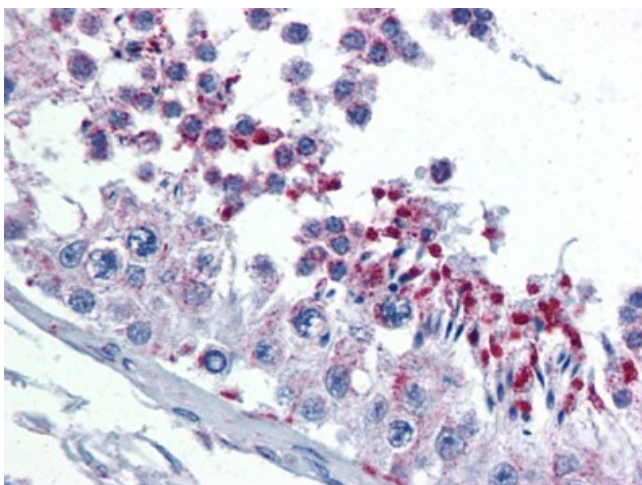
Drug metabolism - other enzymes, Metabolic pathways, Purine metabolism

Product images:

Detection limit for recombinant GST tagged GMPS is approximately 0.1 ng/ml as a capture antibody.



Human Heart: Formalin-Fixed, Paraffin-Embedded (FFPE)



Human Testis: Formalin-Fixed, Paraffin-Embedded (FFPE)