

Product datasheet for **AM20964PU-N**

BANF1 Mouse Monoclonal Antibody [Clone ID: 3F10-4G12]

Product data:

Product Type:	Primary Antibodies
Clone Name:	3F10-4G12
Applications:	ELISA, IHC, WB
Recommended Dilution:	ELISA. Immunohistochemistry on Paraffin Sections: 5 µg/ml. Western Blot.
Reactivity:	Human
Host:	Mouse
Isotype:	IgG2a
Clonality:	Monoclonal
Immunogen:	Recombinant protein, BANF1 (AAH05942, 1 a.a. ~ 90 a.a) full length recombinant protein with GST tag. MW of the GST tag alone is 26 KDa.
Specificity:	This antibody reacts to Breakpoint Cluster Region Protein, Uterine Leiomyoma, 1; Barrier To Autointegration Factor (BCRP1) (BANF1).
Formulation:	PBS, pH 7.2 State: Liquid purified Ig fraction
Purification:	Protein A Chromatography
Conjugation:	Unconjugated
Storage:	Store the antibody at -20°C. Avoid repeated freezing and thawing.
Stability:	Shelf life: one year from despatch.
Gene Name:	barrier to autointegration factor 1
Database Link:	Entrez Gene 8815 Human O75531



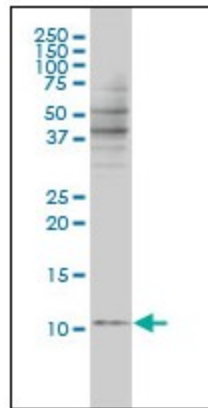
[View online »](#)

Background:

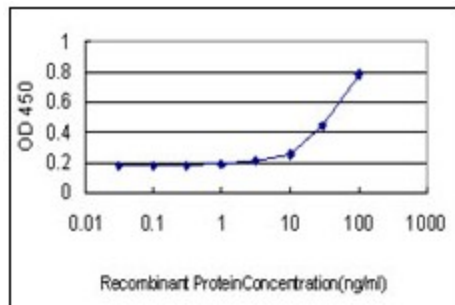
The protein encoded by this gene was identified by its ability to protect retroviruses from intramolecular integration and therefore promote intermolecular integration into the host cell genome. The endogenous function of the protein is unknown. The protein forms a homodimer which localizes to the nucleus and is specifically associated with chromosomes during mitosis. This protein binds to DNA in a non-specific manner and studies in rodents suggest that it also binds to lamina-associated polypeptide 2, a component of the nuclear lamina.

Synonyms:

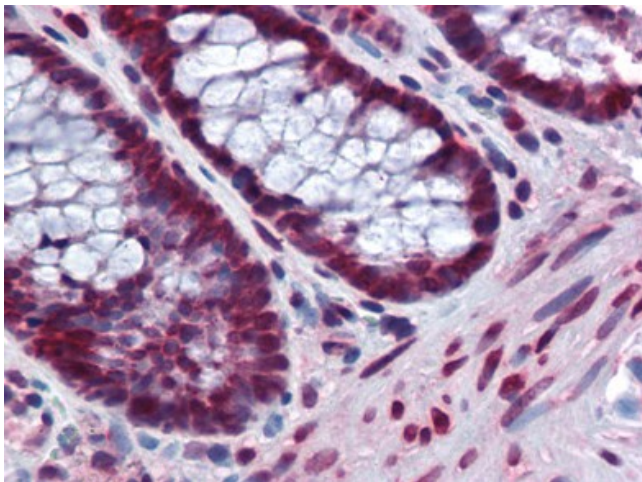
BAF, BCRG1

Product images:


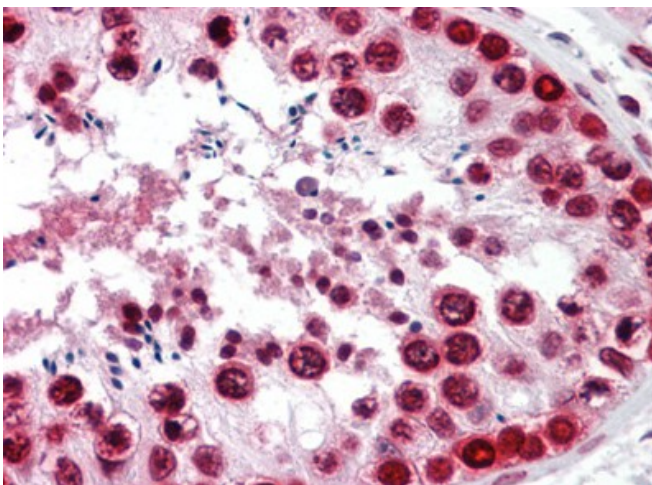
BANF1 monoclonal antibody, clone 3F10-4G12
Western Blot analysis of BANF1 expression in Jurkat.



Detection limit for recombinant GST tagged BANF1 is approximately 1 ng/ml as a capture antibody.



Human Colon: Formalin-Fixed, Paraffin-Embedded (FFPE)



Human Testis: Formalin-Fixed, Paraffin-Embedded (FFPE)