

## Product datasheet for **AM20963PU-N**

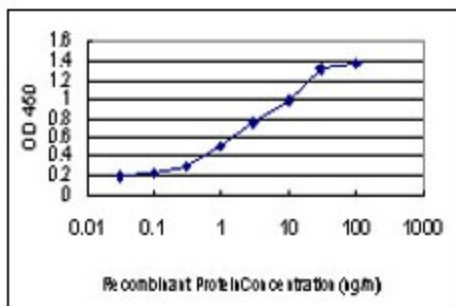
### CDKL1 Mouse Monoclonal Antibody [Clone ID: 2H6]

#### Product data:

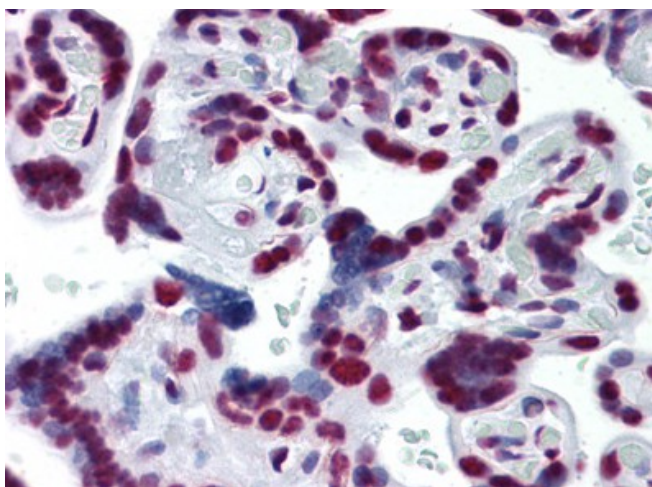
Product Type:	Primary Antibodies
Clone Name:	2H6
Applications:	ELISA, IHC, WB
Recommended Dilution:	<b>ELISA.</b> <b>Immunohistochemistry on Paraffin Sections:</b> 5 µg/ml. <b>Western Blot.</b>
Reactivity:	Human
Host:	Mouse
Isotype:	IgG2a
Clonality:	Monoclonal
Immunogen:	Recombinant protein, CDKL1 (NP_004187, 259 a.a. ~ 358 a.a) partial recombinant protein with GST tag. MW of the GST tag alone is 26 KDa.
Specificity:	This antibody reacts to Cyclin-dependent Kinase-like 1 (CDKL1).
Formulation:	PBS, pH 7.2 State: Liquid purified Ig fraction
Purification:	Protein A Chromatography
Conjugation:	Unconjugated
Storage:	Store the antibody at -20°C. Avoid repeated freezing and thawing.
Stability:	Shelf life: one year from despatch.
Gene Name:	cyclin dependent kinase like 1
Database Link:	<a href="#">Entrez Gene 8814 Human Q00532</a>
Synonyms:	KKIALRE
Protein Families:	Druggable Genome, Protein Kinase



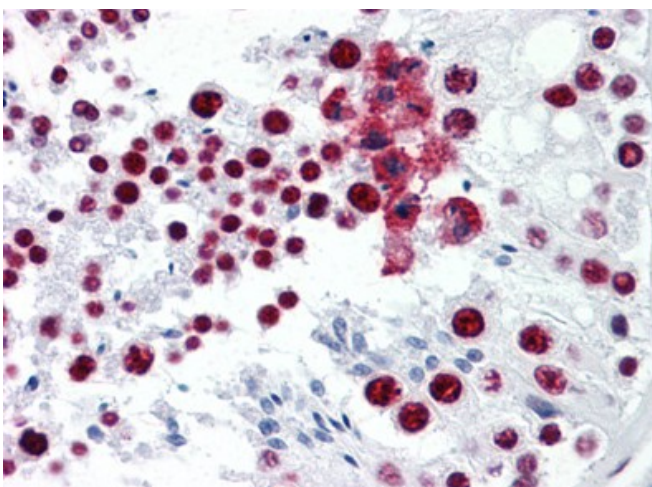
[View online »](#)

**Product images:**

Detection limit for recombinant GST tagged CDKL1 is approximately 0.1 ng/ml as a capture antibody.



Human Placenta: Formalin-Fixed, Paraffin-Embedded (FFPE)



Human Testis: Formalin-Fixed, Paraffin-Embedded (FFPE)