

Product datasheet for **AM20958PU-N**

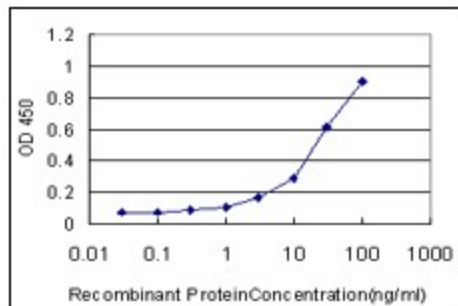
BBOX1 Mouse Monoclonal Antibody [Clone ID: 6H3]

Product data:

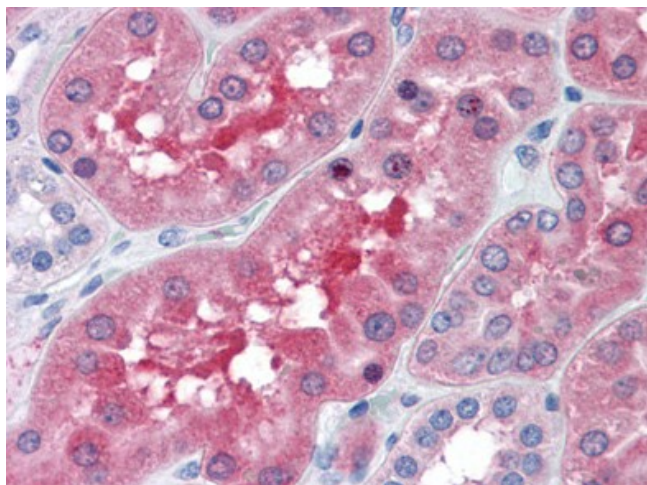
Product Type:	Primary Antibodies
Clone Name:	6H3
Applications:	ELISA, IHC, WB
Recommended Dilution:	ELISA. Immunohistochemistry on Paraffin Sections: 10 µg/ml. Western Blot.
Reactivity:	Human
Host:	Mouse
Isotype:	IgG1
Clonality:	Monoclonal
Immunogen:	Recombinant protein, BBOX1 (NP_003977, 278 a.a. ~ 388 a.a) partial recombinant protein with GST tag. MW of the GST tag alone is 26 KDa.
Specificity:	This antibody reacts to Butyrobetaine (gamma), 2-oxoglutarate Dioxygenase (gamma-butyrobetaine Hydroxylase) 1 (BBOX1).
Formulation:	PBS, pH 7.2 State: Liquid purified Ig fraction
Purification:	Protein A Chromatography
Conjugation:	Unconjugated
Storage:	Store the antibody at -20°C. Avoid repeated freezing and thawing.
Stability:	Shelf life: one year from despatch.
Gene Name:	gamma-butyrobetaine hydroxylase 1
Database Link:	Entrez Gene 8424 Human O75936
Synonyms:	Gamma-BBH, BBOX, Gamma-butyrobetaine dioxygenase
Protein Pathways:	Lysine degradation



[View online »](#)

Product images:

Detection limit for recombinant GST tagged BBOX1 is approximately 1 ng/ml as a capture antibody.



Human Kidney: Formalin-Fixed, Paraffin-Embedded (FFPE)