

## Product datasheet for **AM20957PU-N**

### Zyxin (ZYG) (full length) Mouse Monoclonal Antibody [Clone ID: 2D1]

#### Product data:

Product Type:	Primary Antibodies
Clone Name:	2D1
Applications:	ELISA, IHC, WB
Recommended Dilution:	<b>ELISA.</b> <b>Immunohistochemistry on Paraffin Sections:</b> 5 µg/ml. <b>Western Blot.</b>
Reactivity:	Human, Mouse
Host:	Mouse
Isotype:	IgG2a
Clonality:	Monoclonal
Immunogen:	zYX (AAH08743, 1 a.a. ~ 573 a.a) full length recombinant protein with GST tag
Specificity:	This antibody reacts to full length Zyxin (ZYG).
Formulation:	PBS, pH 7.4 State: Purified State: Liquid purified Ig fraction
Concentration:	lot specific
Purification:	Protein A Chromatography
Conjugation:	Unconjugated
Storage:	Store the antibody in aliquots at -20°C. Avoid repeated freezing and thawing.
Stability:	Shelf life: one year from despatch.
Gene Name:	zyxin
Database Link:	<a href="#">Entrez Gene 22793 Mouse</a> <a href="#">Entrez Gene 7791 Human</a> <a href="#">Q15942</a>



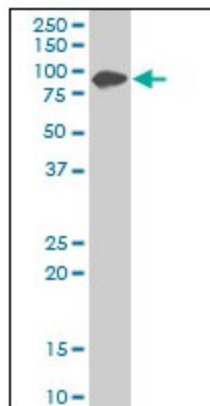
[View online »](#)

**Background:** Focal adhesions are actin-rich structures that enable cells to adhere to the extracellular matrix and at which protein complexes involved in signal transduction assemble. Zyxin is a zinc-binding phosphoprotein that concentrates at focal adhesions and along the actin cytoskeleton. Zyxin has an N-terminal proline-rich domain and three LIM domains in its C-terminal half.

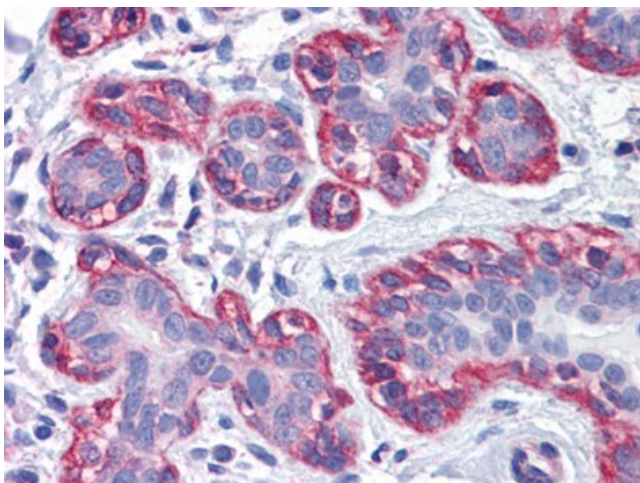
**Synonyms:** Zyxin-2, ZYX

**Protein Pathways:** Focal adhesion

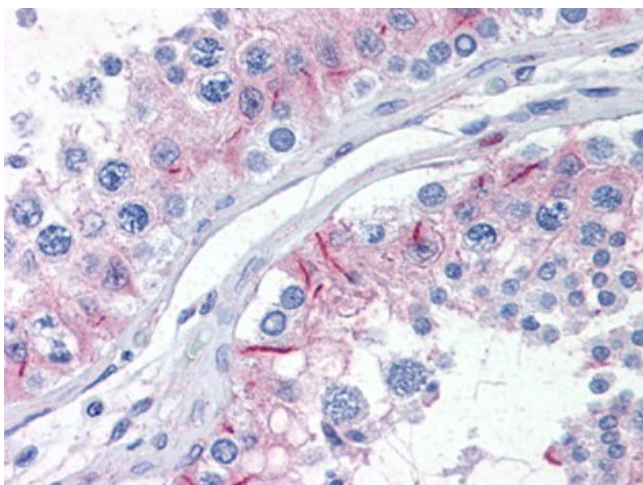
**Product images:**



ZYX monoclonal antibody, clone 2D1 Western Blot analysis of ZYX expression in NIH/3T3.



Human Breast: Formalin-Fixed, Paraffin-Embedded (FFPE)



Human Testis: Formalin-Fixed, Paraffin-Embedded (FFPE)