

## Product datasheet for **AM20952PU-N**

### Talin 1 (TLN1) Mouse Monoclonal Antibody [Clone ID: 2E10]

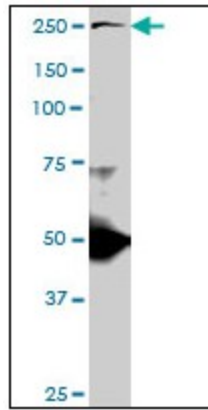
#### Product data:

Product Type:	Primary Antibodies
Clone Name:	2E10
Applications:	ELISA, IHC, WB
Recommended Dilution:	<b>ELISA.</b> <b>Immunohistochemistry on Paraffin Sections:</b> 5 µg/ml. <b>Western Blot.</b>
Reactivity:	Human, Mouse, Rat
Host:	Mouse
Isotype:	IgG3
Clonality:	Monoclonal
Immunogen:	Recombinant protein, TLN1 (NP_006280, 1052 a.a. ~ 1150 a.a) partial recombinant protein with GST tag. MW of the GST tag alone is 26 KDa.
Specificity:	This antibody reacts to Talin 1 (TLN1).
Formulation:	PBS, pH 7.2 State: Liquid purified Ig fraction
Purification:	Protein A Chromatography
Conjugation:	Unconjugated
Storage:	Store the antibody at -20°C. Avoid repeated freezing and thawing.
Stability:	Shelf life: one year from despatch.
Gene Name:	talin 1
Database Link:	<a href="#">Entrez Gene 21894 Mouse</a> <a href="#">Entrez Gene 313494 Rat</a> <a href="#">Entrez Gene 7094 Human</a> <a href="#">Q9Y490</a>
Synonyms:	KIAA1027, TLN
Protein Families:	Druggable Genome
Protein Pathways:	Focal adhesion

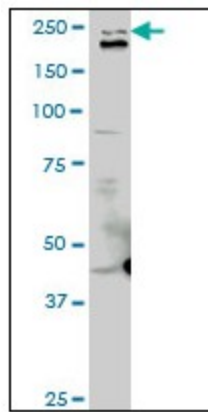


[View online »](#)

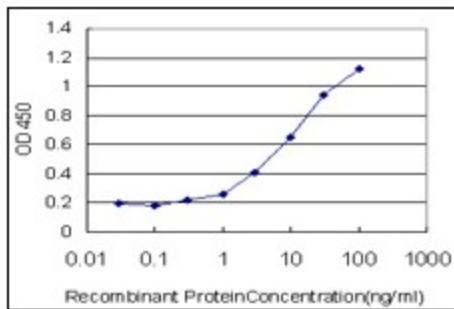
Product images:



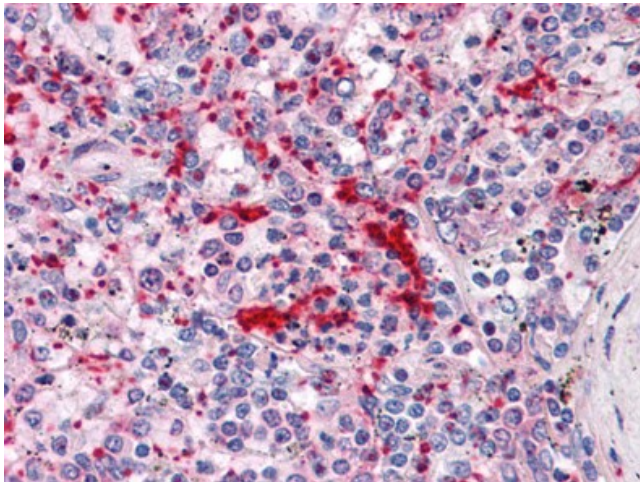
TLN1 monoclonal antibody clone 2E10. Western Blot analysis of TLN1 expression in PC-12.



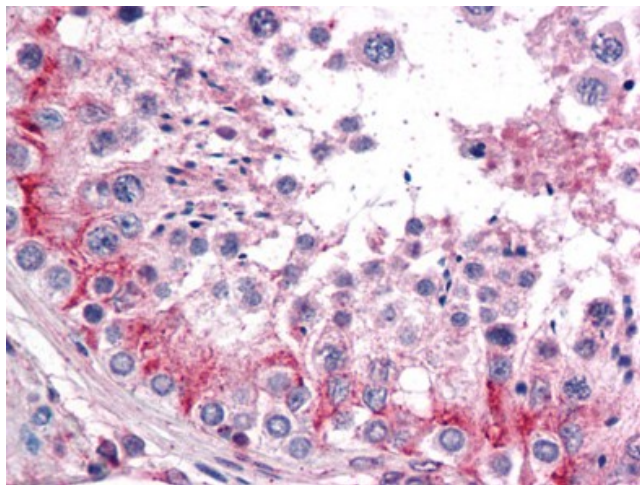
TLN1 monoclonal antibody clone 2E10. Western Blot analysis of TLN1 expression in Raw 264.7.



Detection limit for recombinant GST tagged TLN1 is approximately 0.3 ng/ml as a capture antibody.



Human Spleen: Formalin-Fixed, Paraffin-Embedded (FFPE)



Human Testis: Formalin-Fixed, Paraffin-Embedded (FFPE)