

Product datasheet for **AM20948PU-N**

ADAM17 Mouse Monoclonal Antibody [Clone ID: 1F6]

Product data:

Product Type:	Primary Antibodies
Clone Name:	1F6
Applications:	ELISA, IF, IHC, PLA, WB
Recommended Dilution:	ELISA. PLA. Western Blot: 1/500-1/1000. Immunohistochemistry on Paraffin Sections: 5 µg/ml.
Reactivity:	Human
Host:	Mouse
Isotype:	IgG2b
Clonality:	Monoclonal
Immunogen:	Recombinant protein, ADAM17 (NP_003174, 215 a.a. ~ 315 a.a) partial recombinant protein with GST tag. MW of the GST tag alone is 26 KDa.
Specificity:	This antibody reacts to A Disintegrin And Metalloproteinase Domain 17 (ADAM17/TACE).
Formulation:	PBS, pH 7.2 State: Liquid purified Ig fraction
Concentration:	lot specific
Purification:	Protein A Chromatography
Conjugation:	Unconjugated
Storage:	Upon receipt, store undiluted (in aliquots) at -20°C. Avoid repeated freezing and thawing.
Stability:	Shelf life: one year from despatch.
Gene Name:	ADAM metallopeptidase domain 17
Database Link:	Entrez Gene 6868 Human P78536



[View online »](#)

Background:

Tumor-necrosis factor- α is a proinflammatory cytokine and contributes to a variety of inflammatory disease responses and programmed cell death. TNF- α is synthesized as a 26K type II membrane-bound precursor that is cleaved by a convertase to generate secreted 17K mature TNF- α . TNF- α converting enzyme (TACE) protein was recently purified and the human and mouse TACE cDNAs were cloned by several groups separately. TACE is a membrane-bound metalloprotease-disintegrin in the family of mammalian ADAM (for a disintegrin and metalloprotease). TACE also processes other cell surface proteins, including TNF receptor, TGF α , the L-selectin adhesion molecule, and alpha-cleavage of amyloid protein precursor (APP). TACE mRNA is expressed in a variety of human and murine tissues. TACE was selected as one of the few targets in cytokine activation by the Eighth International Conference of the Inflammation Research Association. ADAM17 is a Metallopeptidase M12B type protease.

Synonyms:

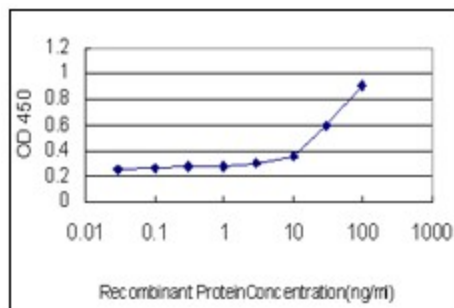
CSVP, TACE

Protein Families:

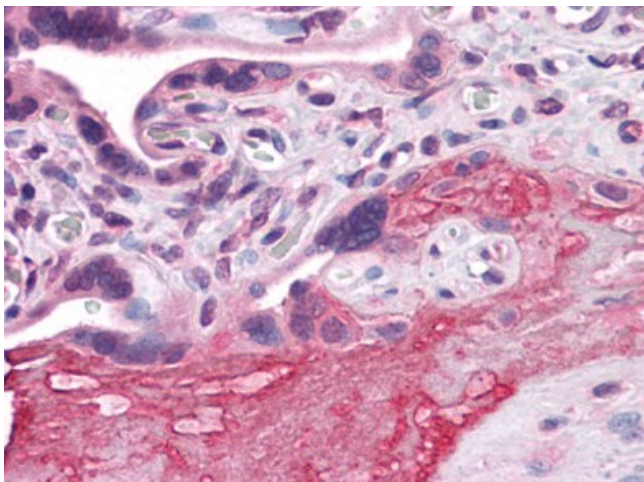
Druggable Genome, Protease, Transmembrane

Protein Pathways:

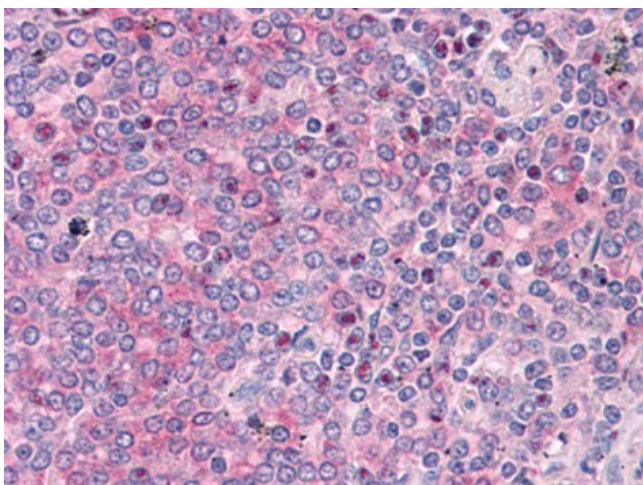
Alzheimer's disease, Epithelial cell signaling in Helicobacter pylori infection, Notch signaling pathway

Product images:


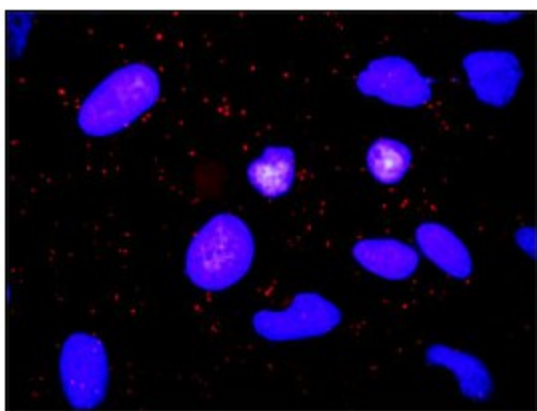
Detection limit for recombinant GST tagged ADAM17 is approximately 3 ng/ml as a capture antibody.



Human Placenta: Formalin-Fixed, Paraffin-Embedded (FFPE)



Human Spleen: Formalin-Fixed, Paraffin-Embedded (FFPE)



Proximity Ligation Analysis (PLA) of protein-protein interactions between TGFA and ADAM17. HeLa cells were stained with anti-TGFA rabbit purified polyclonal 1/1200 and anti-ADAM17 mouse monoclonal antibody 1/50.