

## Product datasheet for **AM20946PU-N**

### Stromal interaction molecule 1 (STIM1) Mouse Monoclonal Antibody [Clone ID: 5A2]

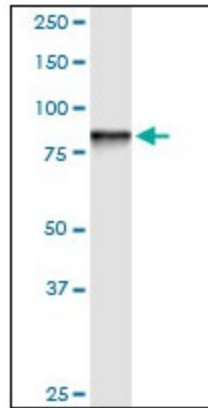
#### Product data:

Product Type:	Primary Antibodies
Clone Name:	5A2
Applications:	ELISA, IF, IHC, WB
Recommended Dilution:	<b>ELISA.</b> <b>Immunofluorescence:</b> 10 µg/ml. <b>Immunohistochemistry on Paraffin Sections:</b> 5 µg/ml. <b>Western Blot:</b> 1/500 - 1/1000.
Reactivity:	Human
Host:	Mouse
Isotype:	IgG2a
Clonality:	Monoclonal
Immunogen:	STIM1 (AAH21300, 24 a.a. ~ 686 a.a) full length recombinant protein with GST tag. MW of the GST tag alone is 26 KDa.
Specificity:	This antibody reacts to Stromal Interaction Molecule 1 (STIM1).
Formulation:	PBS, pH 7.2 State: Liquid purified Ig fraction
Concentration:	lot specific
Purification:	Protein A Chromatography
Conjugation:	Unconjugated
Storage:	Store the antibody at -20°C. Avoid repeated freezing and thawing.
Stability:	Shelf life: one year from despatch.
Gene Name:	stromal interaction molecule 1
Database Link:	<a href="#">Entrez Gene 6786 Human Q13586</a>
Synonyms:	Stromal interaction molecule 1
Protein Families:	Transmembrane

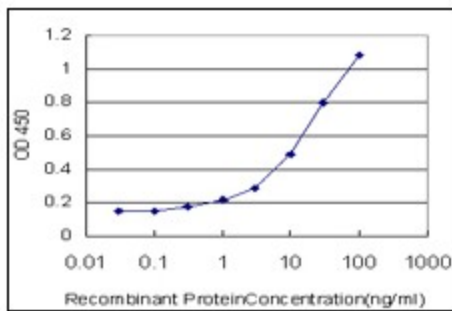


[View online »](#)

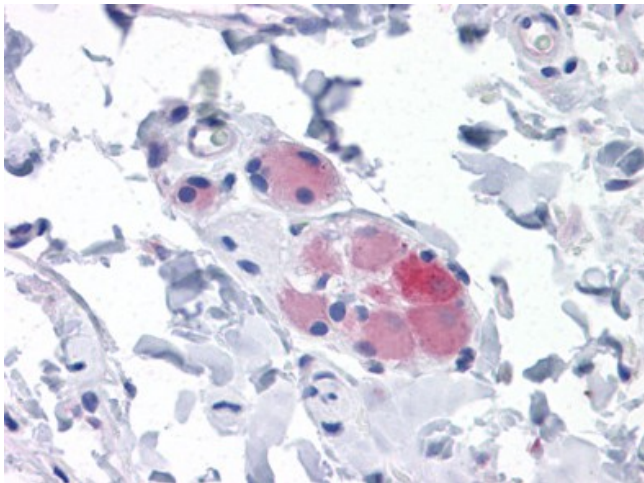
Product images:



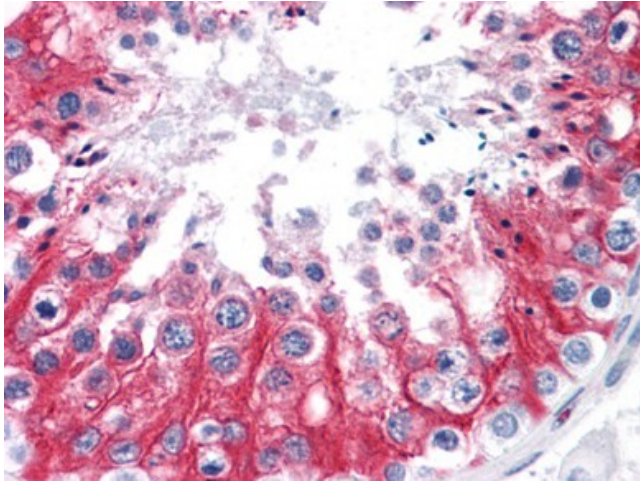
STIM1 monoclonal antibody clone 5A2. Western Blot analysis of STIM1 expression in human liver.



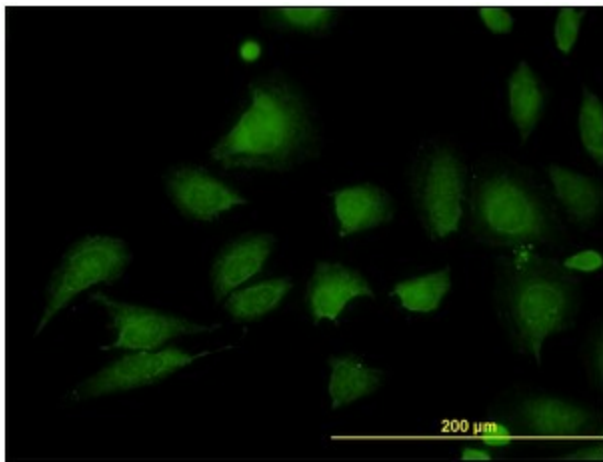
Detection limit for recombinant GST tagged STIM1 is approximately 0.3 ng/ml as a capture antibody.



Human Small Intestine, submucosal plexus: Formalin-Fixed, Paraffin-Embedded (FFPE)



Human Testis: Formalin-Fixed, Paraffin-Embedded (FFPE)



Immunofluorescence of monoclonal antibody to STIM1 on HeLa cell (antibody concentration 10 ug/ml).