

Product datasheet for **AM20940PU-N**

SHC (SHC1) Mouse Monoclonal Antibody [Clone ID: 3F4]

Product data:

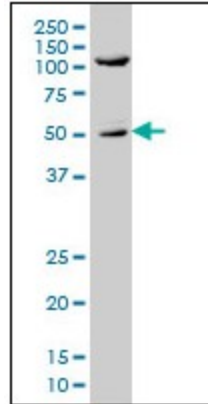
Product Type:	Primary Antibodies
Clone Name:	3F4
Applications:	ELISA, IF, IHC, PLA, WB
Recommended Dilution:	ELISA. Immunofluorescence: 10 µg/ml. Immunohistochemistry on Paraffin Sections: 1 µg/ml. PLA. Western Blot.
Reactivity:	Human
Host:	Mouse
Clonality:	Monoclonal
Immunogen:	SHC1 (AAH33925, 171 a.a. ~ 280 a.a) partial recombinant protein with GST tag. MW of the GST tag alone is 26 KDa.
Specificity:	This antibody recognizes SHC (Src Homology 2 Domain Containing) Transforming Protein 1 (SHC1).
Formulation:	PBS, pH 7.2 State: Liquid purified Ig fraction
Concentration:	lot specific
Purification:	Protein A Chromatography
Conjugation:	Unconjugated
Storage:	Upon receipt, store undiluted (in aliquots) at -20°C. Avoid repeated freezing and thawing.
Stability:	Shelf life: one year from despatch.
Gene Name:	SHC adaptor protein 1
Database Link:	Entrez Gene 6464 Human P29353
Synonyms:	SHC-transforming protein 1, SHC-transforming protein A, SHC-transforming protein 3, SHCA
Protein Families:	Druggable Genome



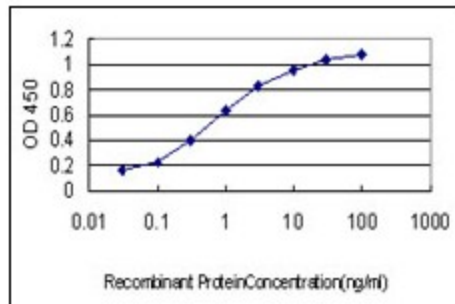
[View online »](#)

Protein Pathways:

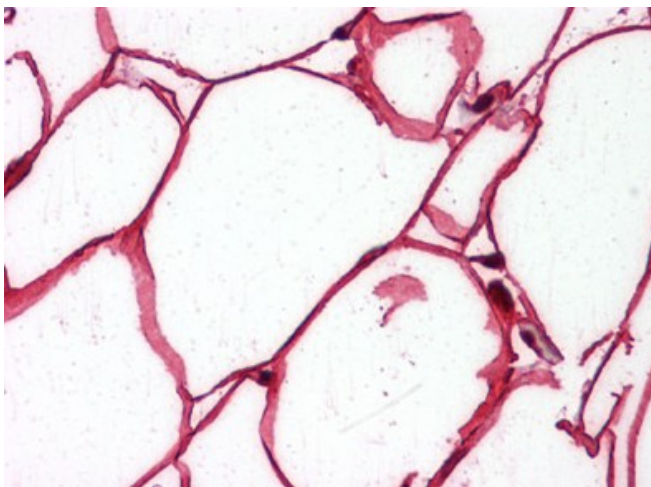
Adherens junction, Arrhythmogenic right ventricular cardiomyopathy (ARVC), Chemokine signaling pathway, Chronic myeloid leukemia, Dilated cardiomyopathy, ErbB signaling pathway, Focal adhesion, Glioma, Hypertrophic cardiomyopathy (HCM), Insulin signaling pathway, Leukocyte transendothelial migration, Natural killer cell mediated cytotoxicity, Neurotrophin signaling pathway, Pathogenic Escherichia coli infection, Regulation of actin cytoskeleton, Tight junction, Vibrio cholerae infection, Viral myocarditis

Product images:


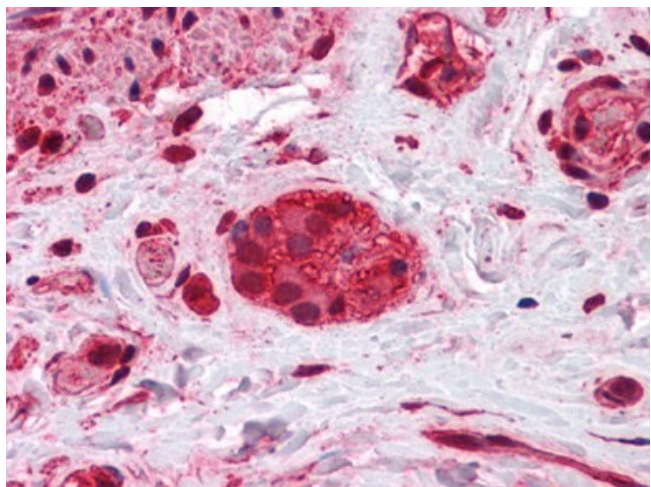
SHC1 monoclonal antibody clone 3F4 Western Blot analysis of SHC1 expression in A-431.



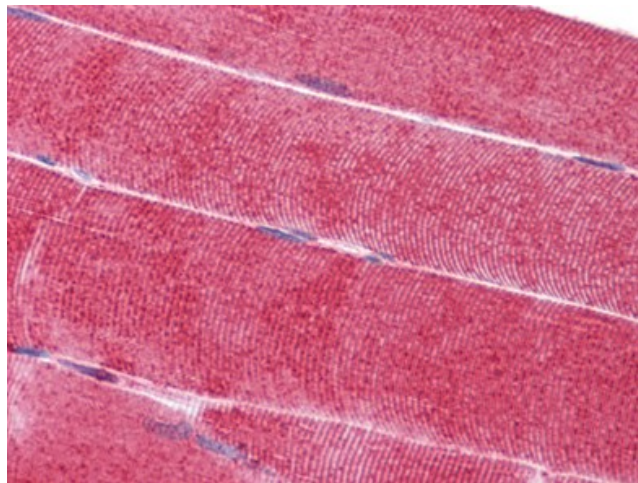
Detection limit for recombinant GST tagged SHC1 is approximately 0.03 ng/ml as a capture antibody.



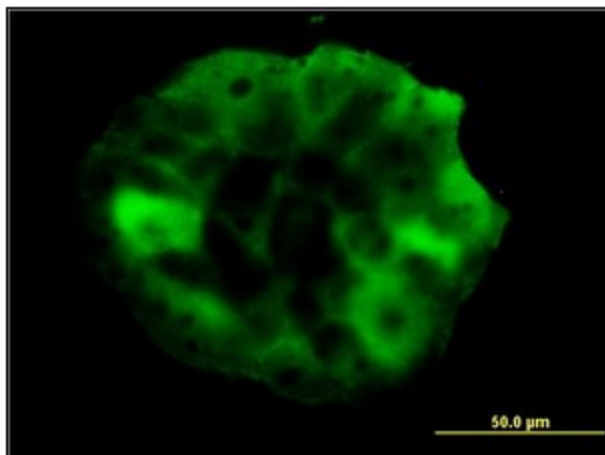
Human Adipocytes: Formalin-Fixed, Paraffin-Embedded (FFPE)



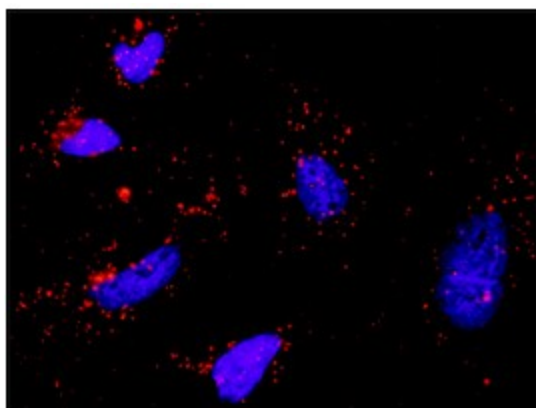
Human Colon, myenteric plexus: Formalin-Fixed, Paraffin-Embedded (FFPE)



Human Skeletal Muscle: Formalin-Fixed, Paraffin-Embedded (FFPE)



Immunofluorescence of monoclonal antibody to SHC1 on A-431 cell (antibody concentration 10 ug/ml).



Proximity Ligation Analysis (PLA) of protein-protein interactions between PIK3R1 and SHC1. HeLa cells were stained with anti-PIK3R1 rabbit purified polyclonal 1/1200 and anti-SHC1 mouse monoclonal antibody 1/50.