

Product datasheet for **AM20938PU-N**

Scaffold attachment factor B2 (SAFB2) Mouse Monoclonal Antibody [Clone ID: 5A11]

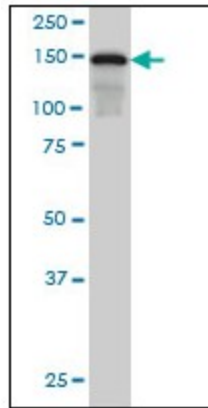
Product data:

Product Type:	Primary Antibodies
Clone Name:	5A11
Applications:	ELISA, IF, IHC, WB
Recommended Dilution:	ELISA. Immunofluorescence: 10 µg/ml. Immunohistochemistry on Paraffin Sections: 5 µg/ml. Western Blot.
Reactivity:	Human
Host:	Mouse
Isotype:	IgG2b
Clonality:	Monoclonal
Immunogen:	SAFB (NP_002958, 111 a.a. ~ 201 a.a) partial recombinant protein with GST tag. MW of the GST tag alone is 26 KDa.
Specificity:	This antibody reacts to Scaffold Attachment Factor B (SAFB).
Formulation:	PBS, pH 7.2 State: Liquid purified Ig fraction
Concentration:	lot specific
Purification:	Protein A Chromatography
Conjugation:	Unconjugated
Storage:	Store the antibody at -20°C. Avoid repeated freezing and thawing.
Stability:	Shelf life: one year from despatch.
Gene Name:	scaffold attachment factor B2
Database Link:	Entrez Gene 9667 Human Q14151
Synonyms:	Scaffold attachment factor B2, SAF-B2, KIAA0138
Protein Families:	Transcription Factors

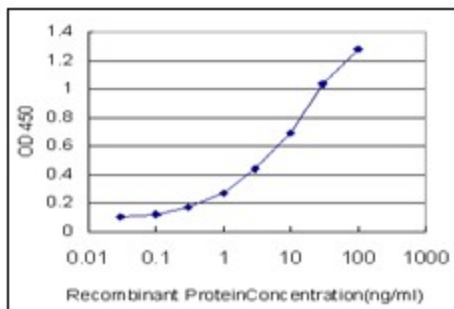


[View online »](#)

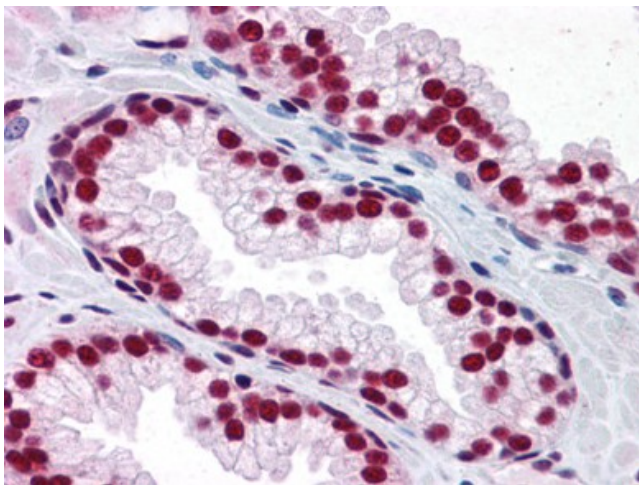
Product images:



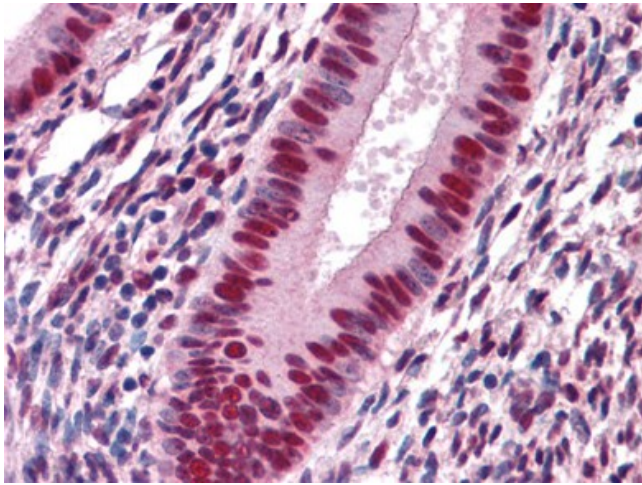
SAFB monoclonal antibody clone 5A11 Western Blot analysis of SAFB expression in Hela NE.



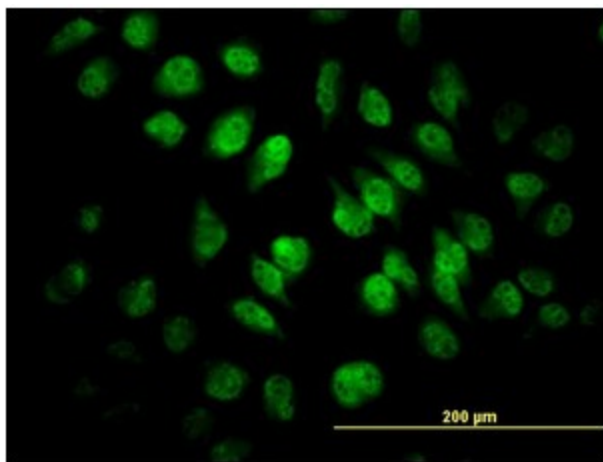
Detection limit for recombinant GST tagged SAFB is approximately 0.1 ng/ml as a capture antibody.



Human Prostate: Formalin-Fixed, Paraffin-Embedded (FFPE)



Human Uterus: Formalin-Fixed, Paraffin-Embedded (FFPE)



Immunofluorescence of monoclonal antibody to SAFB on HeLa cell (antibody concentration 10 ug/ml).