

Product datasheet for **AM20936PU-N**

RRM2 Mouse Monoclonal Antibody [Clone ID: 1E1]

Product data:

Product Type:	Primary Antibodies
Clone Name:	1E1
Applications:	ELISA, IF, IHC, WB
Recommended Dilution:	ELISA. Immunofluorescence: 10 µg/ml. Immunohistochemistry on Paraffin Sections: 5 µg/ml. Western Blot.
Reactivity:	Human
Host:	Mouse
Isotype:	IgG1
Clonality:	Monoclonal
Immunogen:	Recombinant protein, RRM2 (NP_001025, 1 a.a. ~ 111 a.a) partial recombinant protein with GST tag.
Specificity:	This antibody recognizes Ribonucleoside-diphosphate Reductase M2 Chain (RRM2).
Formulation:	PBS, pH 7.2 State: Purified State: Liquid purified Ig fraction
Concentration:	lot specific
Purification:	Protein A Chromatography
Conjugation:	Unconjugated
Storage:	Store the antibody (in aliquots) at -20°C. Avoid repeated freezing and thawing.
Stability:	Shelf life: one year from despatch.
Gene Name:	ribonucleotide reductase regulatory subunit M2
Database Link:	Entrez Gene 6241 Human P31350



[View online »](#)

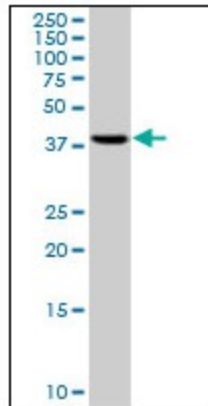
Background: Ribonucleotide reductase catalyzes the formation of deoxyribonucleotides from ribonucleotides. It is composed of 2 non-identical subunits, proteins M1 and M2. Synthesis of M2 is regulated in a cell-cycle dependent fashion.

Synonyms: Ribonucleotide reductase small subunit, Ribonucleotide reductase small chain

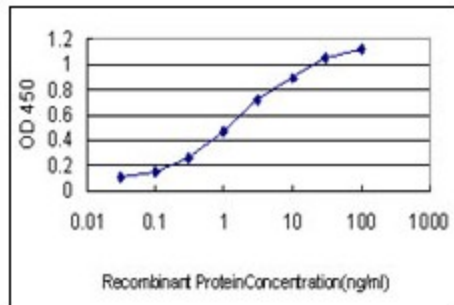
Protein Families: Druggable Genome

Protein Pathways: Glutathione metabolism, Metabolic pathways, p53 signaling pathway, Purine metabolism, Pyrimidine metabolism

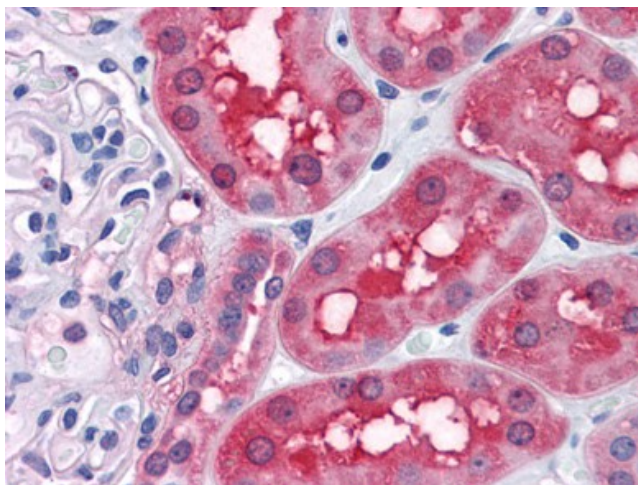
Product images:



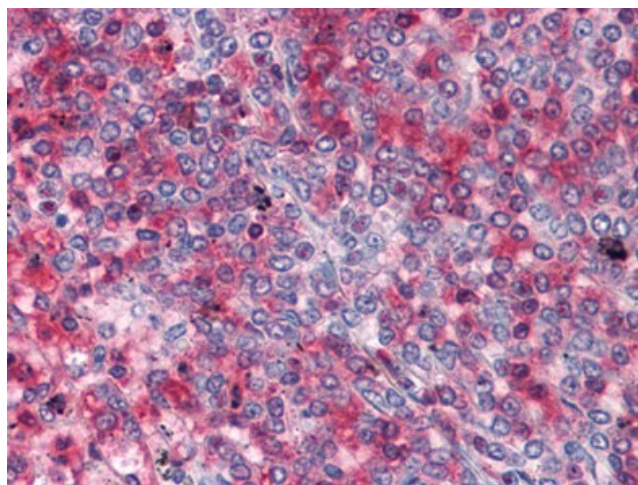
RRM2 monoclonal antibody clone 1E1. Western Blot analysis of RRM2 expression in HepG2.



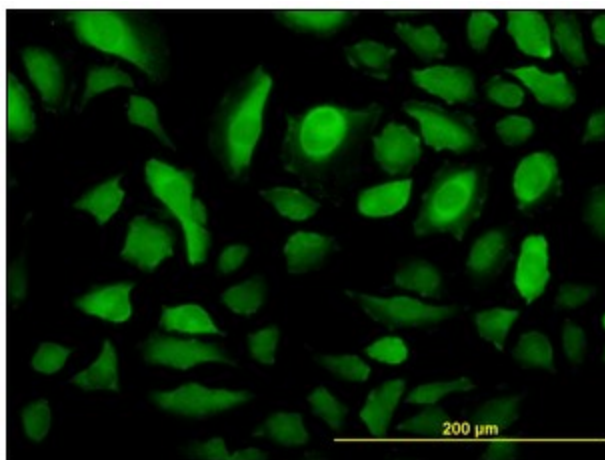
Detection limit for recombinant GST tagged RRM2 is approximately 0.03 ng/ml as a capture antibody.



Human Kidney: Formalin-Fixed, Paraffin-Embedded (FFPE)



Human Spleen: Formalin-Fixed, Paraffin-Embedded (FFPE)



Immunofluorescence of monoclonal antibody to RRM2 on HeLa cell (antibody concentration 10 ug/ml).