

Product datasheet for **AM20934PU-N**

RPS7 Mouse Monoclonal Antibody [Clone ID: 3G4]

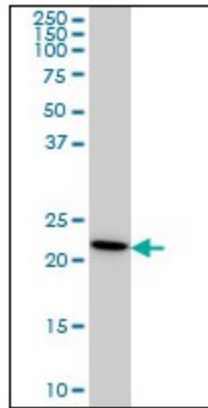
Product data:

Product Type:	Primary Antibodies
Clone Name:	3G4
Applications:	ELISA, IF, IHC, WB
Recommended Dilution:	ELISA. Immunofluorescence: 20 µg/ml. Immunohistochemistry on Paraffin Sections: 5 µg/ml. Western Blot.
Reactivity:	Human, Mouse, Rat
Host:	Mouse
Isotype:	IgG1
Clonality:	Monoclonal
Immunogen:	Recombinant protein, RPS7 (NP_001002, 95 a.a. ~ 195 a.a) partial recombinant protein with GST tag. MW of the GST tag alone is 26 KDa.
Specificity:	This antibody reacts to Ribosomal Protein S7 (RPS7).
Formulation:	PBS, pH 7.2 State: Liquid purified Ig fraction
Concentration:	lot specific
Purification:	Protein A Chromatography
Conjugation:	Unconjugated
Storage:	Store the antibody at -20°C. Avoid repeated freezing and thawing.
Stability:	Shelf life: one year from despatch.
Gene Name:	ribosomal protein S7
Database Link:	Entrez Gene 20115 Mouse Entrez Gene 29258 Rat Entrez Gene 6201 Human P62081
Synonyms:	40S ribosomal protein S7
Protein Pathways:	Ribosome

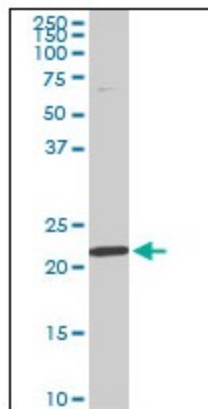


[View online »](#)

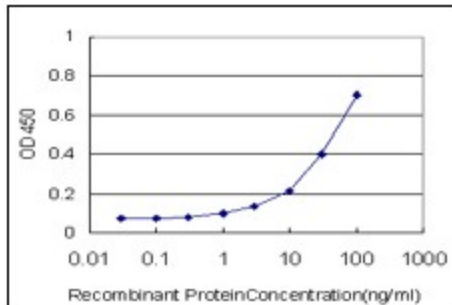
Product images:



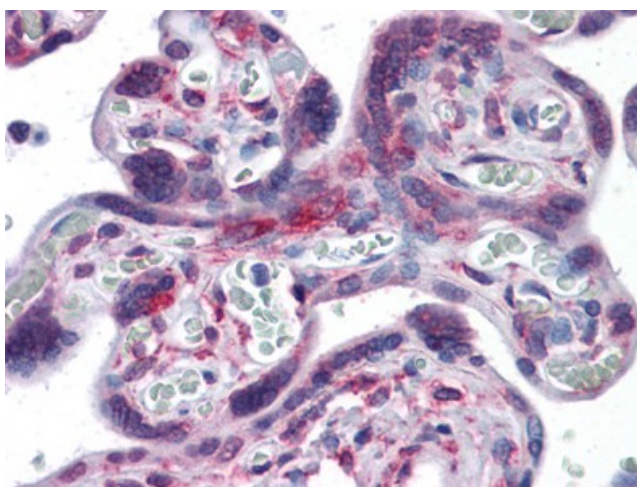
RPS7 monoclonal antibody clone 3G4 Western Blot analysis of RPS7 expression in HeLa.



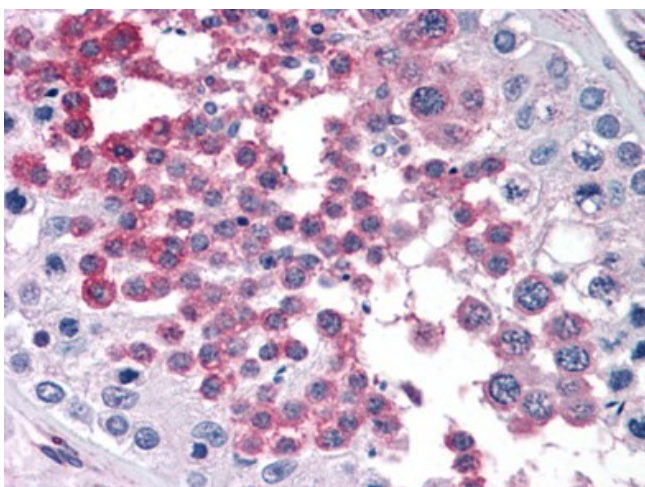
RPS7 monoclonal antibody clone 3G4. Western Blot analysis of RPS7 expression in NIH/3T3.



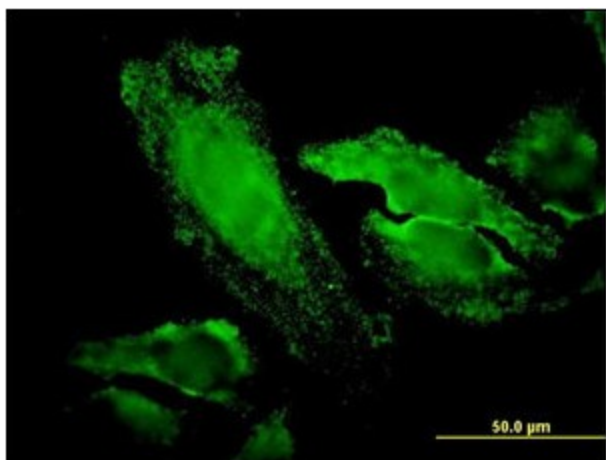
Detection limit for recombinant GST tagged RPS7 is approximately 1 ng/ml as a capture antibody.



Human Placenta: Formalin-Fixed, Paraffin-Embedded (FFPE)



Human Testis: Formalin-Fixed, Paraffin-Embedded (FFPE)



Immunofluorescence of monoclonal antibody to RPS7 on HeLa cell (antibody concentration 20 ug/ml).