

Product datasheet for **AM20929PU-N**

cGKI (PRKG1) Mouse Monoclonal Antibody [Clone ID: 2B3]

Product data:

Product Type:	Primary Antibodies
Clone Name:	2B3
Applications:	ELISA, IHC, WB
Recommended Dilution:	ELISA. Immunohistochemistry on Paraffin Sections: 5 µg/ml. Western Blot: 1/500 - 1/1000.
Reactivity:	Human
Host:	Mouse
Isotype:	IgG1
Clonality:	Monoclonal
Immunogen:	Recombinant protein, PRKG1 (NP_006249, 73 a.a. ~ 171 a.a) partial recombinant protein with GST tag. MW of the GST tag alone is 26 KDa.
Specificity:	This antibody reacts to CGMP-Dependent Protein Kinase Type I (PRKG1).
Formulation:	PBS, pH 7.2 State: Purified State: Liquid purified Ig fraction
Concentration:	lot specific
Purification:	Protein A Chromatography
Conjugation:	Unconjugated
Storage:	Store the antibody at -20°C. Avoid repeated freezing and thawing.
Stability:	Shelf life: one year from despatch.
Gene Name:	protein kinase, cGMP-dependent, type I
Database Link:	Entrez Gene 5592 Human Q13976



[View online »](#)

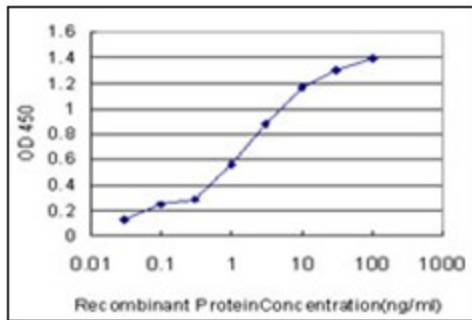
Background: PRKG1, a cGMP type protein kinase, is associated with physiologic processes such as relaxation of vascular smooth muscle and inhibition of platelet aggregation. PRKG1 is activated by binding to cGMP. At least two mRNA variants have been reported - the first two of 19 exons are used alternatively and encode the alpha and beta isoform specific sequences.

Synonyms: PRKG1, PRKGR1A, PRKGR1B, CKG1A, CKG1B, PKG, PGK, cGKI-alpha

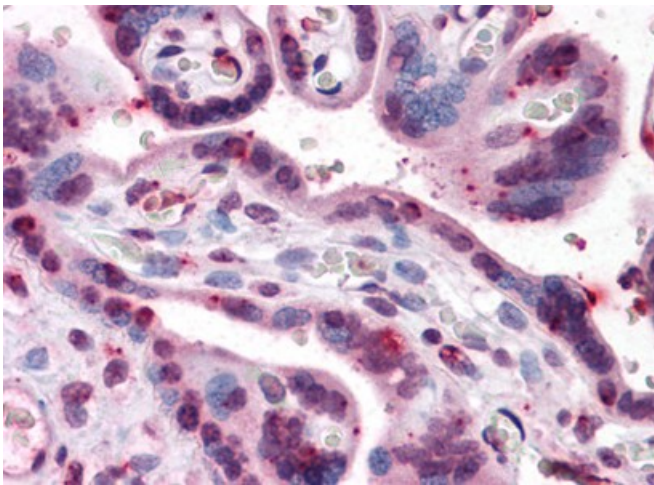
Protein Families: Druggable Genome, Protein Kinase

Protein Pathways: Gap junction, Long-term depression, Olfactory transduction, Vascular smooth muscle contraction

Product images:



Detection limit for recombinant GST tagged PRKG1 is approximately 0.1 ng/ml as a capture antibody



Human Placenta: Formalin-Fixed, Paraffin-Embedded (FFPE)