

Product datasheet for **AM20918PU-N**

MSX2 Mouse Monoclonal Antibody [Clone ID: 1F6]

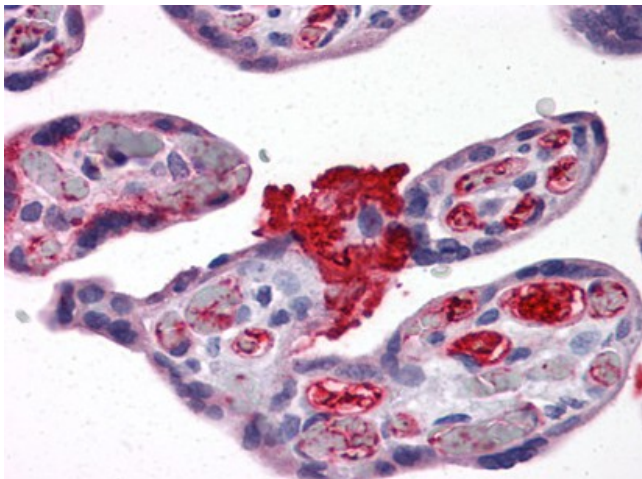
Product data:

Product Type:	Primary Antibodies
Clone Name:	1F6
Applications:	ELISA, IHC, WB
Recommended Dilution:	ELISA. Immunohistochemistry on Paraffin Sections: 5 µg/ml. Western Blot.
Reactivity:	Human
Host:	Mouse
Isotype:	IgG2a
Clonality:	Monoclonal
Immunogen:	Recombinant protein, MSX2 (NP_002440, 101 a.a. ~ 201 a.a) partial recombinant protein with GST tag. MW of the GST tag alone is 26 KDa.
Specificity:	This antibody reacts to Homeobox Protein Msx-2 (MSX2)
Formulation:	PBS, pH 7.2 State: Liquid purified Ig fraction
Concentration:	lot specific
Purification:	Protein A Chromatography
Conjugation:	Unconjugated
Storage:	Store the antibody at -20°C. Avoid repeated freezing and thawing.
Stability:	Shelf life: one year from despatch.
Gene Name:	msh homeobox 2
Database Link:	Entrez Gene 4488 Human P35548
Synonyms:	MSX-2, HOX8, HOX-8
Protein Families:	Druggable Genome, Transcription Factors



[View online »](#)

Product images:



Human Placenta: Formalin-Fixed, Paraffin-Embedded (FFPE)