

Product datasheet for **AM20911PU-N**

SMAD6 Mouse Monoclonal Antibody [Clone ID: 4C8]

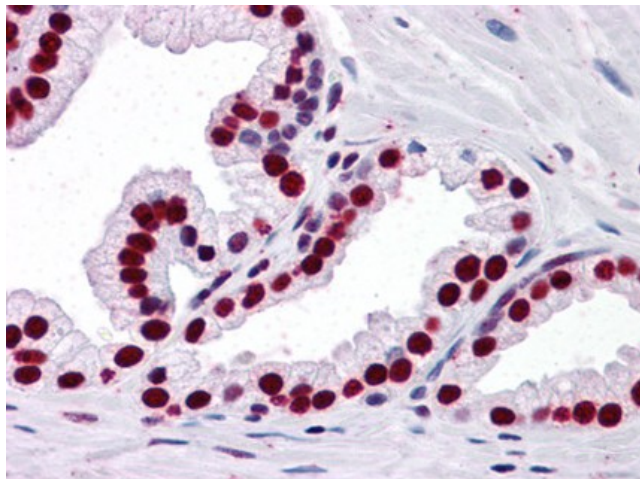
Product data:

Product Type:	Primary Antibodies
Clone Name:	4C8
Applications:	ELISA, IHC, WB
Recommended Dilution:	ELISA. Immunohistochemistry on Paraffin Sections: 5 µg/ml. Western Blot.
Reactivity:	Human
Host:	Mouse
Isotype:	IgG2b
Clonality:	Monoclonal
Immunogen:	Recombinant protein, SMAD6 (NP_005576, 285 a.a. ~ 385 a.a) partial recombinant protein with GST tag. MW of the GST tag alone is 26 KDa.
Specificity:	This antibody reacts to SMAD, Mothers Against DPP Homolog 6 (SMAD6).
Formulation:	PBS, pH 7.2 State: Liquid purified Ig fraction
Concentration:	lot specific
Purification:	Protein A Chromatography
Conjugation:	Unconjugated
Storage:	Store the antibody at -20°C. Avoid repeated freezing and thawing.
Stability:	Shelf life: one year from despatch.
Gene Name:	SMAD family member 6
Database Link:	Entrez Gene 4091 Human O43541
Synonyms:	SMAD family member 6, SMAD 6, SMAD-6, MADH6, MAD homolog 6
Protein Families:	Cancer stem cells, Druggable Genome, ES Cell Differentiation/IPS, Transcription Factors
Protein Pathways:	TGF-beta signaling pathway



[View online »](#)

Product images:



Human Prostate: Formalin-Fixed, Paraffin-Embedded (FFPE)