

Product datasheet for **AM20910PU-N**

Lactate Dehydrogenase B (LDHB) Mouse Monoclonal Antibody [Clone ID: 2H6]

Product data:

Product Type:	Primary Antibodies
Clone Name:	2H6
Applications:	ELISA, IF, IHC, WB
Recommended Dilution:	ELISA. Immunofluorescence: 10 µg/ml. Immunohistochemistry on Paraffin Sections: 5 µg/ml. Western Blot.
Reactivity:	Human
Host:	Mouse
Isotype:	IgG1
Clonality:	Monoclonal
Immunogen:	Recombinant protein, LDHB (AAH02362, 1 a.a. ~ 335 a.a) full length recombinant protein with GST tag. MW of the GST tag alone is 26 KDa.
Specificity:	This antibody reacts to L-lactate Dehydrogenase H Chain (LDHB).
Formulation:	PBS, pH 7.2 State: Liquid purified Ig fraction
Concentration:	lot specific
Purification:	Protein A Chromatography
Conjugation:	Unconjugated
Storage:	Store the antibody at -20°C. Avoid repeated freezing and thawing.
Stability:	Shelf life: one year from despatch.
Gene Name:	lactate dehydrogenase B
Database Link:	Entrez Gene 3945 Human P07195
Synonyms:	LDHB, L-lactate dehydrogenase B chain, LDH-B, EC=1.1.1.27, LDH heart subunit, LDH-H, Renal carcinoma antigen NY-REN-46

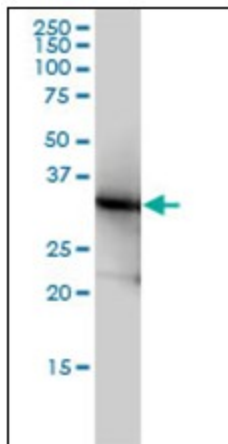


[View online »](#)

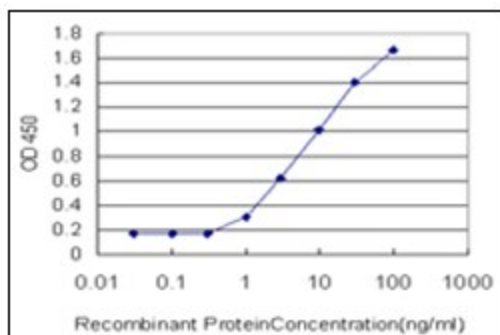
Protein Families: Druggable Genome

Protein Pathways: Cysteine and methionine metabolism, Glycolysis / Gluconeogenesis, Metabolic pathways, Propanoate metabolism, Pyruvate metabolism

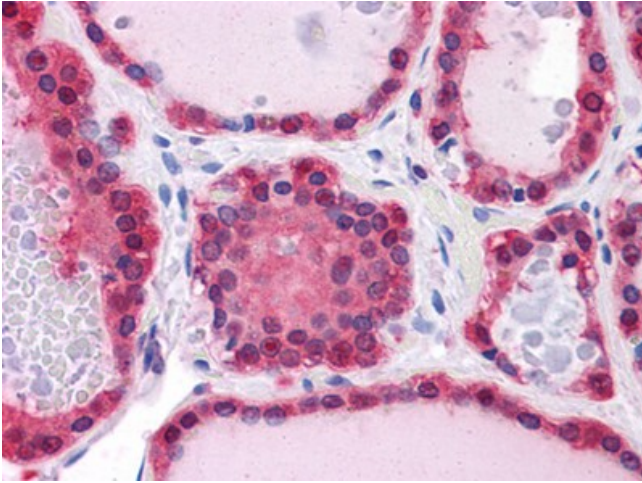
Product images:



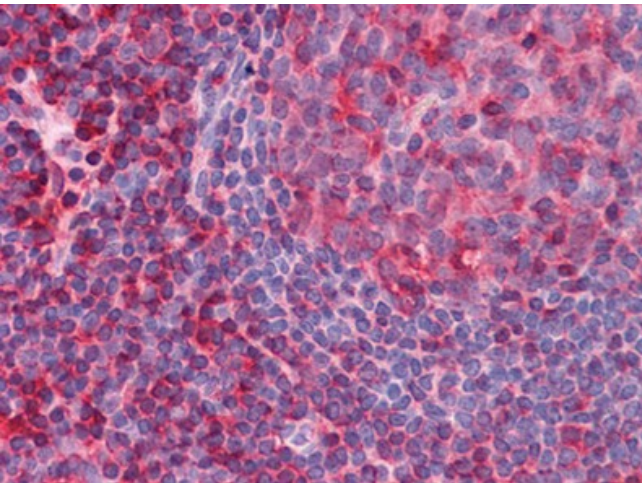
LDHB monoclonal antibody clone 2H6 Western Blot analysis of LDHB expression in HeLa.



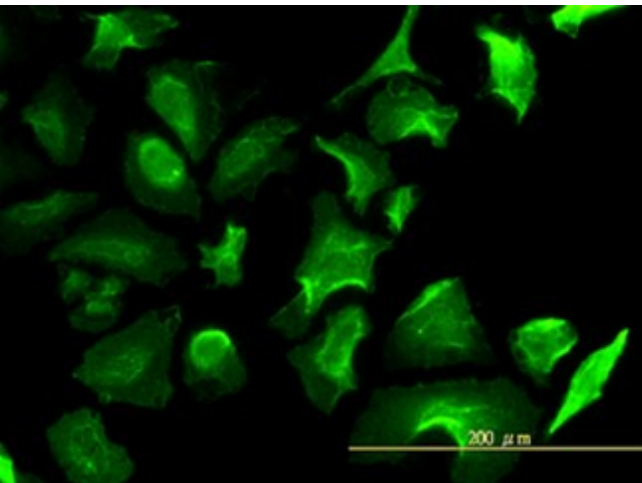
Detection limit for recombinant GST tagged LDHB is approximately 1 ng/ml as a capture antibody.



Human Thyroid: Formalin-Fixed, Paraffin-Embedded (FFPE)



Human Tonsil: Formalin-Fixed, Paraffin-Embedded (FFPE)



Immunofluorescence of monoclonal antibody to LDHB on HeLa cell (antibody concentration 10 ug/ml).