

Product datasheet for **AM20909PU-N**

KRT81 (1-203) Mouse Monoclonal Antibody [Clone ID: 3B10-5B10]

Product data:

Product Type:	Primary Antibodies
Clone Name:	3B10-5B10
Applications:	ELISA, IF, IHC, WB
Recommended Dilution:	ELISA. Immunofluorescence: 10 µg/ml. Immunohistochemistry on Paraffin Sections: 5 µg/ml. Western Blot.
Reactivity:	Human
Host:	Mouse
Isotype:	IgG2b
Clonality:	Monoclonal
Immunogen:	KRTHB1 (AAH21241, 1 a.a. ~ 203 a.a) full length recombinant protein with GST tag. MW of the GST tag alone is 26 KDa.
Specificity:	This antibody recognizes Human Keratin, Hair, Basic, 1 (KRT81). Other species not tested.
Formulation:	PBS, pH 7.4 State: Liquid purified Ig fraction
Concentration:	lot specific
Purification:	Protein A Chromatography
Conjugation:	Unconjugated
Storage:	Upon receipt, store undiluted (in aliquots) at -20°C. Avoid repeated freezing and thawing.
Stability:	Shelf life: one year from despatch.
Gene Name:	keratin 81
Database Link:	Entrez Gene 3887 Human Q14533



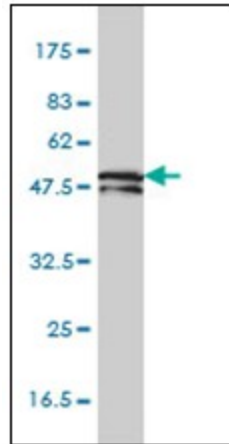
[View online »](#)

Background:

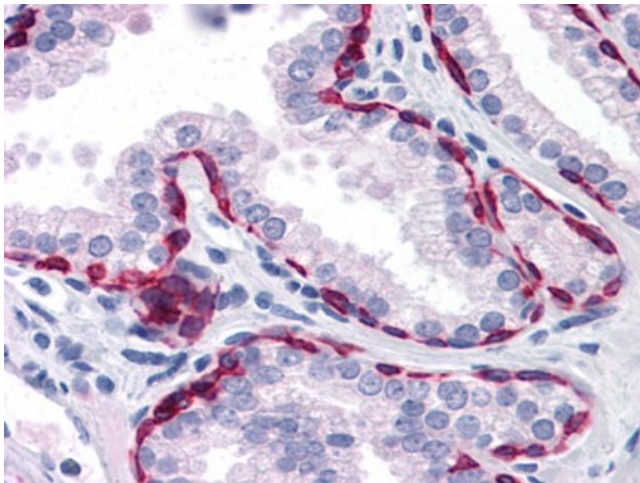
The protein encoded by this gene is a member of the keratin gene family. As a type II hair keratin, it is a basic protein which heterodimerizes with type I keratins to form hair and nails. The type II hair keratins are clustered in a region of chromosome 12q13 and are grouped into two distinct subfamilies based on structure similarity. One subfamily, consisting of KRTHB1, KRTHB3, and KRTHB6, is highly related. The other less-related subfamily includes KRTHB2, KRTHB4, and KRTHB5.

Synonyms:

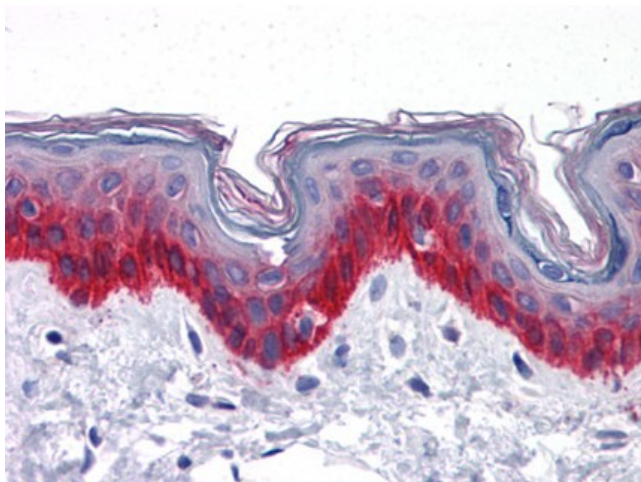
KRT81, KRTHB1, MLN137, Keratin hair basic 1, ghHk1, ghHb1, Keratin-81, K81, K2.9, MLN 137

Product images:

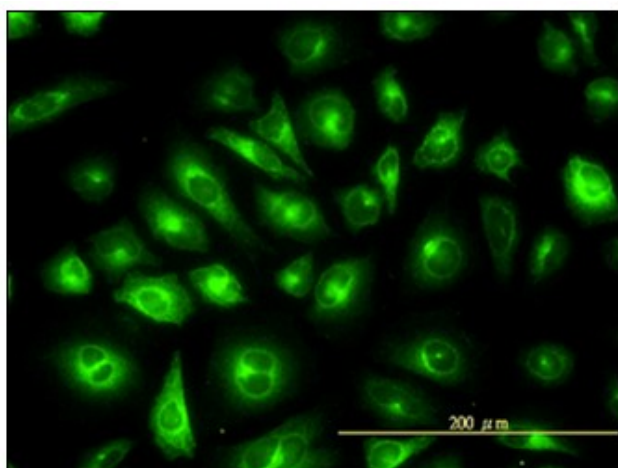
KRTHB1 monoclonal antibody clone 3B10-5B10
Western Blot analysis of KRTHB1 expression in HepG2.



Human Prostate: Formalin-Fixed, Paraffin-Embedded (FFPE)



Human Skin: Formalin-Fixed, Paraffin-Embedded (FFPE)



Immunofluorescence of monoclonal antibody to KRT81 on HeLa cell (antibody concentration 10 ug/ml).