

Product datasheet for **AM20903PU-N**

IDO1 (1-404) Mouse Monoclonal Antibody [Clone ID: 4D2]

Product data:

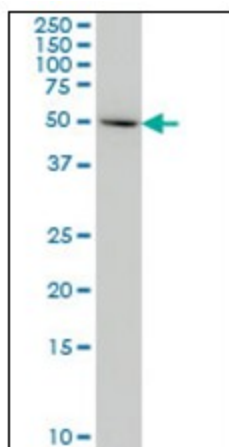
Product Type:	Primary Antibodies
Clone Name:	4D2
Applications:	ELISA, IHC, WB
Recommended Dilution:	ELISA. Immunohistochemistry on Paraffin Sections: 5 µg/ml. Western Blot: 1/500 - 1/1000.
Reactivity:	Human
Host:	Mouse
Isotype:	IgG2b
Clonality:	Monoclonal
Immunogen:	Recombinant protein, INDO (AAH27882, 1 a.a. ~ 404 a.a) full length recombinant protein with GST tag. MW of the GST tag alone is 26 KDa.
Specificity:	This antibody reacts to Indoleamine 2,3-Dioxygenase 1 (IDO1/INDO).
Formulation:	PBS, pH 7.4 State: Liquid purified Ig fraction
Concentration:	lot specific
Purification:	Protein A Chromatography
Conjugation:	Unconjugated
Storage:	Store the antibody at -20°C. Avoid repeated freezing and thawing.
Stability:	Shelf life: one year from despatch.
Gene Name:	indoleamine 2,3-dioxygenase 1
Database Link:	Entrez Gene 3620 Human P14902
Synonyms:	IDO1, IDO, INDO, Indoleamine 2,3-dioxygenase 1, EC=1.13.11.52, Indoleamine 2,3-dioxygenase, IDO, Indoleamine-pyrrole 2,3-dioxygenase
Protein Families:	Druggable Genome



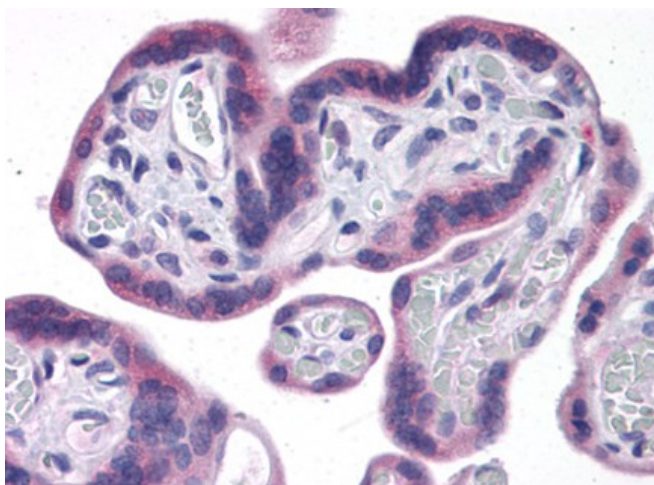
[View online »](#)

Protein Pathways: Metabolic pathways, Tryptophan metabolism

Product images:



INDO monoclonal antibody clone 4D2 Western Blot analysis of INDO expression in HeLa.



Human Placenta: Formalin-Fixed, Paraffin-Embedded (FFPE)